

To the Public Utility Commission of Texas

# ERCOT Wholesale Electricity Market Monthly Report

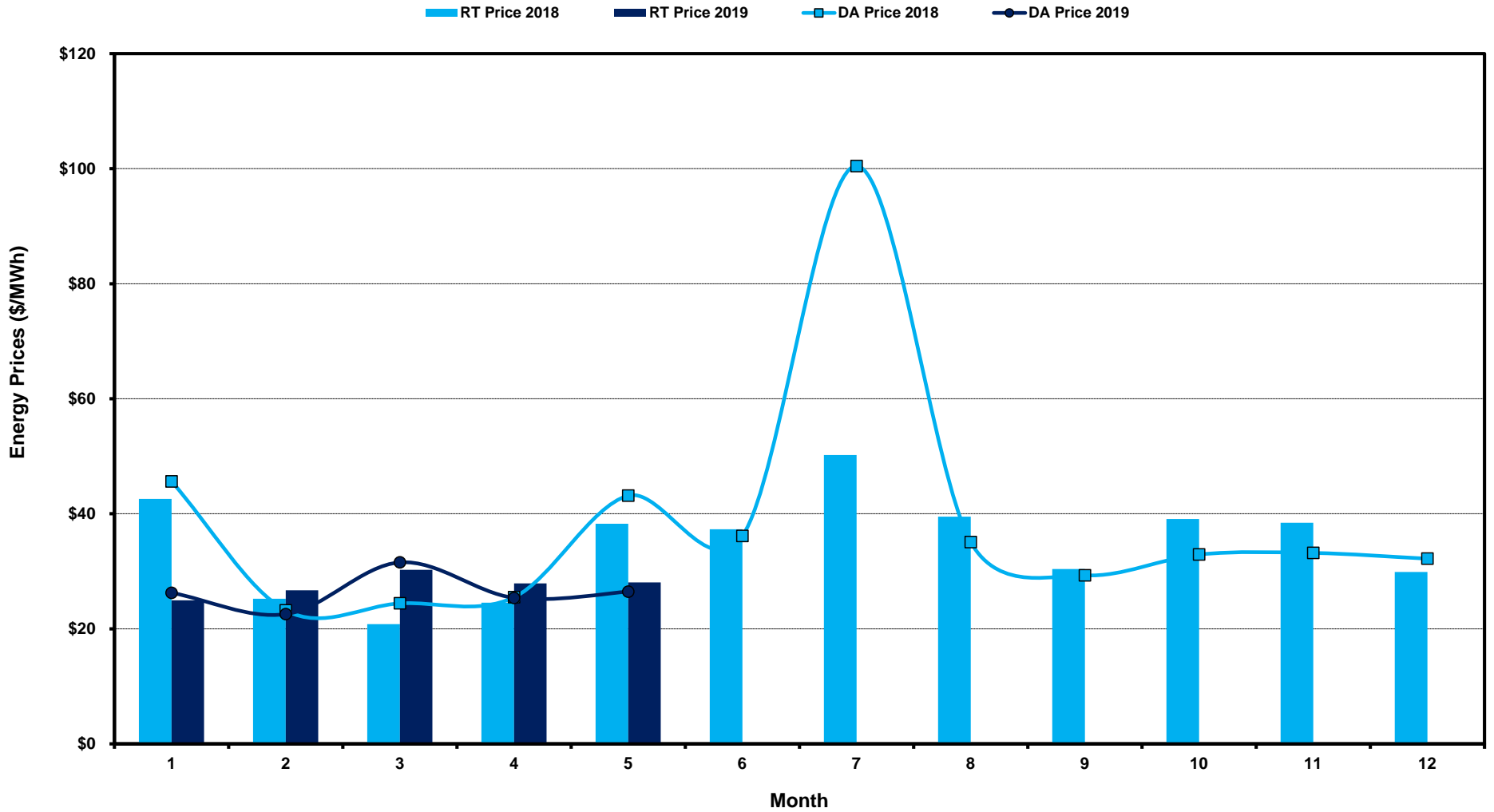
Tuesday, June 11, 2019

Potomac Economics, Ltd.  
Independent Market Monitor

1	ERCOT-wide Average Energy Prices DA vs. RT	<a href="#">chart</a>	<a href="#">table</a>
2	Load Zone Load Statistics	<a href="#">chart</a>	<a href="#">table</a>
3	Load Zone Monthly Average Energy Prices DA vs RT	<a href="#">chart</a>	<a href="#">table</a>
4	ERCOT-wide Monthly Implied Heat Rates DA vs RT	<a href="#">chart</a>	<a href="#">table</a>
5	Load Zone Monthly Implied Heat Rates DA vs RT	<a href="#">chart</a>	<a href="#">table</a>
6	Daily ORDC Reserve Adder Avg. Value and Duration	<a href="#">chart</a>	<a href="#">table</a>
7	Monthly Ancillary Services Required MW	<a href="#">chart</a>	<a href="#">table</a>
8	Hourly Average of Ancillary Services Required MW	<a href="#">chart</a>	<a href="#">table</a>
9	Monthly Average Ancillary Services Price	<a href="#">chart</a>	<a href="#">table</a>
10	Monthly Average A/S Cost per MWh Load	<a href="#">chart</a>	<a href="#">table</a>
11	Ercot-wide Cumulative Peaker Net Margin	<a href="#">chart</a>	<a href="#">table</a>
12	DA vs. RT Load Forecast Error by Hour Ending	<a href="#">chart</a>	<a href="#">table</a>
13	Monthly Average of Wind Generation by Hour Ending	<a href="#">chart</a>	<a href="#">table</a>
14	RT Constraint Rankings		<a href="#">table</a>
	- Top 10 Constraints by Total Congestion Value	<a href="#">chart</a>	
	- Top 10 Constraints by Binding Frequency	<a href="#">chart</a>	
15	DA Constraint Rankings		<a href="#">table</a>
	- Top 10 Constraints by Total Congestion Value	<a href="#">chart</a>	
	- Top 10 Constraints by Binding Frequency	<a href="#">chart</a>	
16	CRR Pairs by Monthly Auction Value Rankings		<a href="#">table</a>
	- Top 10 PTP Obligations by Total Transaction Value	<a href="#">chart</a>	
	- Top 10 PTP Options by Total Transaction Value	<a href="#">chart</a>	

# ERCOT-wide Average Energy Prices DA vs RT

(avg. DA & RT SPPs weighted by Real Time Settlement Loads)



[Home <<](#)

[previous <<](#)

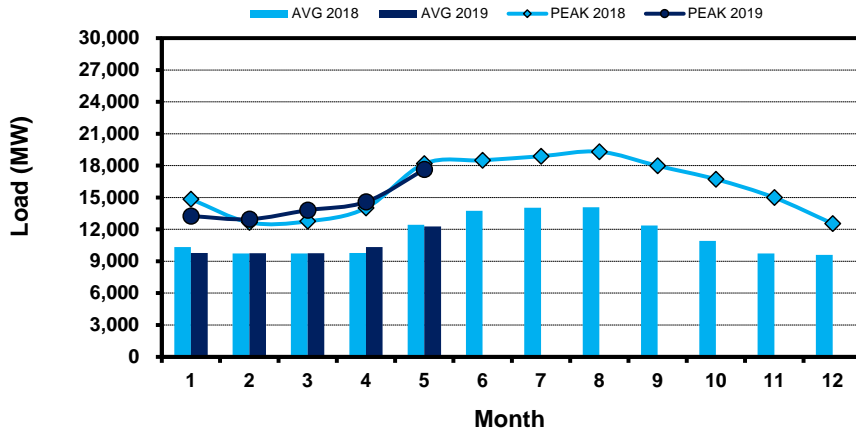
[next >>](#)

[data](#)

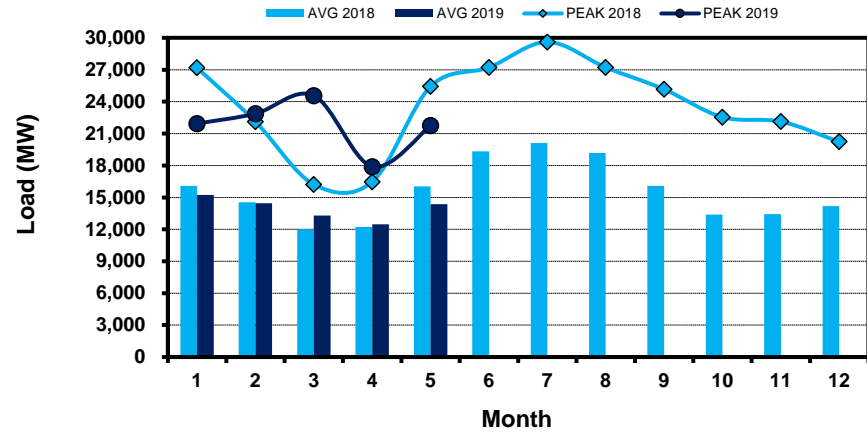
# Load Zone Load Statistics

(Nodal load zone made comparable to zonal system Load Zone definitions\*)

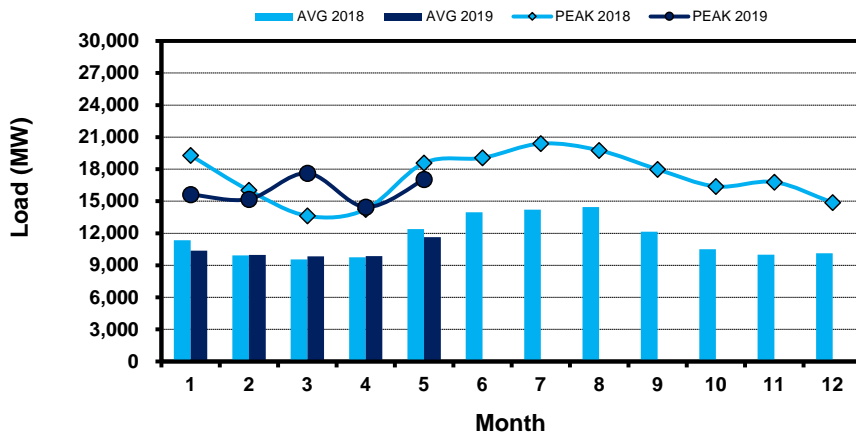
### Houston Zone



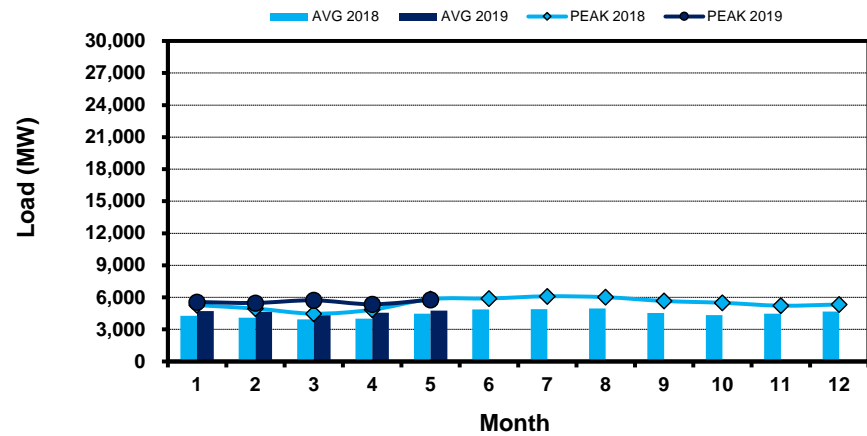
### North Zone



### South Zone



### West Zone



[Home <<](#)

[previous <<](#)

[next >>](#)

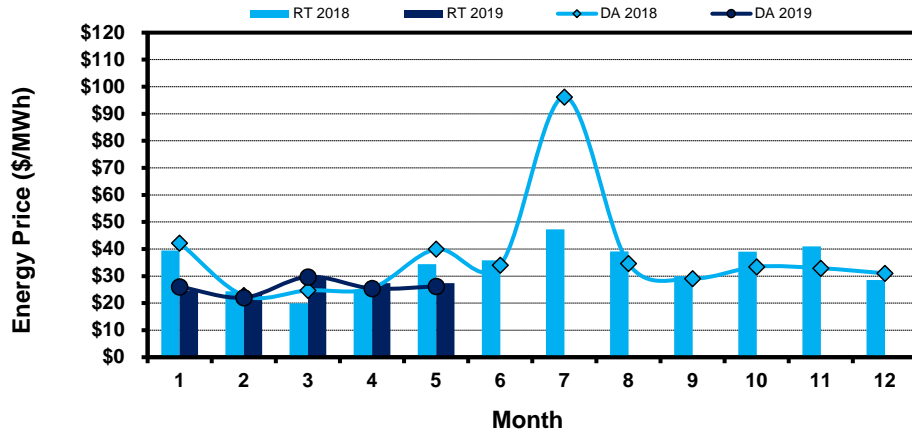
[data](#)

**Note:** \* Zonal load zone definition vs. Nodal comparable load zone definition: LZ\_Houston=LZ\_Houston; LZ\_West=LZ\_West; LZ\_North=(LZ\_North,LZ\_RAYBN); LZ\_South=(LZ\_South,LZ\_CPS,LZ\_AEN,LZ\_LCRA)

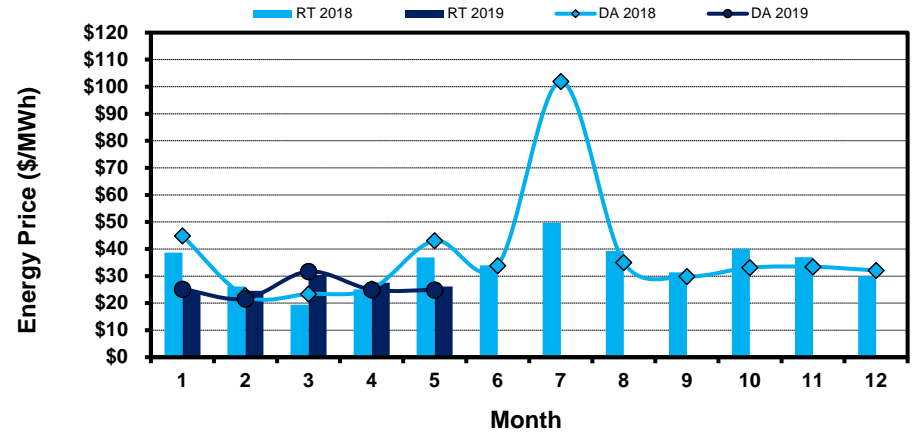
# Load Zone Monthly Average Energy Price DA vs RT

(avg. DA & RT SPPs weighted by Real Time Settlement Loads)  
 (Nodal load zone made comparable to zonal system Load Zone definitions\*)

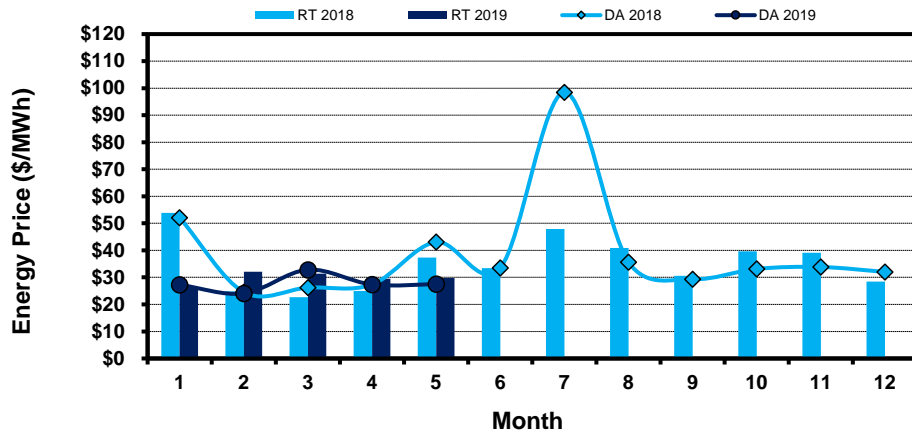
### Houston Zone



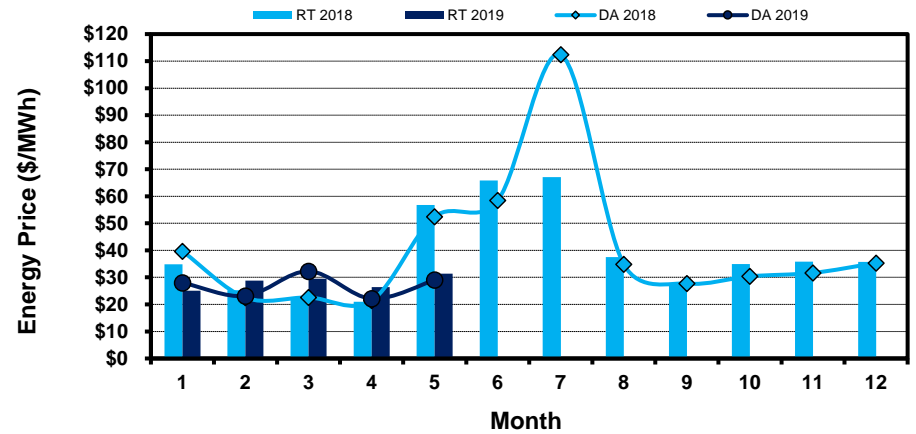
### North Zone



### South Zone



### West Zone



[Home <<](#)

[previous <<](#)

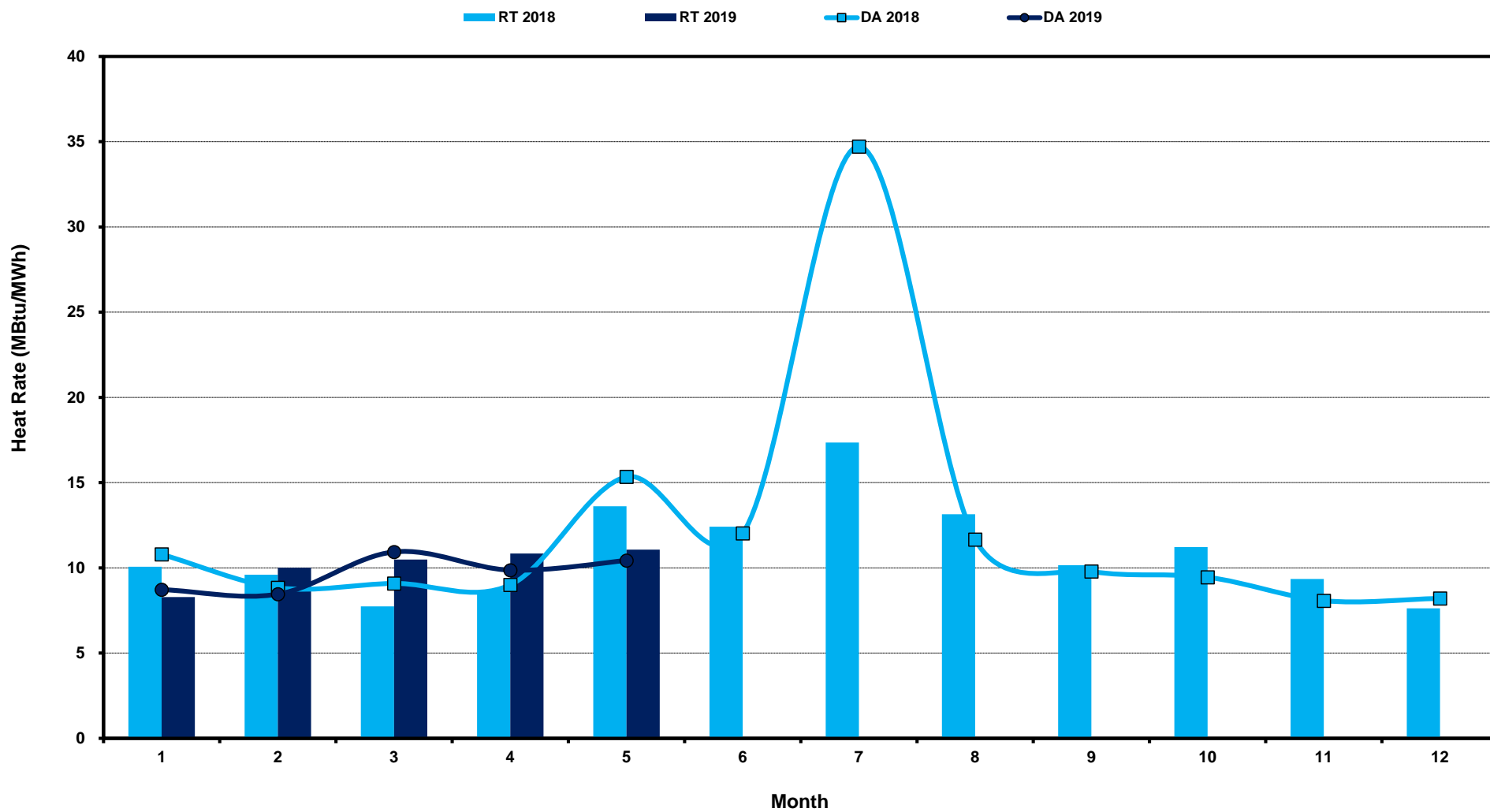
[next >>](#)

[data](#)

**Note:** \* Zonal load zone definition vs. Nodal comparable load zone definition: LZ\_Houston=LZ\_Houston; LZ\_West=LZ\_West; LZ\_North=(LZ\_North,LZ\_RAYBN); LZ\_South=(LZ\_South,LZ\_CPS,LZ\_AEN,LZ\_LCRA)

# ERCOT-wide Monthly Implied Heat Rate DA vs RT

(avg. heat rates weighted by Real Time Settlement Loads)



[Home <<](#)

[previous <<](#)

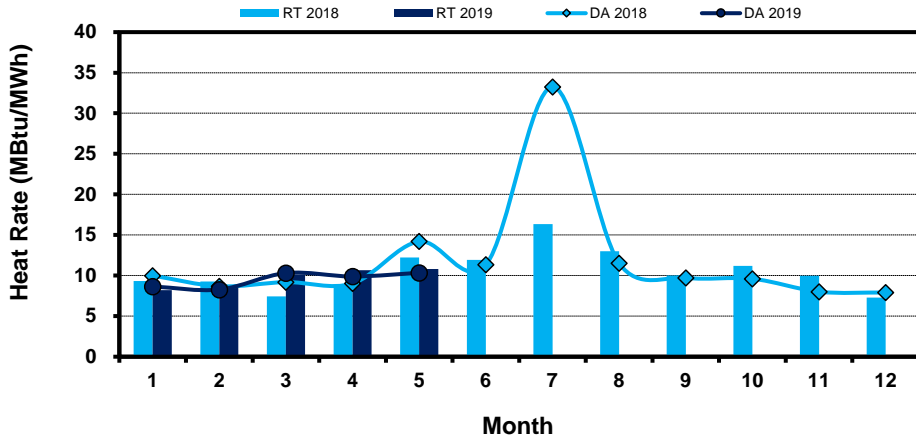
[next >>](#)

[data](#)

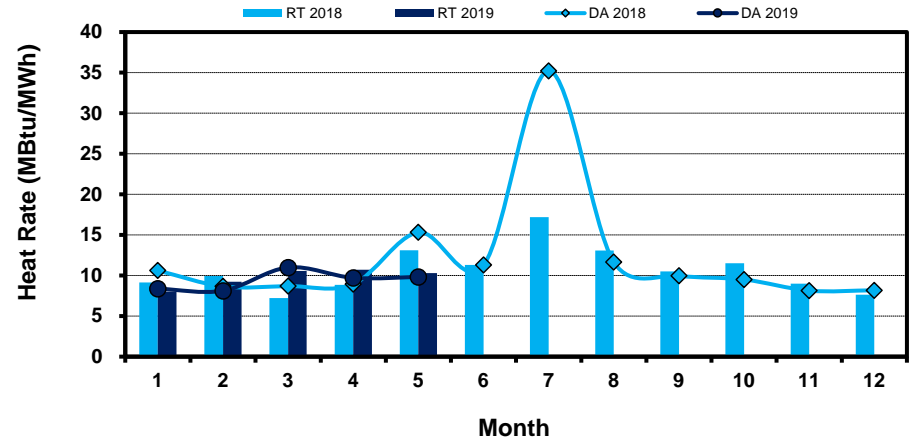
# Load Zone Monthly Implied Heat Rate DA vs RT

(avg. heat rates weighted by Real Time Settlement Loads)  
 (Nodal load zone made comparable to zonal system Load Zone definitions\*)

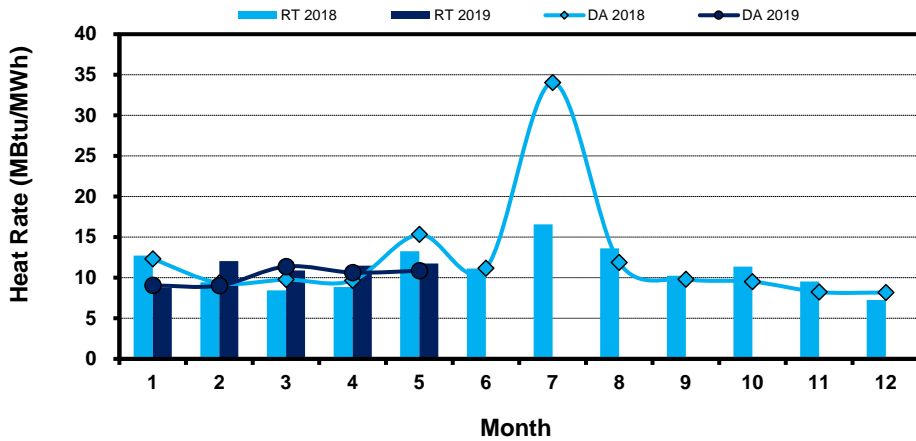
### Houston Zone



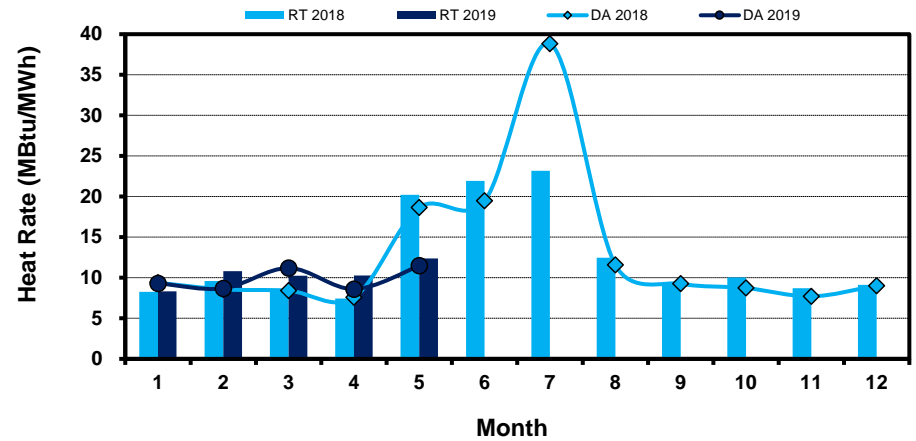
### North Zone



### South Zone



### West Zone



[Home <<](#)

[previous <<](#)

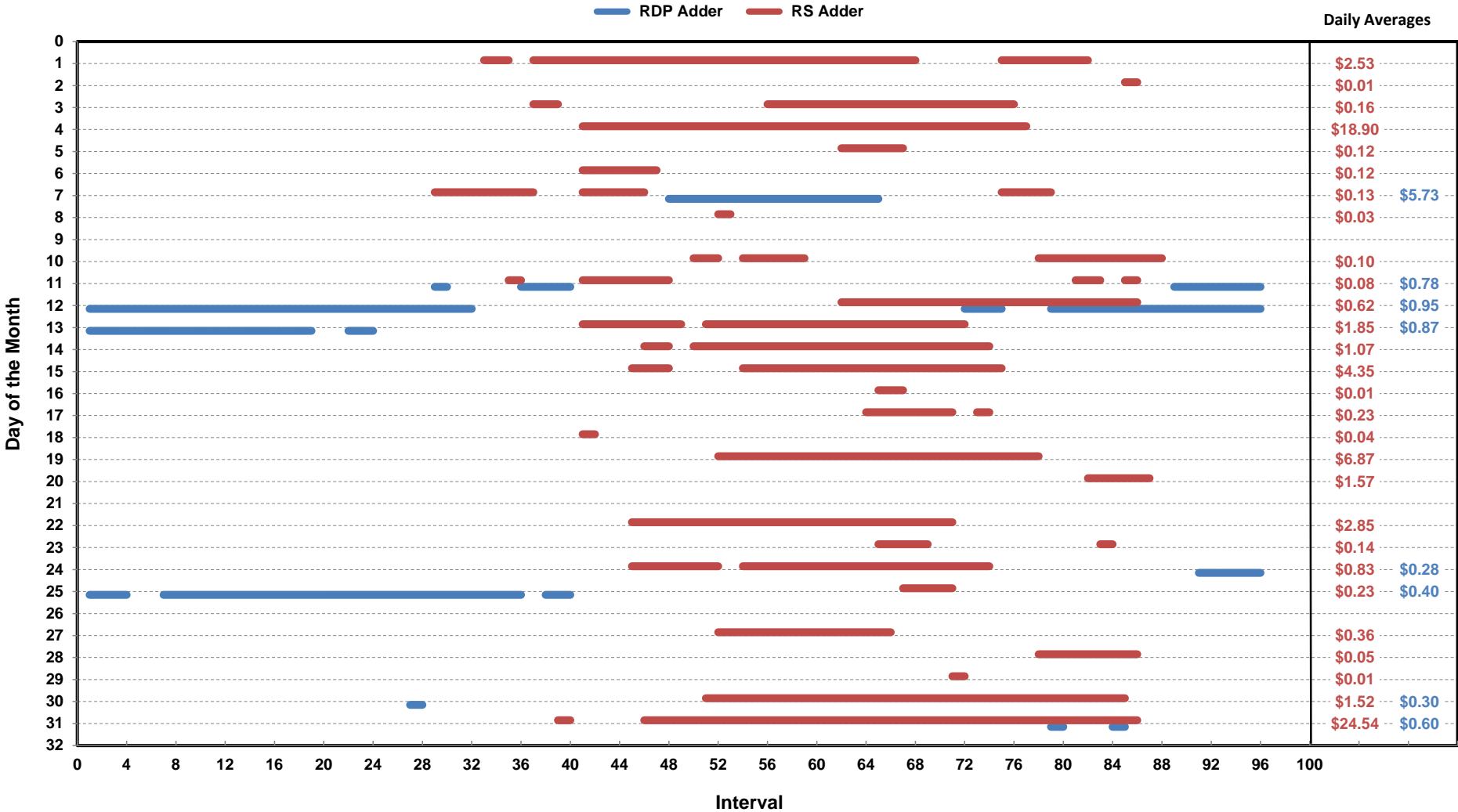
[next >>](#)

[data](#)

**Note:** \* Zonal load zone definition vs. Nodal comparable load zone definition: LZ\_Houston=LZ\_Houston; LZ\_West=LZ\_West; LZ\_North=(LZ\_North,LZ\_RAYBN); LZ\_South=(LZ\_South,LZ\_CPS,LZ\_AEN,LZ\_LCRA)

# Daily ORDC Adders Average Values and Interval Duration

## May-2019



[Home <<](#)

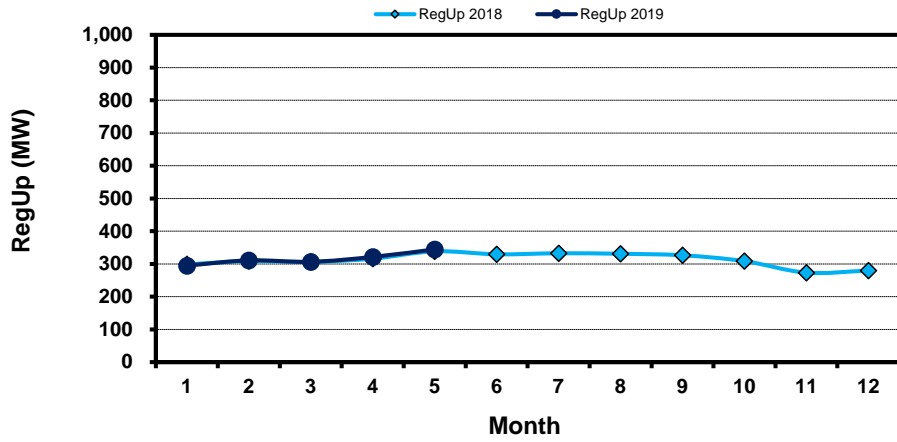
[previous <<](#)

[next >>](#)

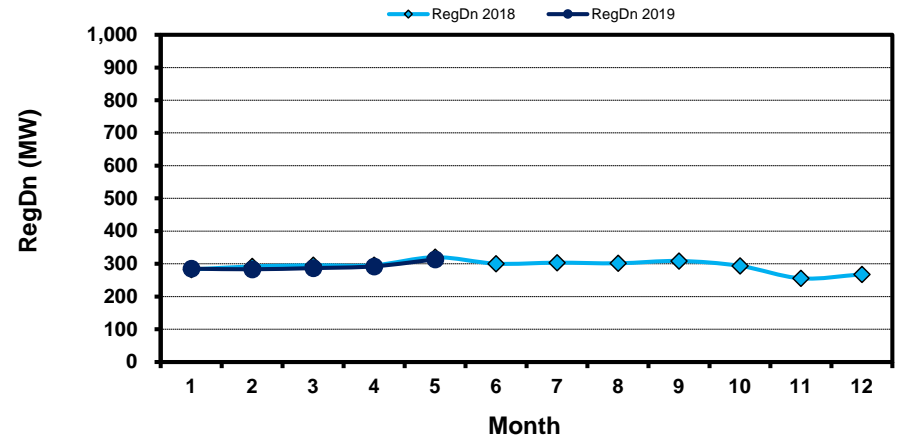
[data](#)

# Monthly Average of Ancillary Services Required MW

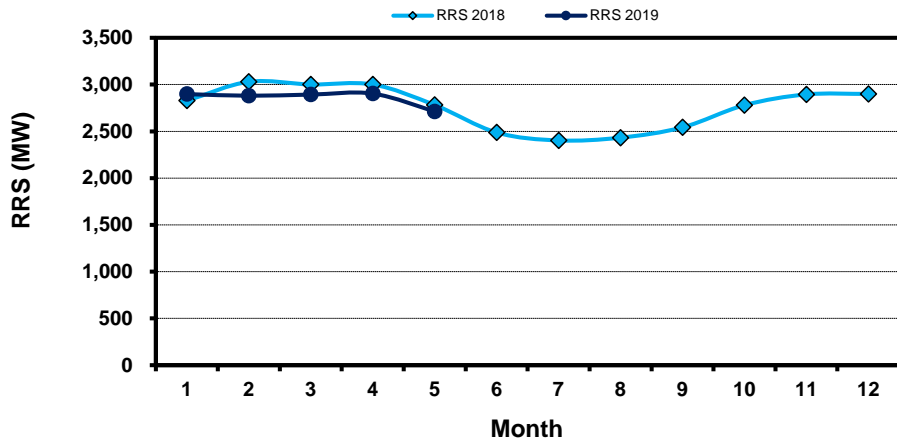
## Regulation Up



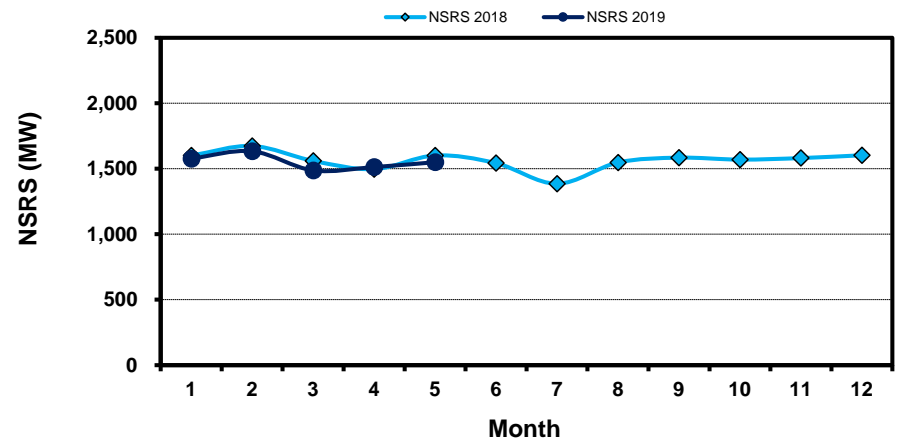
## Regulation Down



## Responsive Reserve



## Non-Spin Reserve



[Home <<](#)

[previous <<](#)

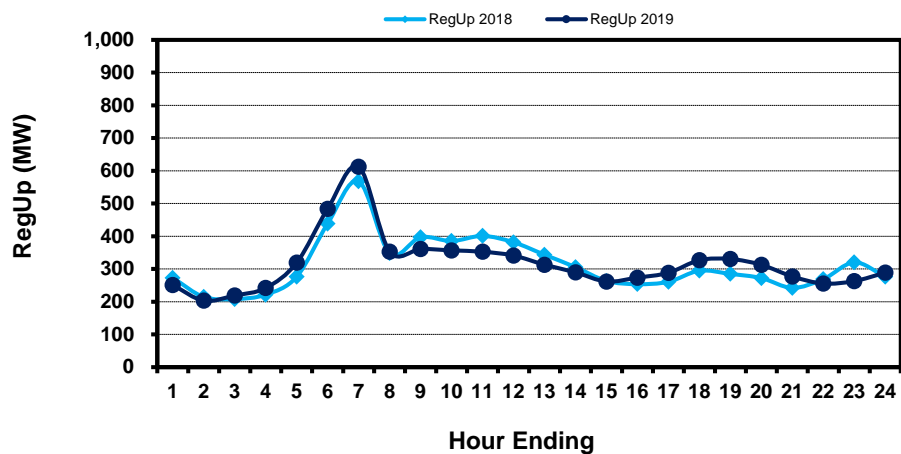
[next >>](#)

[data](#)

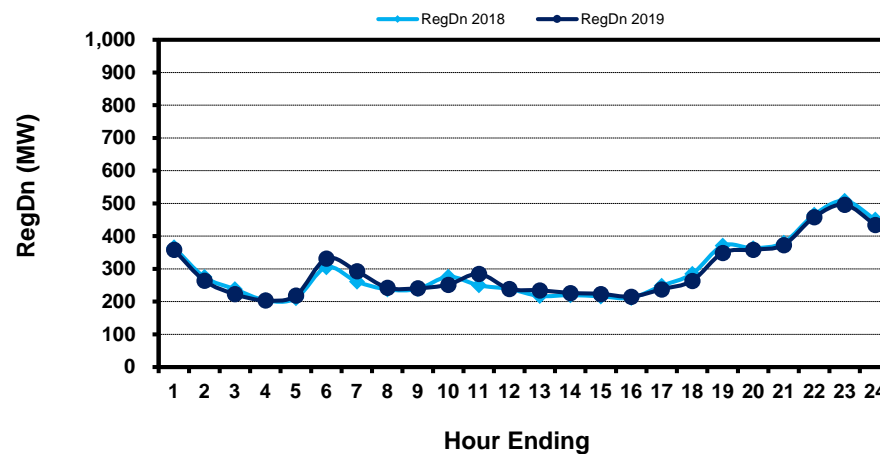


# Hourly Average of Ancillary Services Required MW

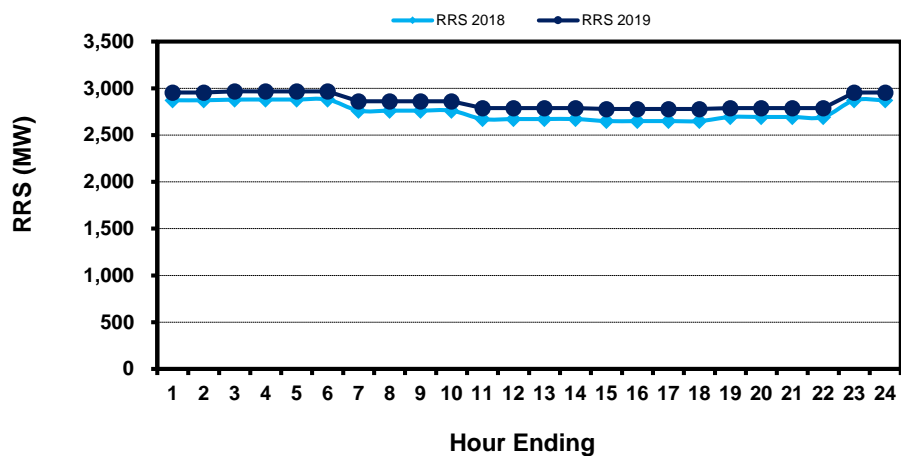
## Regulation Up



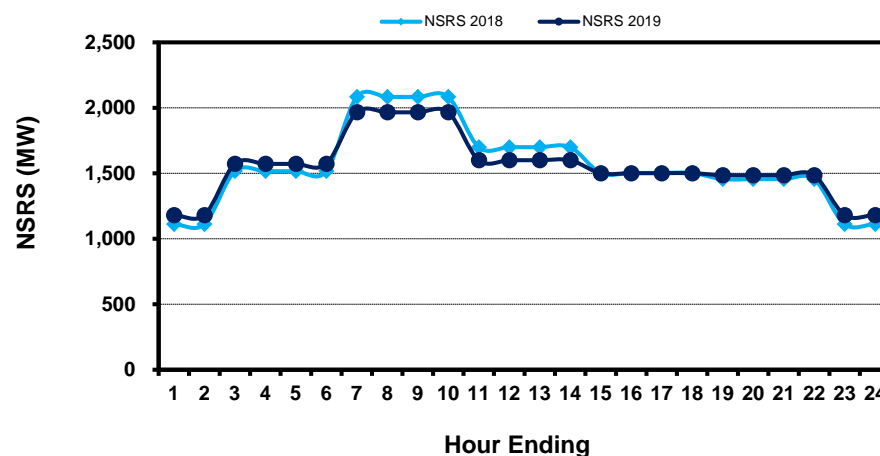
## Regulation Down



## Responsive Reserve



## Non-Spin Reserve



[Home <<](#)

[previous <<](#)

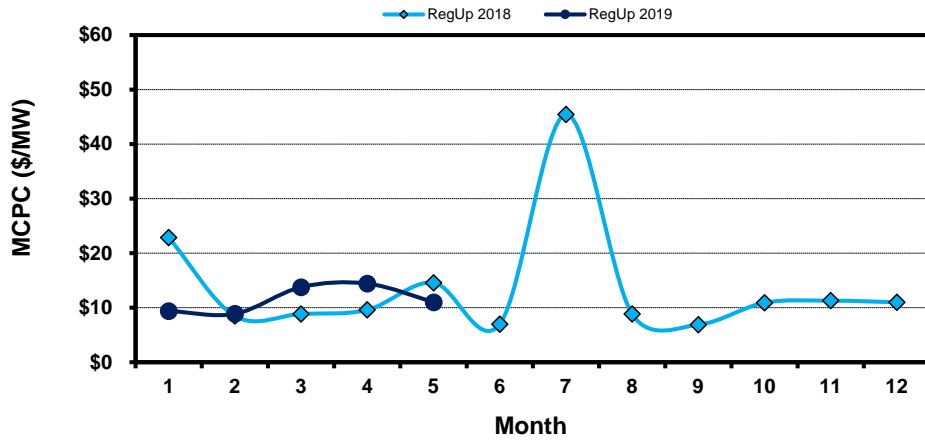
[next >>](#)

[data](#)

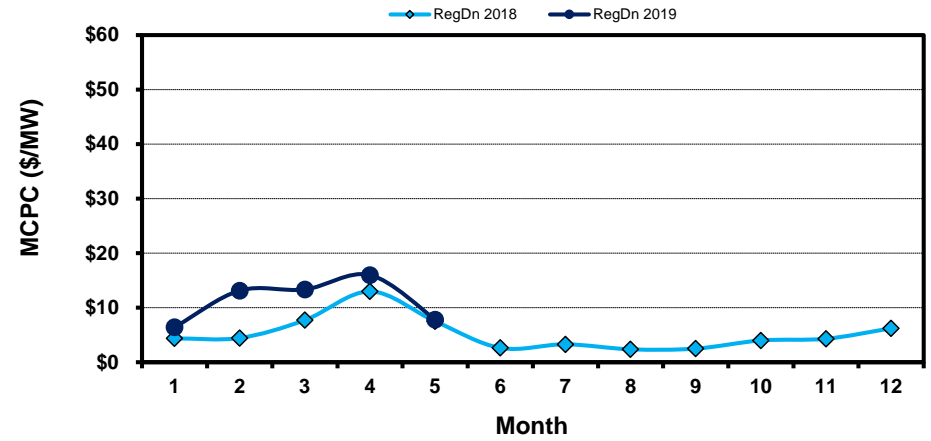
# Monthly Average Ancillary Services Price

(weighted by A/S Quantities Required)

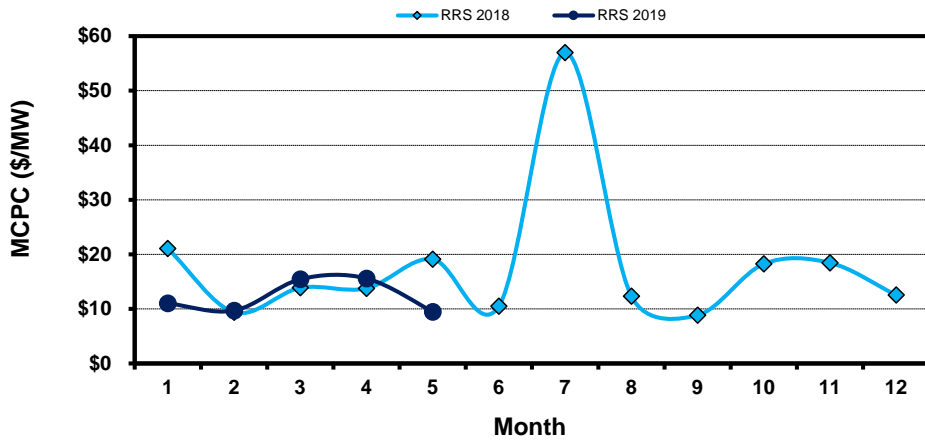
### Regulation Up



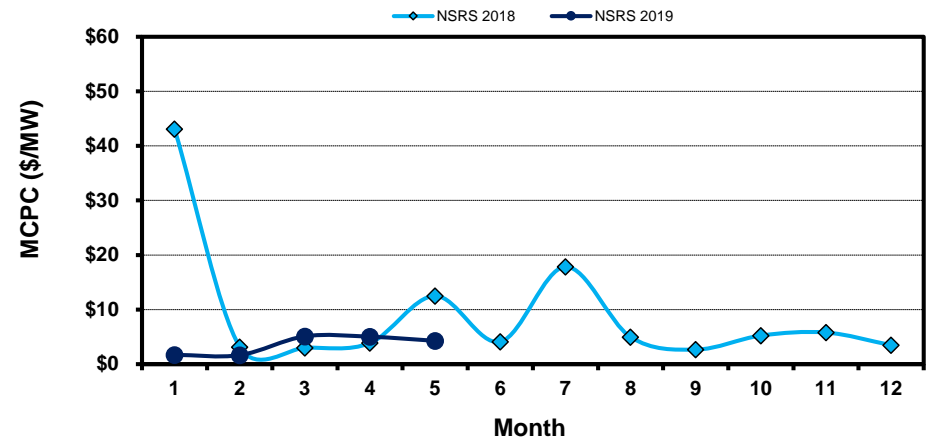
### Regulation Down



### Responsive Reserve



### Non-Spin Reserve



[Home <<](#)

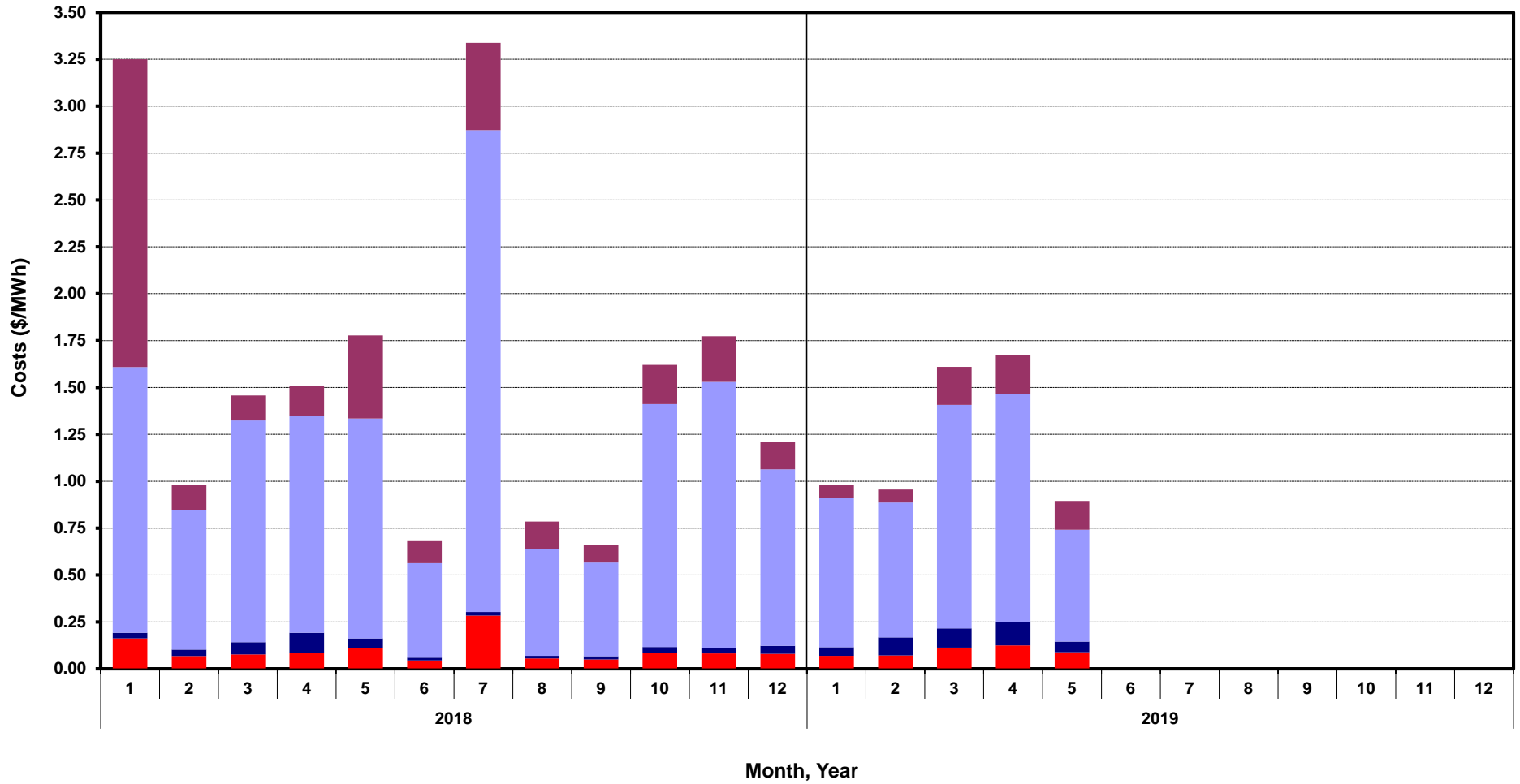
[previous <<](#)

[next >>](#)

[data](#)

# Monthly Average A/S Cost per MWh Load

RegUp RegDn RRS NonSpin



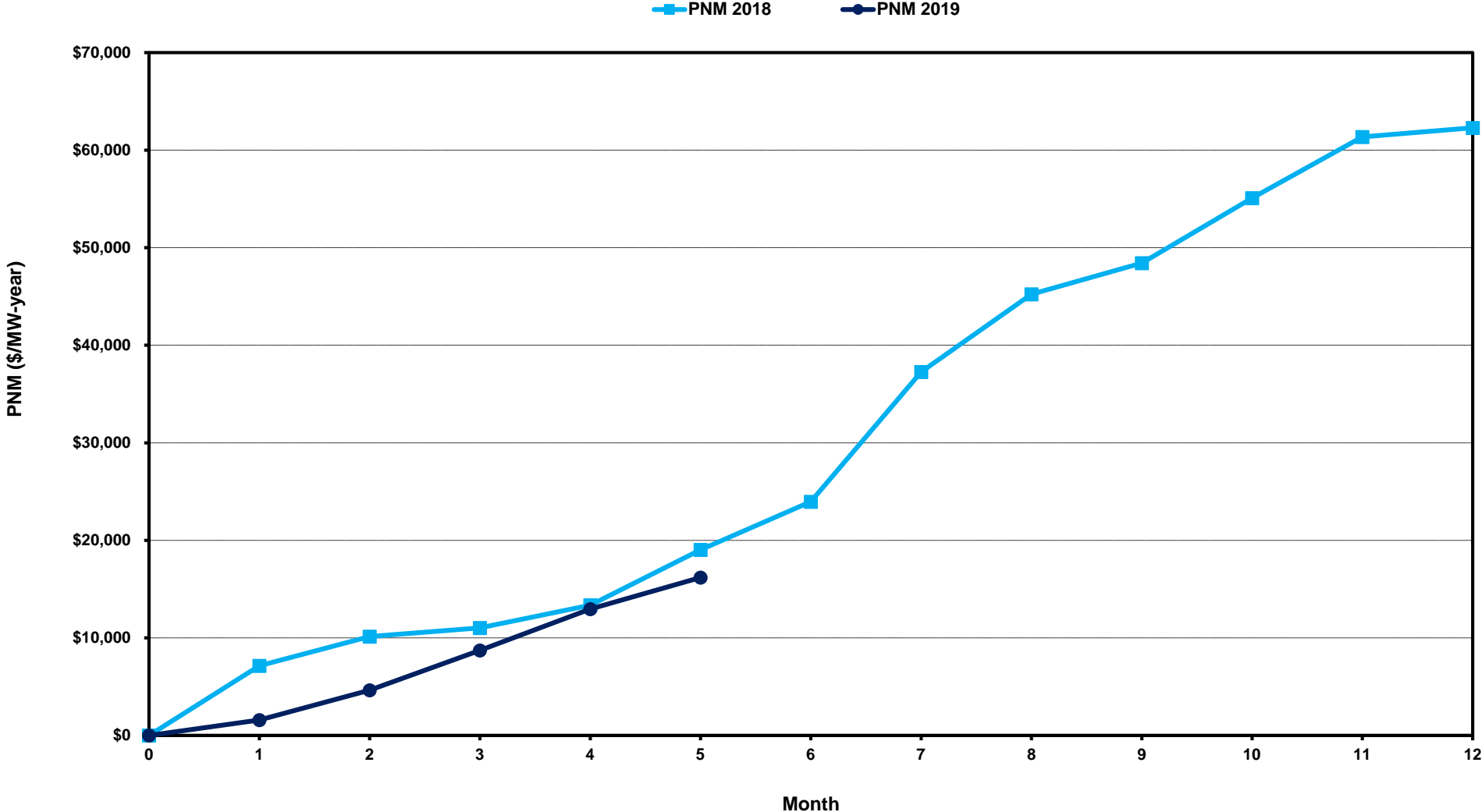
[Home <<](#)

[previous <<](#)

[next >>](#)

[data](#)

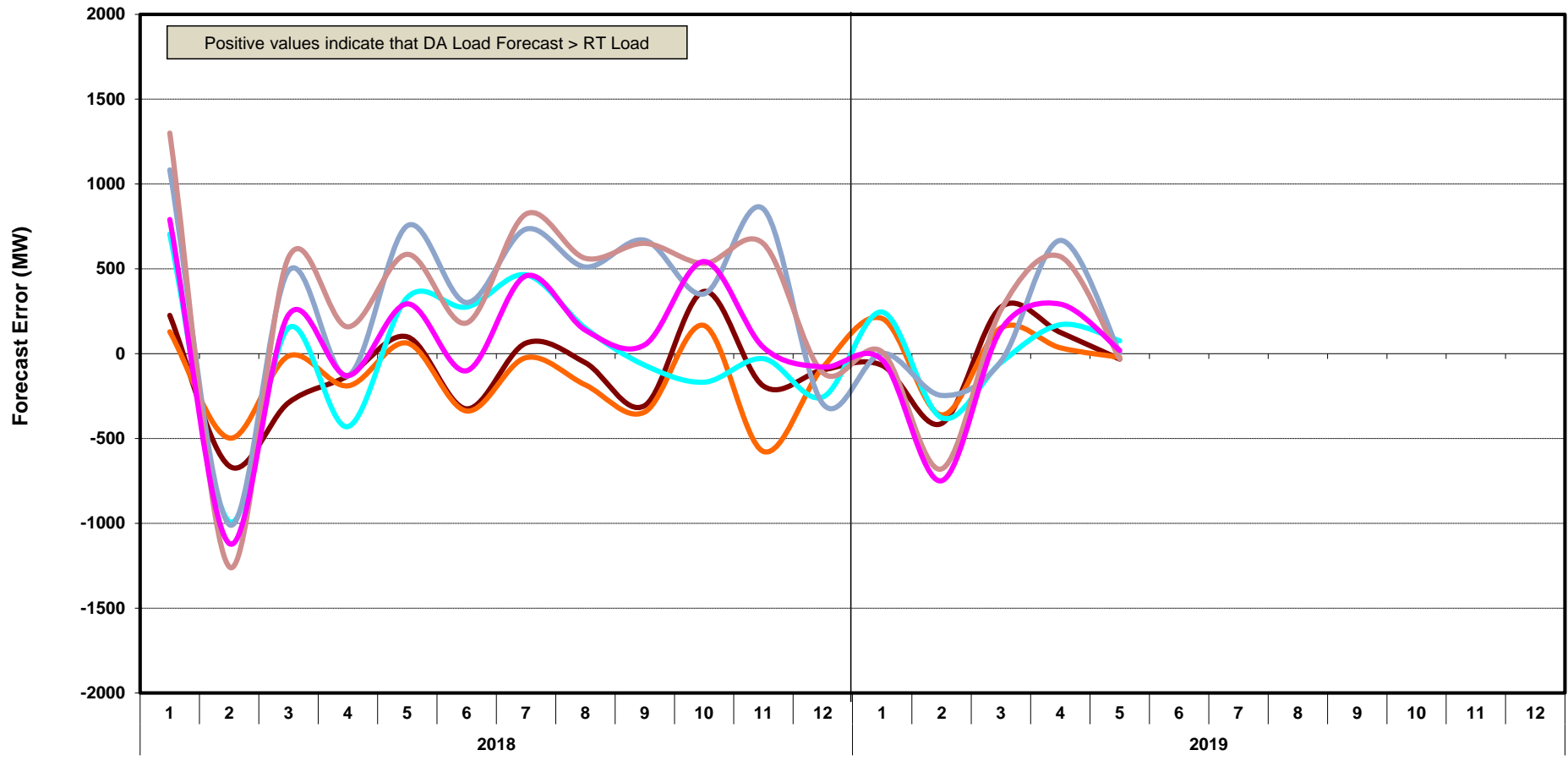
# ERCOT-wide Cumulative Peaker Net Margin



[Home <<](#)      [previous <<](#)      [next >>](#)  
[data](#)

# DA vs. RT Load Forecast Error by Hour Ending

HE\_1\_4   HE\_5\_8   HE\_9\_12   HE\_13\_16   HE\_17\_20   HE\_21\_24



Month, Year

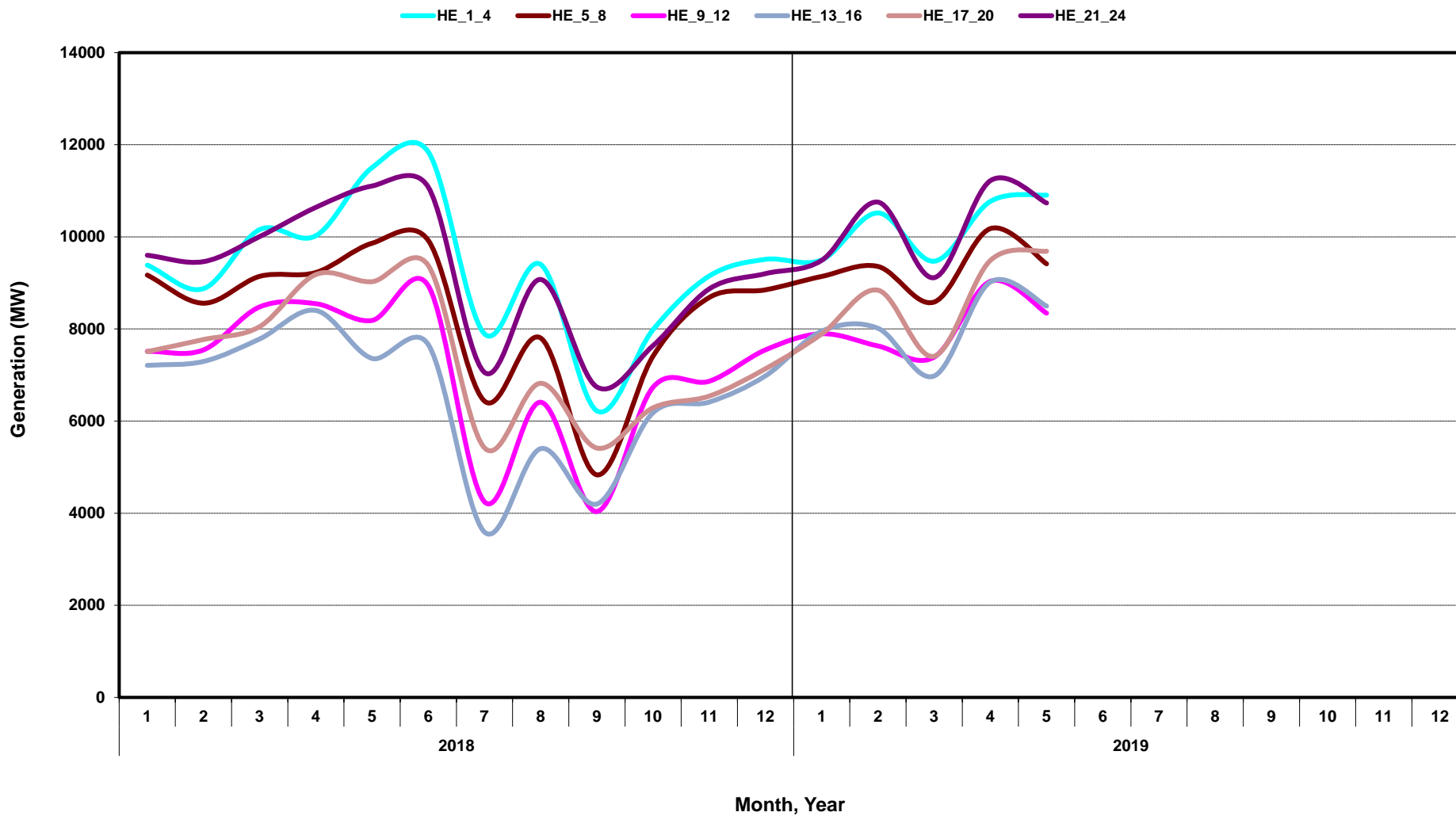
[Home <<](#)

[previous <<](#)

[next >>](#)

[data](#)

# Monthly Average of Wind Generation by Hour Ending



[Home <<](#)

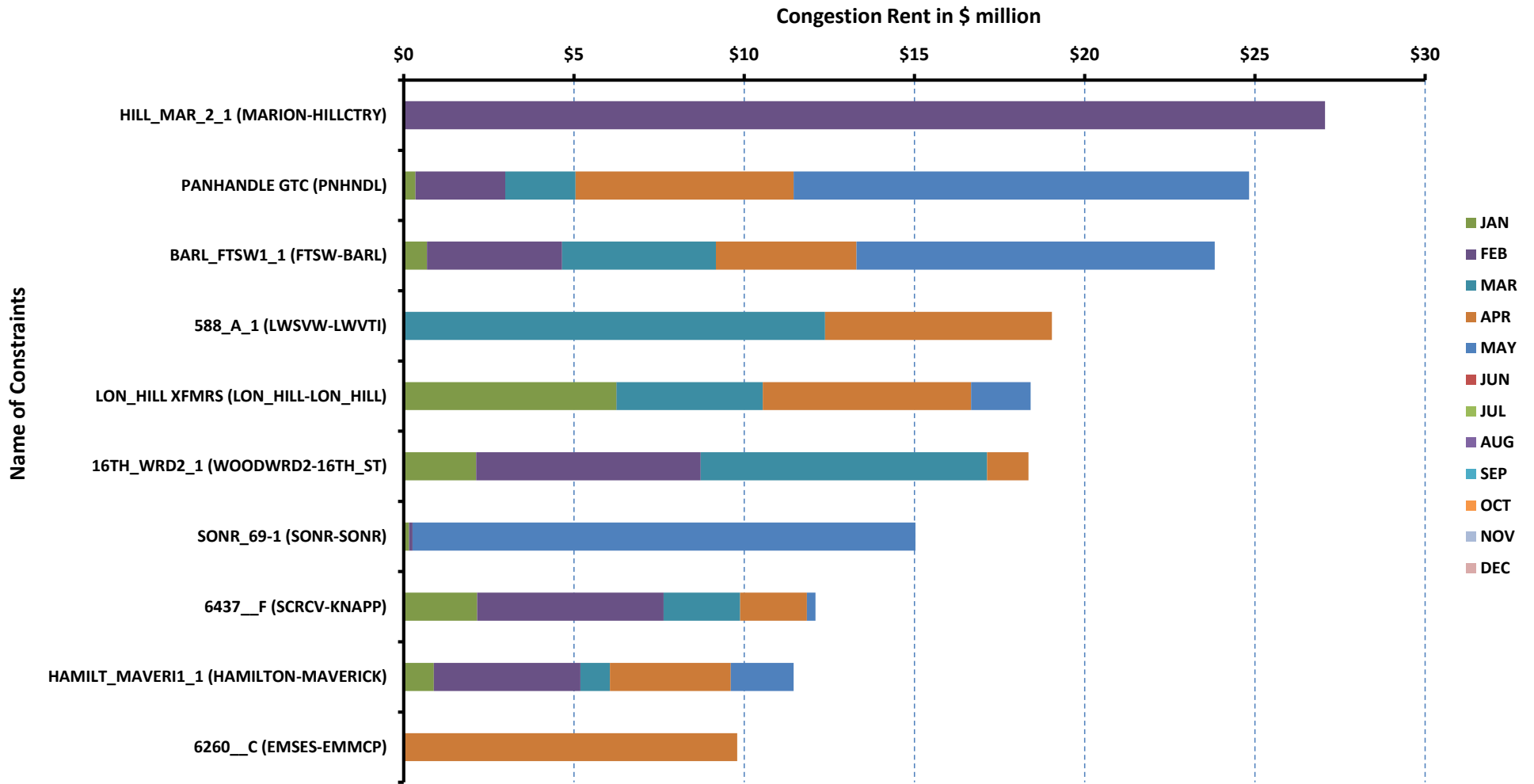
[previous <<](#)

[next >>](#)

[data](#)

# RT Congestion Constraint Rankings - 1

## Top 10 Constraints by Total Congestion Value - 2019



[Home <<](#)

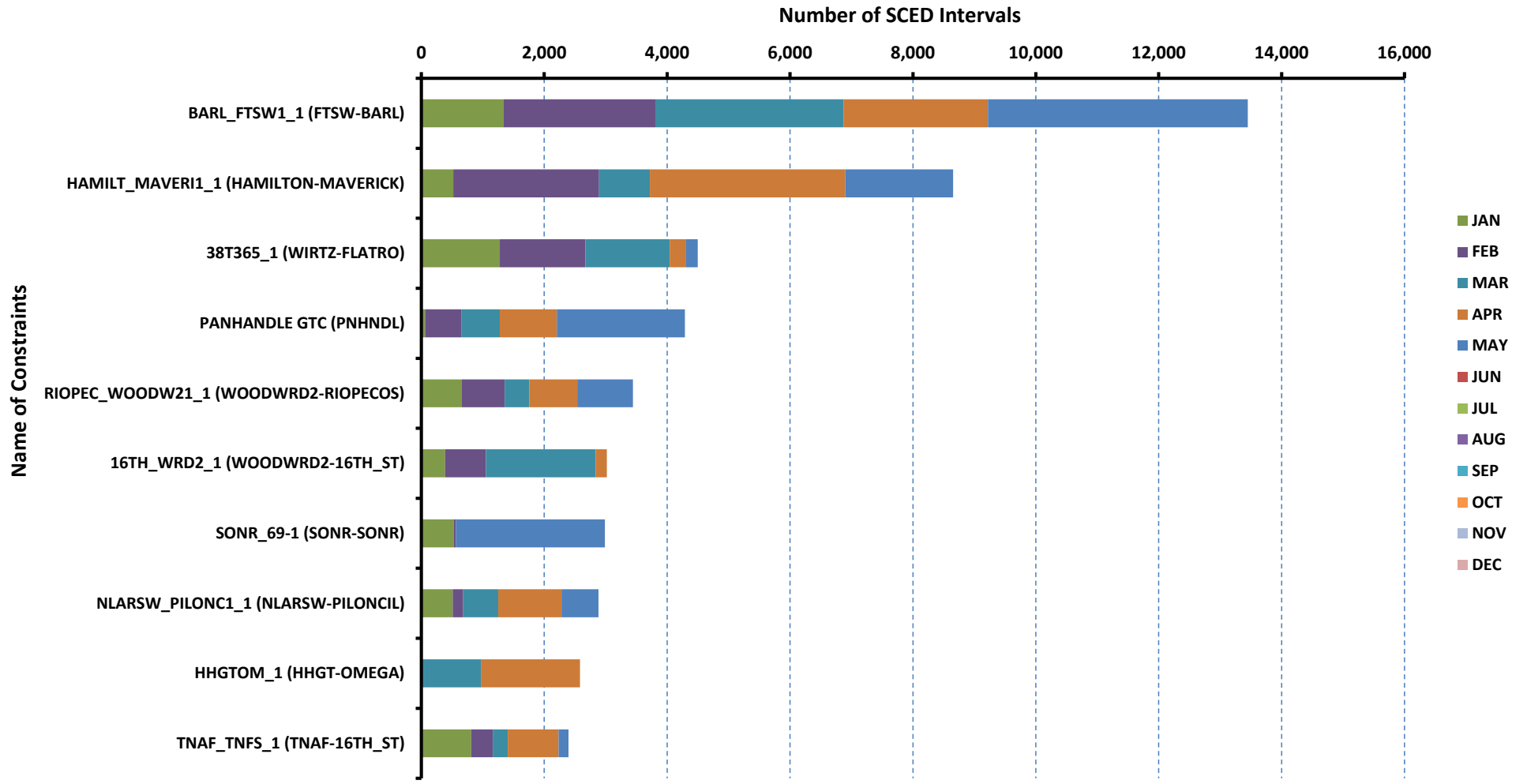
[previous <<](#)

[next >>](#)

[data](#)

# RT Congestion Constraint Rankings - 2

## Top 10 Constraints by Binding Frequency - 2019



[Home <<](#)

[previous <<](#)

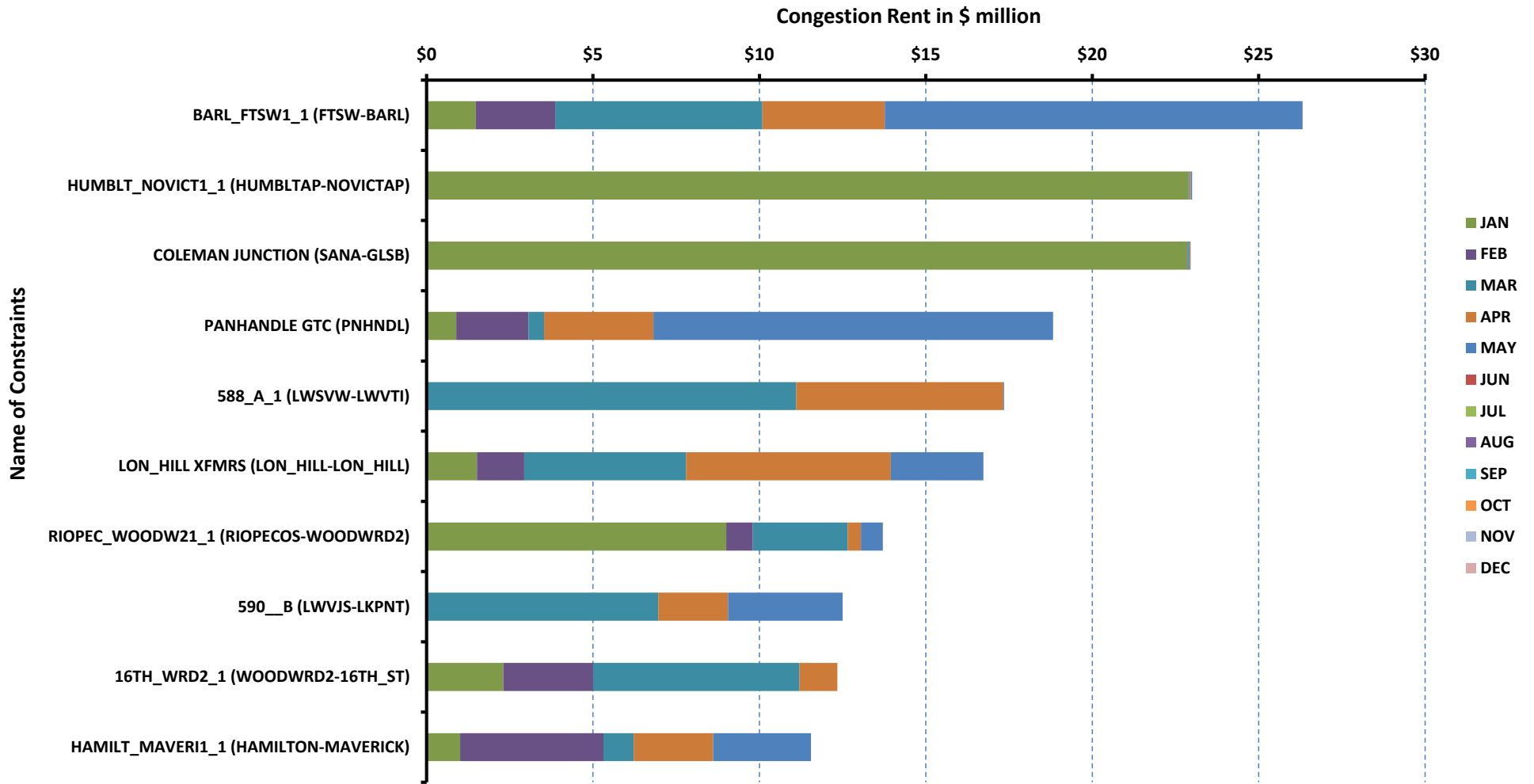
[next >>](#)

[data](#)



# DA Congestion Constraint Rankings - 1

## Top 10 Constraints by Total Congestion Value - 2019



[Home <<](#)

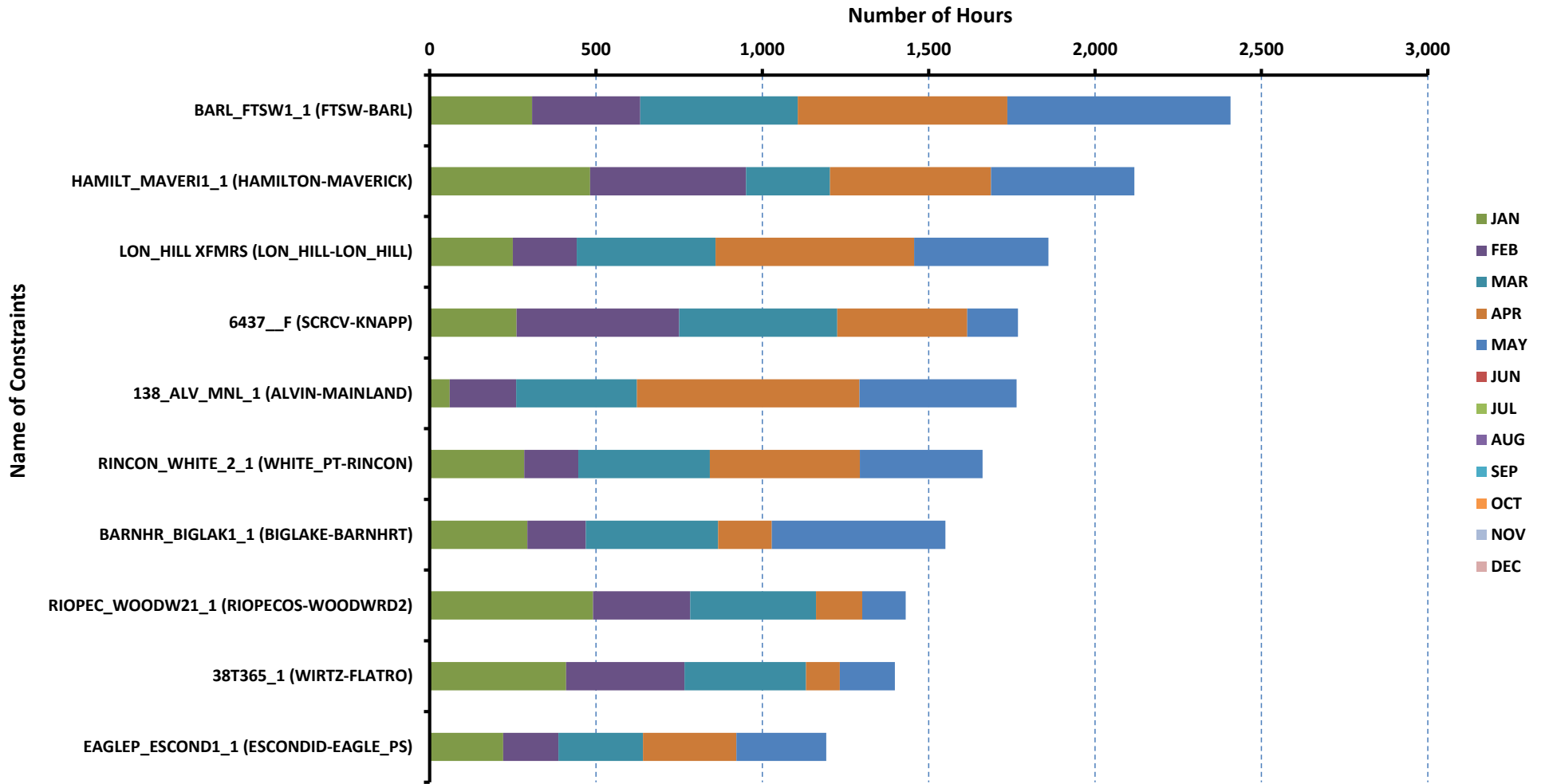
[previous <<](#)

[next >>](#)

[data](#)

# DA Congestion Constraint Rankings - 2

## Top 10 Constraints by Binding Frequency - 2019



[Home <<](#)

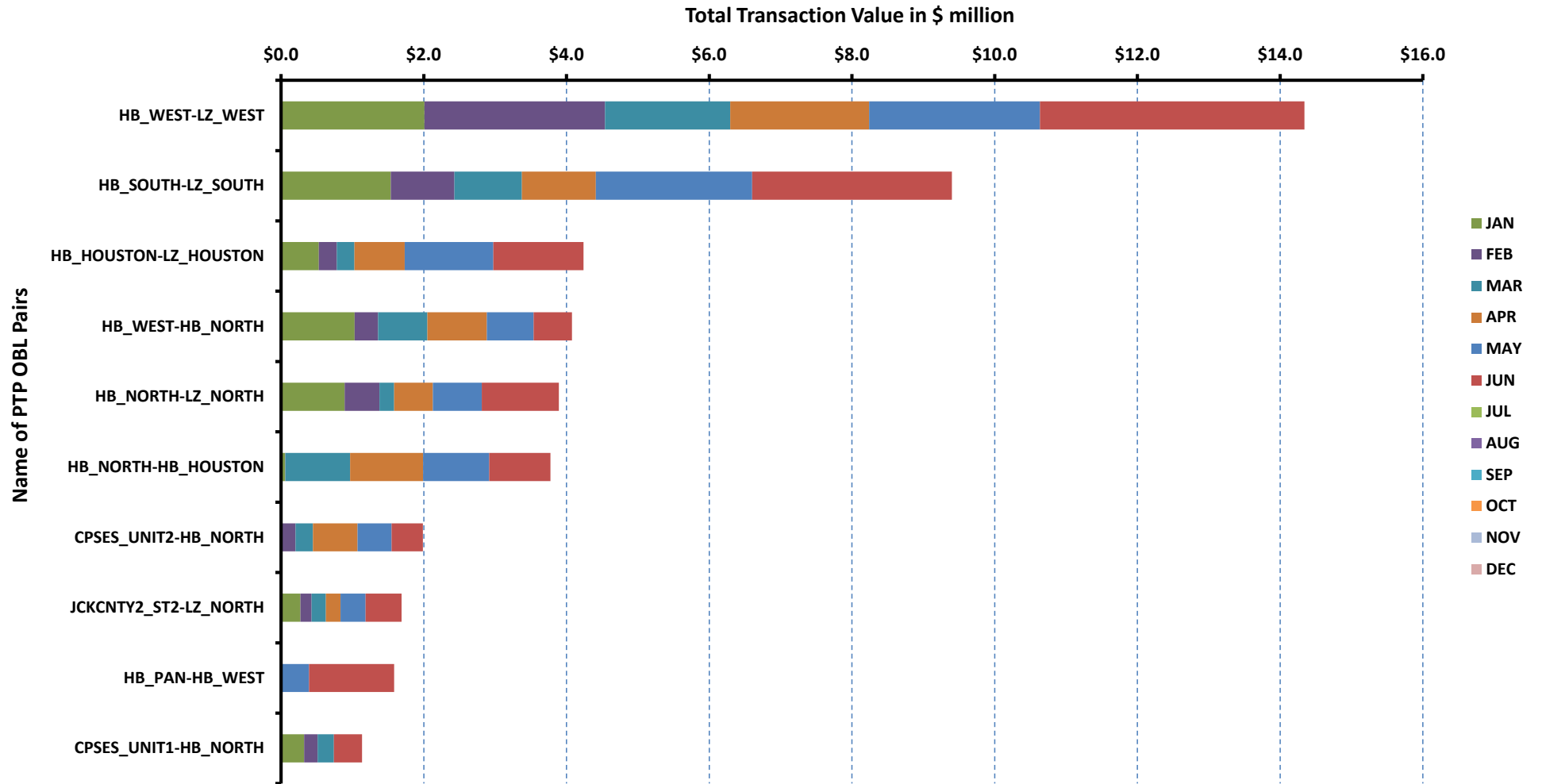
[previous <<](#)

[next >>](#)

[data](#)

# Top 10 CRR Pairs Ranked by Monthly Auction Values - 1

## Top 10 PTP Obligations by Total Transaction Value - 2019



[Home <<](#)

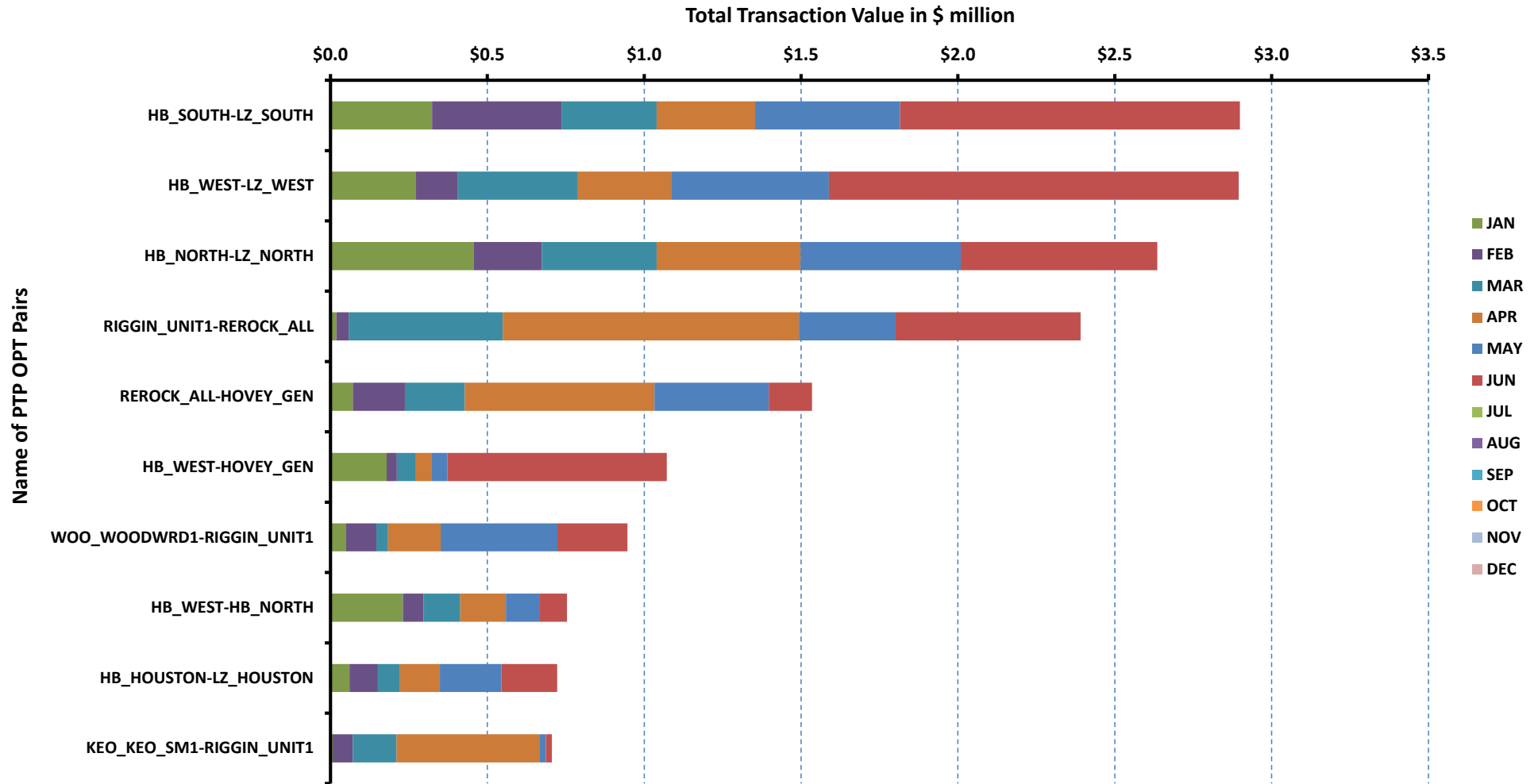
[previous <<](#)

[next >>](#)

[data](#)

# Top 10 CRR Pairs Ranked by Monthly Auction Values - 2

## Top 10 PTP Options by Total Transaction Value - 2019



[Home <<](#)

[previous <<](#)

[next >>](#)

[data](#)

ERCOT-wide Avg. Energy Price - DA vs. RT			
year	month	dam_spp	rtm_spp
2018	1	\$ 45.63	\$ 42.56
	2	\$ 23.21	\$ 25.24
	3	\$ 24.42	\$ 20.80
	4	\$ 25.49	\$ 24.54
	5	\$ 43.15	\$ 38.28
	6	\$ 36.15	\$ 37.29
	7	\$ 100.46	\$ 50.22
	8	\$ 35.08	\$ 39.51
	9	\$ 29.31	\$ 30.40
	10	\$ 32.92	\$ 39.09
	11	\$ 33.19	\$ 38.44
	12	\$ 32.19	\$ 29.90
2019	1	\$ 26.27	\$ 24.96
	2	\$ 22.55	\$ 26.69
	3	\$ 31.55	\$ 30.25
	4	\$ 25.38	\$ 27.90
	5	\$ 26.46	\$ 28.06
	6	\$ -	\$ -
	7	\$ -	\$ -
	8	\$ -	\$ -
	9	\$ -	\$ -
	10	\$ -	\$ -
	11	\$ -	\$ -
	12	\$ -	\$ -

[Home <<](#)

[previous <<](#)

[next >>](#)

[chart](#)

Load Zone Load Statistics											
year	month	loadPEAK_Houston	loadPEAK_North	loadPEAK_South	loadPEAK_West	loadAVG_Houston	loadAVG_North	loadAVG_South	loadAVG_West		
2018	1	14,841	27,183	19,284	5,270	10,346	16,082	11,354	4,263		
	2	12,660	22,124	16,019	4,952	9,740	14,553	9,933	4,101		
	3	12,755	16,224	13,632	4,474	9,738	12,000	9,549	3,934		
	4	14,008	16,467	14,236	4,842	9,773	12,219	9,759	4,009		
	5	18,179	25,425	18,585	5,840	12,436	16,042	12,382	4,477		
	6	18,501	27,219	19,059	5,898	13,746	19,328	13,975	4,872		
	7	18,885	29,606	20,395	6,101	14,046	20,118	14,207	4,890		
	8	19,311	27,221	19,761	6,017	14,083	19,181	14,463	4,965		
	9	17,980	25,161	17,984	5,661	12,364	16,072	12,140	4,532		
	10	16,718	22,540	16,381	5,492	10,919	13,391	10,514	4,336		
	11	14,989	22,127	16,793	5,224	9,739	13,438	9,986	4,462		
	12	12,545	20,233	14,873	5,332	9,600	14,191	10,136	4,682		
2019	1	13,256	21,937	15,623	5,564	9,784	15,231	10,366	4,713		
	2	12,957	22,873	15,196	5,480	9,746	14,466	9,964	4,658		
	3	13,808	24,569	17,618	5,728	9,760	13,293	9,836	4,553		
	4	14,592	17,893	14,451	5,351	10,337	12,464	9,854	4,559		
	5	17,652	21,762	17,049	5,784	12,282	14,367	11,643	4,756		
	6	-	-	-	-	-	-	-	-	-	
	7	-	-	-	-	-	-	-	-	-	
	8	-	-	-	-	-	-	-	-	-	
	9	-	-	-	-	-	-	-	-	-	
	10	-	-	-	-	-	-	-	-	-	
	11	-	-	-	-	-	-	-	-	-	
	12	-	-	-	-	-	-	-	-	-	

[Home <<](#)

[previous <<](#)

[next >>](#)

[chart](#)

Load Zone Monthly Average Energy Price - DA vs. RT										
year	month	avgRTMp_Houston	avgRTMp_North	avgRTMp_South	avgRTMp_West	avgDAMp_Houston	avgDAMp_North	avgDAMp_South	avgDAMp_West	
2018	1	\$ 39.47	\$ 38.65	\$ 53.81	\$ 34.86	\$ 42.24	\$ 44.85	\$ 52.06	\$ 39.65	
	2	\$ 24.34	\$ 26.14	\$ 24.82	\$ 25.22	\$ 22.81	\$ 22.74	\$ 24.57	\$ 22.50	
	3	\$ 19.97	\$ 19.38	\$ 22.64	\$ 22.79	\$ 24.70	\$ 23.37	\$ 26.22	\$ 22.58	
	4	\$ 24.84	\$ 25.06	\$ 25.02	\$ 21.02	\$ 25.55	\$ 25.28	\$ 27.35	\$ 21.42	
	5	\$ 34.38	\$ 36.88	\$ 37.31	\$ 56.83	\$ 39.95	\$ 43.08	\$ 43.09	\$ 52.45	
	6	\$ 35.79	\$ 33.97	\$ 33.39	\$ 65.89	\$ 34.05	\$ 33.91	\$ 33.53	\$ 58.47	
	7	\$ 47.28	\$ 49.79	\$ 47.92	\$ 67.06	\$ 96.21	\$ 101.92	\$ 98.48	\$ 112.38	
	8	\$ 39.07	\$ 39.32	\$ 40.89	\$ 37.46	\$ 34.63	\$ 35.04	\$ 35.67	\$ 34.80	
	9	\$ 29.92	\$ 31.42	\$ 30.61	\$ 27.56	\$ 29.11	\$ 29.87	\$ 29.36	\$ 27.71	
	10	\$ 38.98	\$ 40.11	\$ 39.61	\$ 34.97	\$ 33.45	\$ 33.12	\$ 33.15	\$ 30.40	
	11	\$ 40.99	\$ 36.95	\$ 39.15	\$ 35.80	\$ 32.91	\$ 33.42	\$ 33.83	\$ 31.67	
	12	\$ 28.56	\$ 29.93	\$ 28.42	\$ 35.76	\$ 31.02	\$ 32.07	\$ 32.04	\$ 35.32	
2019	1	\$ 24.67	\$ 24.09	\$ 26.47	\$ 25.06	\$ 26.05	\$ 25.21	\$ 27.25	\$ 28.00	
	2	\$ 23.30	\$ 24.58	\$ 32.08	\$ 28.80	\$ 22.05	\$ 21.64	\$ 24.07	\$ 23.14	
	3	\$ 29.20	\$ 30.43	\$ 31.39	\$ 29.53	\$ 29.73	\$ 31.70	\$ 32.82	\$ 32.28	
	4	\$ 27.40	\$ 27.56	\$ 29.52	\$ 26.44	\$ 25.43	\$ 24.98	\$ 27.35	\$ 22.10	
	5	\$ 27.39	\$ 26.14	\$ 29.81	\$ 31.35	\$ 26.22	\$ 24.92	\$ 27.53	\$ 29.11	
	6	\$ -	\$ -	\$ -	\$ -	\$ -	\$ -	\$ -	\$ -	
	7	\$ -	\$ -	\$ -	\$ -	\$ -	\$ -	\$ -	\$ -	
	8	\$ -	\$ -	\$ -	\$ -	\$ -	\$ -	\$ -	\$ -	
	9	\$ -	\$ -	\$ -	\$ -	\$ -	\$ -	\$ -	\$ -	
	10	\$ -	\$ -	\$ -	\$ -	\$ -	\$ -	\$ -	\$ -	
	11	\$ -	\$ -	\$ -	\$ -	\$ -	\$ -	\$ -	\$ -	
	12	\$ -	\$ -	\$ -	\$ -	\$ -	\$ -	\$ -	\$ -	

[Home <<](#)

[previous <<](#)

[next >>](#)

[chart](#)

ERCOT-wide Monthly Implied Heat Rate - DA vs. RT						
year	month	gasprice	rtn_spp	HR_rtn	dam_spp	HR_dam
2018	1	\$ 4.23	\$ 42.56	10.07	\$ 45.63	10.79
	2	\$ 2.63	\$ 25.24	9.61	\$ 23.21	8.83
	3	\$ 2.69	\$ 20.80	7.74	\$ 24.42	9.09
	4	\$ 2.83	\$ 24.54	8.67	\$ 25.49	9.00
	5	\$ 2.81	\$ 38.28	13.61	\$ 43.15	15.34
	6	\$ 3.00	\$ 37.29	12.42	\$ 36.15	12.03
	7	\$ 2.89	\$ 50.22	17.35	\$ 100.46	34.71
	8	\$ 3.01	\$ 39.51	13.14	\$ 35.08	11.67
	9	\$ 2.99	\$ 30.40	10.16	\$ 29.31	9.79
	10	\$ 3.48	\$ 39.09	11.22	\$ 32.92	9.45
	11	\$ 4.11	\$ 38.44	9.35	\$ 33.19	8.07
	12	\$ 3.92	\$ 29.90	7.62	\$ 32.19	8.21
2019	1	\$ 3.01	\$ 24.96	8.29	\$ 26.27	8.73
	2	\$ 2.67	\$ 26.69	10.01	\$ 22.55	8.46
	3	\$ 2.88	\$ 30.25	10.49	\$ 31.55	10.94
	4	\$ 2.57	\$ 27.90	10.85	\$ 25.38	9.87
	5	\$ 2.54	\$ 28.06	11.07	\$ 26.46	10.44
	6	\$ -	\$ -	-	\$ -	-
	7	\$ -	\$ -	-	\$ -	-
	8	\$ -	\$ -	-	\$ -	-
	9	\$ -	\$ -	-	\$ -	-
	10	\$ -	\$ -	-	\$ -	-
	11	\$ -	\$ -	-	\$ -	-
	12	\$ -	\$ -	-	\$ -	-

[Home <<](#)

[previous <<](#)

[next >>](#)

[chart](#)



Load Zone Monthly Implied Heat Rate - DA vs. RT									
year	month	HRdam_Houston	HRdam_South	HRdam_North	HRdam_West	HRrtm_Houston	HRrtm_South	HRrtm_North	HRrtm_West
2018	1	9.99	12.31	10.61	9.38	9.34	12.73	9.14	8.25
	2	8.68	9.35	8.65	8.56	9.26	9.44	9.95	9.60
	3	9.19	9.76	8.70	8.40	7.43	8.42	7.21	8.48
	4	9.02	9.66	8.93	7.57	8.77	8.84	8.85	7.42
	5	14.20	15.32	15.32	18.65	12.22	13.27	13.11	20.20
	6	11.34	11.16	11.29	19.47	11.92	11.12	11.31	21.94
	7	33.25	34.03	35.22	38.83	16.34	16.56	17.20	23.17
	8	11.52	11.86	11.66	11.57	13.00	13.60	13.08	12.46
	9	9.73	9.81	9.98	9.26	10.00	10.23	10.50	9.21
	10	9.60	9.52	9.51	8.73	11.19	11.37	11.52	10.04
	11	8.01	8.23	8.13	7.70	9.97	9.52	8.99	8.71
	12	7.91	8.17	8.18	9.01	7.28	7.25	7.63	9.12
2019	1	8.65	9.05	8.37	9.30	8.19	8.79	8.00	8.32
	2	8.27	9.03	8.12	8.68	8.74	12.04	9.22	10.81
	3	10.31	11.38	10.99	11.19	10.12	10.88	10.55	10.24
	4	9.89	10.63	9.71	8.59	10.65	11.48	10.72	10.28
	5	10.34	10.86	9.83	11.48	10.80	11.76	10.31	12.36
	6	-	-	-	-	-	-	-	-
	7	-	-	-	-	-	-	-	-
	8	-	-	-	-	-	-	-	-
	9	-	-	-	-	-	-	-	-
	10	-	-	-	-	-	-	-	-
	11	-	-	-	-	-	-	-	-
	12	-	-	-	-	-	-	-	-

[Home <<](#)

[previous <<](#)

[next >>](#)

[chart](#)

Daily ORDC Adders Average Values and Interval Duration								
YEAR	MONTH	DAY	PRICE_RS	PRICE_RDP	RS_CNT	RDP_CNT	RS_POS	RDP_POS
2019	5	1	\$ 2.53	\$ -	43	0	80	90
2019	5	2	\$ 0.01	\$ -	3	0	80	90
2019	5	3	\$ 0.16	\$ -	25	0	80	90
2019	5	4	\$ 18.90	\$ -	38	0	80	90
2019	5	5	\$ 0.12	\$ -	6	0	80	90
2019	5	6	\$ 0.12	\$ -	7	0	80	90
2019	5	7	\$ 0.13	\$ 5.73	22	18	80	90
2019	5	8	\$ 0.03	\$ -	4	0	80	90
2019	5	9	\$ -	\$ -	0	0	80	90
2019	5	10	\$ 0.10	\$ -	20	0	80	90
2019	5	11	\$ 0.08	\$ 0.78	15	15	80	90
2019	5	12	\$ 0.62	\$ 0.95	26	55	80	90
2019	5	13	\$ 1.85	\$ 0.87	31	22	80	90
2019	5	14	\$ 1.07	\$ -	29	0	80	90
2019	5	15	\$ 4.35	\$ -	28	0	80	90
2019	5	16	\$ 0.01	\$ -	3	0	80	90
2019	5	17	\$ 0.23	\$ -	11	0	80	90
2019	5	18	\$ 0.04	\$ -	2	0	80	90
2019	5	19	\$ 6.87	\$ -	27	0	80	90
2019	5	20	\$ 1.57	\$ -	6	0	80	90
2019	5	21	\$ -	\$ -	0	0	80	90
2019	5	22	\$ 2.85	\$ -	28	0	80	90
2019	5	23	\$ 0.14	\$ -	8	0	80	90
2019	5	24	\$ 0.83	\$ 0.28	30	6	80	90
2019	5	25	\$ 0.23	\$ 0.40	5	37	80	90
2019	5	26	\$ -	\$ -	0	0	80	90
2019	5	27	\$ 0.36	\$ -	15	0	80	90
2019	5	28	\$ 0.05	\$ -	10	0	80	90
2019	5	29	\$ 0.01	\$ -	4	0	80	90
2019	5	30	\$ 1.52	\$ 0.30	37	2	80	90
2019	5	31	\$ 24.54	\$ 0.60	44	5	80	90

[Home <<](#)

[previous <<](#)

[next >>](#)

[chart](#)

Monthly Average of Ancillary Services Required MW					
year	month	ASMW_REGDN	ASMW_NSPIN	ASMW_RRS	ASMW_REGUP
2018	1	283	1,601	2,829	299
	2	292	1,674	3,030	309
	3	296	1,560	3,001	306
	4	296	1,497	3,001	316
	5	320	1,601	2,782	339
	6	301	1,543	2,488	330
	7	304	1,386	2,403	333
	8	302	1,548	2,433	331
	9	309	1,585	2,543	326
	10	294	1,570	2,780	309
	11	256	1,582	2,895	273
	12	268	1,603	2,900	280
2019	1	285	1,578	2,898	295
	2	283	1,634	2,881	311
	3	287	1,487	2,893	306
	4	292	1,513	2,904	321
	5	314	1,550	2,712	345
	6	-	-	-	-
	7	-	-	-	-
	8	-	-	-	-
	9	-	-	-	-
	10	-	-	-	-
	11	-	-	-	-
	12	-	-	-	-

[Home <<](#)

[previous <<](#)

[next >>](#)

[chart](#)

Hourly Average of Ancillary Services Required MW					
year	DELIVERY_HOUR	ASMW_REGDN	ASMW_NSPIN	ASMW_RRS	ASMW_REGUP
2018	1	366	1,112	2,872	273
	2	275	1,112	2,872	215
	3	238	1,516	2,880	208
	4	204	1,516	2,880	221
	5	210	1,516	2,880	276
	6	305	1,516	2,880	439
	7	261	2,083	2,761	568
	8	237	2,083	2,761	348
	9	239	2,083	2,761	397
	10	276	2,083	2,761	385
	11	250	1,700	2,672	401
	12	239	1,700	2,672	382
	13	217	1,700	2,672	344
	14	220	1,700	2,672	306
	15	216	1,503	2,650	263
	16	212	1,503	2,650	254
	17	248	1,503	2,650	261
	18	285	1,503	2,650	295
	19	371	1,456	2,694	285
	20	363	1,456	2,694	272
	21	380	1,456	2,694	242
	22	465	1,456	2,694	269
	23	508	1,112	2,872	320
	24	451	1,112	2,872	276
2019	1	358	1,181	2,954	251
	2	264	1,181	2,954	203
	3	223	1,572	2,967	219
	4	204	1,572	2,967	242
	5	219	1,572	2,967	319
	6	332	1,572	2,967	484
	7	293	1,966	2,861	613
	8	242	1,966	2,861	353
	9	241	1,966	2,861	361
	10	252	1,966	2,861	357
	11	285	1,600	2,789	353
	12	239	1,600	2,789	341
	13	235	1,600	2,789	313
	14	226	1,600	2,789	290
	15	224	1,501	2,779	262
	16	215	1,501	2,779	274
	17	238	1,501	2,779	288
	18	264	1,501	2,779	327
	19	349	1,486	2,790	330
	20	358	1,486	2,790	313
	21	373	1,486	2,790	277
	22	458	1,486	2,790	256
	23	496	1,181	2,954	263
	24	435	1,181	2,954	289

[Home <<](#)

[previous <<](#)

[next >>](#)

[chart](#)

Monthly Average Ancillary Services Price					
year	month	MCPC_REGDN	MCPC_NSPIN	MCPC_RRS	MCPC_REGUP
2018	1	\$ 4.36	\$ 43.10	\$ 21.06	\$ 22.87
	2	\$ 4.45	\$ 3.14	\$ 9.40	\$ 8.48
	3	\$ 7.71	\$ 3.01	\$ 13.87	\$ 8.86
	4	\$ 12.98	\$ 3.86	\$ 13.76	\$ 9.59
	5	\$ 7.51	\$ 12.51	\$ 19.12	\$ 14.58
	6	\$ 2.62	\$ 4.10	\$ 10.51	\$ 6.98
	7	\$ 3.28	\$ 17.86	\$ 56.96	\$ 45.45
	8	\$ 2.37	\$ 4.98	\$ 12.34	\$ 8.85
	9	\$ 2.49	\$ 2.67	\$ 8.86	\$ 6.90
	10	\$ 3.99	\$ 5.24	\$ 18.25	\$ 10.91
	11	\$ 4.30	\$ 5.80	\$ 18.44	\$ 11.28
	12	\$ 6.21	\$ 3.48	\$ 12.53	\$ 11.00
2019	1	\$ 6.43	\$ 1.71	\$ 11.01	\$ 9.40
	2	\$ 13.14	\$ 1.66	\$ 9.70	\$ 8.88
	3	\$ 13.34	\$ 5.10	\$ 15.43	\$ 13.77
	4	\$ 16.00	\$ 5.03	\$ 15.59	\$ 14.42
	5	\$ 7.83	\$ 4.27	\$ 9.47	\$ 11.00
	6	\$ -	\$ -	\$ -	\$ -
	7	\$ -	\$ -	\$ -	\$ -
	8	\$ -	\$ -	\$ -	\$ -
	9	\$ -	\$ -	\$ -	\$ -
	10	\$ -	\$ -	\$ -	\$ -
	11	\$ -	\$ -	\$ -	\$ -
	12	\$ -	\$ -	\$ -	\$ -

[Home <<](#)

[previous <<](#)

[next >>](#)

[chart](#)

Monthly Average A/S Cost per MWh Load					
year	month	AScost_REGDN	AScost_NSPIIN	AScost_RRS	AScost_REGUP
2018	1	\$ 0.03	\$ 1.64	\$ 1.42	\$ 0.16
	2	\$ 0.03	\$ 0.14	\$ 0.74	\$ 0.07
	3	\$ 0.06	\$ 0.13	\$ 1.18	\$ 0.08
	4	\$ 0.11	\$ 0.16	\$ 1.16	\$ 0.08
	5	\$ 0.05	\$ 0.44	\$ 1.17	\$ 0.11
	6	\$ 0.02	\$ 0.12	\$ 0.50	\$ 0.04
	7	\$ 0.02	\$ 0.46	\$ 2.57	\$ 0.28
	8	\$ 0.01	\$ 0.15	\$ 0.57	\$ 0.06
	9	\$ 0.02	\$ 0.09	\$ 0.50	\$ 0.05
	10	\$ 0.03	\$ 0.21	\$ 1.30	\$ 0.09
	11	\$ 0.03	\$ 0.24	\$ 1.42	\$ 0.08
	12	\$ 0.04	\$ 0.14	\$ 0.94	\$ 0.08
2019	1	\$ 0.05	\$ 0.07	\$ 0.80	\$ 0.07
	2	\$ 0.10	\$ 0.07	\$ 0.72	\$ 0.07
	3	\$ 0.10	\$ 0.20	\$ 1.19	\$ 0.11
	4	\$ 0.13	\$ 0.20	\$ 1.22	\$ 0.12
	5	\$ 0.06	\$ 0.15	\$ 0.60	\$ 0.09
	6	\$ -	\$ -	\$ -	\$ -
	7	\$ -	\$ -	\$ -	\$ -
	8	\$ -	\$ -	\$ -	\$ -
	9	\$ -	\$ -	\$ -	\$ -
	10	\$ -	\$ -	\$ -	\$ -
	11	\$ -	\$ -	\$ -	\$ -
	12	\$ -	\$ -	\$ -	\$ -

[Home <<](#)

[previous <<](#)

[next >>](#)

[chart](#)

ERCOT-wide Cumulative PNM			
year	month	pnm	pnm_accum
2018	0	\$ -	\$ -
	1	\$ 7,139.99	\$ 7,139.99
	2	\$ 3,011.86	\$ 10,151.85
	3	\$ 870.03	\$ 11,021.88
	4	\$ 2,333.76	\$ 13,355.64
	5	\$ 5,671.10	\$ 19,026.74
	6	\$ 4,930.69	\$ 23,957.43
	7	\$ 13,313.16	\$ 37,270.59
	8	\$ 7,965.15	\$ 45,235.74
	9	\$ 3,181.93	\$ 48,417.67
	10	\$ 6,676.58	\$ 55,094.25
	11	\$ 6,257.98	\$ 61,352.23
	12	\$ 941.00	\$ 62,293.23
2019	0	\$ -	\$ -
	1	\$ 1,594.61	\$ 1,594.61
	2	\$ 3,042.70	\$ 4,637.31
	3	\$ 4,087.75	\$ 8,725.06
	4	\$ 4,232.61	\$ 12,957.67
	5	\$ 3,234.19	\$ 16,191.86
	6	\$ -	\$ -
	7	\$ -	\$ -
	8	\$ -	\$ -
	9	\$ -	\$ -
	10	\$ -	\$ -
	11	\$ -	\$ -
	12	\$ -	\$ -

[Home <<](#)

[previous <<](#)

[next >>](#)

[chart](#)

DA vs. RT Load Forecast Error by Hour Ending							
year	month	HE_1_4	HE_13_16	HE_17_20	HE_21_24	HE_5_8	HE_9_12
2018	1	226	1,083	1,300	791	129	705
	2	(662)	(1,007)	(1,256)	(1,119)	(497)	(990)
	3	(289)	489	568	229	(14)	152
	4	(131)	(131)	158	(130)	(190)	(430)
	5	99	754	586	294	63	331
	6	(325)	302	181	(100)	(338)	275
	7	62	734	823	459	(23)	465
	8	(54)	511	562	138	(184)	150
	9	(306)	669	650	52	(344)	(68)
	10	367	352	532	543	166	(168)
	11	(191)	853	648	37	(577)	(30)
	12	(96)	(296)	(112)	(79)	(80)	(255)
2019	1	(69)	2	10	(37)	207	245
	2	(412)	(246)	(679)	(749)	(361)	(378)
	3	275	(45)	258	142	152	(52)
	4	125	668	573	292	35	171
	5	(32)	5	(31)	19	(21)	76
	6	-	-	-	-	-	-
	7	-	-	-	-	-	-
	8	-	-	-	-	-	-
	9	-	-	-	-	-	-
	10	-	-	-	-	-	-
	11	-	-	-	-	-	-
	12	-	-	-	-	-	-

[Home <<](#)

[previous <<](#)

[next >>](#)

[chart](#)



Monthly Average of Wind Generation by Hour Ending							
year	month	HE_1_4	HE_13_16	HE_17_20	HE_21_24	HE_5_8	HE_9_12
2018	1	9,387	7,209	7,508	9,601	9,171	7,514
	2	8,876	7,295	7,771	9,462	8,559	7,545
	3	10,159	7,784	8,052	10,006	9,143	8,480
	4	10,025	8,403	9,183	10,641	9,227	8,549
	5	11,505	7,360	9,027	11,105	9,862	8,186
	6	11,843	7,661	9,377	11,080	9,922	8,937
	7	7,895	3,590	5,418	7,058	6,434	4,248
	8	9,401	5,402	6,821	9,075	7,803	6,410
	9	6,222	4,201	5,415	6,741	4,833	4,036
	10	7,988	6,184	6,290	7,640	7,413	6,738
	11	9,151	6,413	6,543	8,872	8,685	6,866
	12	9,512	6,983	7,137	9,202	8,850	7,547
2019	1	9,500	7,954	7,892	9,491	9,141	7,897
	2	10,520	8,015	8,843	10,755	9,358	7,631
	3	9,471	6,980	7,408	9,114	8,585	7,389
	4	10,770	9,020	9,488	11,220	10,180	9,034
	5	10,907	8,497	9,689	10,736	9,414	8,343
	6	-	-	-	-	-	-
	7	-	-	-	-	-	-
	8	-	-	-	-	-	-
	9	-	-	-	-	-	-
	10	-	-	-	-	-	-
	11	-	-	-	-	-	-
	12	-	-	-	-	-	-

[Home <<](#)

[previous <<](#)

[next >>](#)

[chart](#)

RT Congestion Constraint Rankings - Top 10 Constraints by Binding Frequency and Top 10 Constraints by Total Congestion Rent																
category	year	item	rankvar	rank	JAN	FEB	MAR	APR	MAY	JUN	JUL	AUG	SEP	OCT	NOV	DEC
FREQ_EXIST	2019	BARL_FTSW1_1 (FTSW-BARL)	13,450	1	1,340	2,467	3,067	2,346	4,230	-	-	-	-	-	-	-
FREQ_EXIST	2019	HAMILT_MAVR11_1 (HAMILTON-MAVERICK)	8,654	2	520	2,373	827	3,178	1,756	-	-	-	-	-	-	-
FREQ_EXIST	2019	38T365_1 (WIRTZ-FLATRO)	4,499	3	1,277	1,393	1,371	267	191	-	-	-	-	-	-	-
FREQ_EXIST	2019	PANHANDLE_GTC (PNHNDL)	4,289	4	61	594	623	928	2,083	-	-	-	-	-	-	-
FREQ_EXIST	2019	RIOPEC_WOODW21_1 (WOODWRD2-RIOPECOS)	3,444	5	658	698	401	779	908	-	-	-	-	-	-	-
FREQ_EXIST	2019	16TH_WRD2_1 (WOODWRD2-16TH_ST)	3,019	6	386	666	1,783	184	-	-	-	-	-	-	-	-
FREQ_EXIST	2019	SONR_69-1 (SONR-SONR)	2,988	7	528	37	-	-	2,423	-	-	-	-	-	-	-
FREQ_EXIST	2019	NLARSW_PILONC1_1 (NLARSW-PILONCIL)	2,883	8	511	171	569	1,031	601	-	-	-	-	-	-	-
FREQ_EXIST	2019	HHGTOM_1 (HHGT-OMEGA)	2,581	9	-	-	970	1,611	-	-	-	-	-	-	-	-
FREQ_EXIST	2019	TNAF_TNFS_1 (TNAF-16TH_ST)	2,395	10	811	352	244	827	161	-	-	-	-	-	-	-
TOP10_RENT	2019	HILL_MAR_2_1 (MARION-HILLCTRY)	\$ 27.06	1	\$ -	\$ 27.06	\$ -	\$ -	\$ -	\$ -	\$ -	\$ -	\$ -	\$ -	\$ -	\$ -
TOP10_RENT	2019	PANHANDLE_GTC (PNHNDL)	\$ 24.83	2	\$ 0.35	\$ 2.64	\$ 2.06	\$ 6.40	\$ 13.38	\$ -	\$ -	\$ -	\$ -	\$ -	\$ -	\$ -
TOP10_RENT	2019	BARL_FTSW1_1 (FTSW-BARL)	\$ 23.82	3	\$ 0.68	\$ 3.97	\$ 4.52	\$ 4.13	\$ 10.52	\$ -	\$ -	\$ -	\$ -	\$ -	\$ -	\$ -
TOP10_RENT	2019	588_A_1 (LWSVW-LWVTI)	\$ 19.04	4	\$ -	\$ -	\$ 12.37	\$ 6.67	\$ -	\$ -	\$ -	\$ -	\$ -	\$ -	\$ -	\$ -
TOP10_RENT	2019	LON_HILL_XFMRS (LON_HILL-LON_HILL)	\$ 18.41	5	\$ 6.25	\$ 0.00	\$ 4.29	\$ 6.12	\$ 1.75	\$ -	\$ -	\$ -	\$ -	\$ -	\$ -	\$ -
TOP10_RENT	2019	16TH_WRD2_1 (WOODWRD2-16TH_ST)	\$ 18.35	6	\$ 2.13	\$ 6.59	\$ 8.41	\$ 1.21	\$ -	\$ -	\$ -	\$ -	\$ -	\$ -	\$ -	\$ -
TOP10_RENT	2019	SONR_69-1 (SONR-SONR)	\$ 15.03	7	\$ 0.15	\$ 0.10	\$ -	\$ -	\$ 14.77	\$ -	\$ -	\$ -	\$ -	\$ -	\$ -	\$ -
TOP10_RENT	2019	6437_F (SRCV-KNAPP)	\$ 12.09	8	\$ 2.16	\$ 5.48	\$ 2.25	\$ 1.96	\$ 0.25	\$ -	\$ -	\$ -	\$ -	\$ -	\$ -	\$ -
TOP10_RENT	2019	HAMILT_MAVR11_1 (HAMILTON-MAVERICK)	\$ 11.45	9	\$ 0.89	\$ 4.31	\$ 0.86	\$ 3.55	\$ 1.85	\$ -	\$ -	\$ -	\$ -	\$ -	\$ -	\$ -
TOP10_RENT	2019	6260_C (EMSES-EMMCP)	\$ 9.80	10	\$ -	\$ -	\$ -	\$ 9.80	\$ -	\$ -	\$ -	\$ -	\$ -	\$ -	\$ -	\$ -

[Home <<](#)

[previous <<](#)

[next >>](#)

[chart 1](#)

[chart 2](#)

DA Congestion Constraint Rankings - Top 10 Constraints by Binding Frequency and Top 10 Constraints by Total Congestion Rent																	
category	year	item	rankvar	rank	JAN	FEB	MAR	APR	MAY	JUN	JUL	AUG	SEP	OCT	NOV	DEC	
FREQ_EXIST	2019	BARL_FTSW1_1 (FTSW-BARL)	2,407	1	308	325	473	630	671	-	-	-	-	-	-	-	
FREQ_EXIST	2019	HAMILT_MAVERI1_1 (HAMILTON-MAVERICK)	2,118	2	482	469	252	484	431	-	-	-	-	-	-	-	
FREQ_EXIST	2019	LON_HILL_XFMRS (LON_HILL-LON_HILL)	1,860	3	250	192	417	597	404	-	-	-	-	-	-	-	
FREQ_EXIST	2019	6437_F (SCRCV-KNAPP)	1,768	4	261	489	475	391	152	-	-	-	-	-	-	-	
FREQ_EXIST	2019	138_ALV_MNL_1 (ALVIN-MAINLAND)	1,764	5	60	200	363	669	472	-	-	-	-	-	-	-	
FREQ_EXIST	2019	RINCON_WHITE_2_1 (WHITE_PT-RINCON)	1,662	6	284	163	395	451	369	-	-	-	-	-	-	-	
FREQ_EXIST	2019	BARNHR_BIGLAK1_1 (BIGLAKE-BARNHRT)	1,550	7	294	175	398	161	522	-	-	-	-	-	-	-	
FREQ_EXIST	2019	RIOPEC_WOODW21_1 (RIOPECOS-WOODWRD2)	1,431	8	491	292	378	139	131	-	-	-	-	-	-	-	
FREQ_EXIST	2019	38T365_1 (WIRTZ-FLATRO)	1,398	9	410	356	365	102	165	-	-	-	-	-	-	-	
FREQ_EXIST	2019	EAGLEP_ESCOND1_1 (ESCONDID-EAGLE_PS)	1,192	10	221	166	254	281	270	-	-	-	-	-	-	-	
TOP10_RENT	2019	BARL_FTSW1_1 (FTSW-BARL)	\$ 26.32	1	\$ 1.48	\$ 2.39	\$ 6.22	\$ 3.68	\$ 12.55	\$ -	\$ -	\$ -	\$ -	\$ -	\$ -	\$ -	
TOP10_RENT	2019	HUMBLT_NOVICT1_1 (HUMBLTAP-NOVICTAP)	\$ 23.00	2	\$ 22.89	\$ 0.01	\$ 0.02	\$ 0.03	\$ 0.04	\$ -	\$ -	\$ -	\$ -	\$ -	\$ -	\$ -	
TOP10_RENT	2019	COLEMAN JUNCTION (SANA-GLSB)	\$ 22.96	3	\$ 22.86	\$ 0.02	\$ 0.05	\$ 0.02	\$ 0.01	\$ -	\$ -	\$ -	\$ -	\$ -	\$ -	\$ -	
TOP10_RENT	2019	PANHANDLE GTC (PNHNDL)	\$ 18.82	4	\$ 0.89	\$ 2.17	\$ 0.47	\$ 3.29	\$ 12.00	\$ -	\$ -	\$ -	\$ -	\$ -	\$ -	\$ -	
TOP10_RENT	2019	588_A_1 (LWSVW-LWVTI)	\$ 17.35	5	\$ -	\$ -	\$ 11.10	\$ 6.22	\$ 0.02	\$ -	\$ -	\$ -	\$ -	\$ -	\$ -	\$ -	
TOP10_RENT	2019	LON_HILL_XFMRS (LON_HILL-LON_HILL)	\$ 16.73	6	\$ 1.51	\$ 1.42	\$ 4.86	\$ 6.15	\$ 2.78	\$ -	\$ -	\$ -	\$ -	\$ -	\$ -	\$ -	
TOP10_RENT	2019	RIOPEC_WOODW21_1 (RIOPECOS-WOODWRD2)	\$ 13.71	7	\$ 9.00	\$ 0.80	\$ 2.85	\$ 0.40	\$ 0.66	\$ -	\$ -	\$ -	\$ -	\$ -	\$ -	\$ -	
TOP10_RENT	2019	590_B (LWJS-LKPNT)	\$ 12.50	8	\$ -	\$ -	\$ 6.96	\$ 2.10	\$ 3.44	\$ -	\$ -	\$ -	\$ -	\$ -	\$ -	\$ -	
TOP10_RENT	2019	16TH_WRD2_1 (WOODWRD2-16TH_ST)	\$ 12.34	9	\$ 2.30	\$ 2.70	\$ 6.20	\$ 1.14	\$ -	\$ -	\$ -	\$ -	\$ -	\$ -	\$ -	\$ -	
TOP10_RENT	2019	HAMILT_MAVERI1_1 (HAMILTON-MAVERICK)	\$ 11.55	10	\$ 1.01	\$ 4.30	\$ 0.91	\$ 2.39	\$ 2.94	\$ -	\$ -	\$ -	\$ -	\$ -	\$ -	\$ -	

[Home <<](#)

[previous <<](#)

[next >>](#)

[chart 1](#)

[chart 2](#)

Top 10 CRR Pairs Ranked by Monthly Auction Values - Top 10 PTP Obligations by Total Transaction Values and Top 10 PTP Options by Total Transaction Values																	
fr_option	year	pair	total_value	rank	JAN	FEB	MAR	APR	MAY	JUN	JUL	AUG	SEP	OCT	NOV	DEC	
N	2019	HB WEST-LZ WEST	\$ 14.34	1	\$ 2.01	\$ 2.53	\$ 1.75	\$ 1.95	\$ 2.39	\$ 3.71	\$ -	\$ -	\$ -	\$ -	\$ -	\$ -	
N	2019	HB SOUTH-LZ SOUTH	\$ 9.40	2	\$ 1.54	\$ 0.89	\$ 0.95	\$ 1.03	\$ 2.19	\$ 2.80	\$ -	\$ -	\$ -	\$ -	\$ -	\$ -	
N	2019	HB HOUSTON-LZ HOUSTON	\$ 4.24	3	\$ 0.53	\$ 0.25	\$ 0.25	\$ 0.70	\$ 1.24	\$ 1.27	\$ -	\$ -	\$ -	\$ -	\$ -	\$ -	
N	2019	HB WEST-HB NORTH	\$ 4.08	4	\$ 1.03	\$ 0.33	\$ 0.69	\$ 0.83	\$ 0.66	\$ 0.54	\$ -	\$ -	\$ -	\$ -	\$ -	\$ -	
N	2019	HB NORTH-LZ NORTH	\$ 3.89	5	\$ 0.89	\$ 0.49	\$ 0.21	\$ 0.54	\$ 0.69	\$ 1.08	\$ -	\$ -	\$ -	\$ -	\$ -	\$ -	
N	2019	HB NORTH-HB HOUSTON	\$ 3.78	6	\$ 0.06	\$ 0.00	\$ 0.91	\$ 1.02	\$ 0.93	\$ 0.86	\$ -	\$ -	\$ -	\$ -	\$ -	\$ -	
N	2019	CPSES UNIT2-HB NORTH	\$ 1.99	7	\$ -	\$ 0.20	\$ 0.24	\$ 0.62	\$ 0.48	\$ 0.44	\$ -	\$ -	\$ -	\$ -	\$ -	\$ -	
N	2019	JCKCNTY2_ST2-LZ NORTH	\$ 1.69	8	\$ 0.27	\$ 0.15	\$ 0.20	\$ 0.20	\$ 0.35	\$ 0.50	\$ -	\$ -	\$ -	\$ -	\$ -	\$ -	
N	2019	HB PAN-HB WEST	\$ 1.59	9	\$ -	\$ -	\$ -	\$ -	\$ 0.39	\$ 1.19	\$ -	\$ -	\$ -	\$ -	\$ -	\$ -	
N	2019	CPSES UNIT1-HB NORTH	\$ 1.14	10	\$ 0.32	\$ 0.19	\$ 0.23	\$ -	\$ -	\$ 0.40	\$ -	\$ -	\$ -	\$ -	\$ -	\$ -	
Y	2019	HB SOUTH-LZ SOUTH	\$ 2.90	1	\$ 0.32	\$ 0.41	\$ 0.30	\$ 0.31	\$ 0.46	\$ 1.08	\$ -	\$ -	\$ -	\$ -	\$ -	\$ -	
Y	2019	HB WEST-LZ WEST	\$ 2.90	2	\$ 0.27	\$ 0.13	\$ 0.38	\$ 0.30	\$ 0.50	\$ 1.31	\$ -	\$ -	\$ -	\$ -	\$ -	\$ -	
Y	2019	HB NORTH-LZ NORTH	\$ 2.64	3	\$ 0.46	\$ 0.22	\$ 0.37	\$ 0.46	\$ 0.51	\$ 0.63	\$ -	\$ -	\$ -	\$ -	\$ -	\$ -	
Y	2019	RIGGIN UNIT1-REROCK ALL	\$ 2.39	4	\$ 0.02	\$ 0.04	\$ 0.49	\$ 0.94	\$ 0.31	\$ 0.59	\$ -	\$ -	\$ -	\$ -	\$ -	\$ -	
Y	2019	REROCK ALL-HOVEY GEN	\$ 1.53	5	\$ 0.07	\$ 0.17	\$ 0.19	\$ 0.60	\$ 0.36	\$ 0.14	\$ -	\$ -	\$ -	\$ -	\$ -	\$ -	
Y	2019	HB WEST-HOVEY GEN	\$ 1.07	6	\$ 0.18	\$ 0.03	\$ 0.06	\$ 0.05	\$ 0.05	\$ 0.70	\$ -	\$ -	\$ -	\$ -	\$ -	\$ -	
Y	2019	WOO WOODWRD1-RIGGIN UNIT1	\$ 0.95	7	\$ 0.05	\$ 0.10	\$ 0.04	\$ 0.17	\$ 0.37	\$ 0.22	\$ -	\$ -	\$ -	\$ -	\$ -	\$ -	
Y	2019	HB WEST-HB NORTH	\$ 0.75	8	\$ 0.23	\$ 0.07	\$ 0.12	\$ 0.15	\$ 0.11	\$ 0.09	\$ -	\$ -	\$ -	\$ -	\$ -	\$ -	
Y	2019	HB HOUSTON-LZ HOUSTON	\$ 0.72	9	\$ 0.06	\$ 0.09	\$ 0.07	\$ 0.13	\$ 0.20	\$ 0.18	\$ -	\$ -	\$ -	\$ -	\$ -	\$ -	
Y	2019	KEO_KEO_SM1-RIGGIN UNIT1	\$ 0.71	10	\$ 0.01	\$ 0.06	\$ 0.14	\$ 0.46	\$ 0.02	\$ 0.02	\$ -	\$ -	\$ -	\$ -	\$ -	\$ -	

[Home <<](#)

[previous <<](#)

[chart 1](#)

[chart 2](#)