

To the Public Utility Commission of Texas

# ERCOT Wholesale Electricity Market Monthly Report

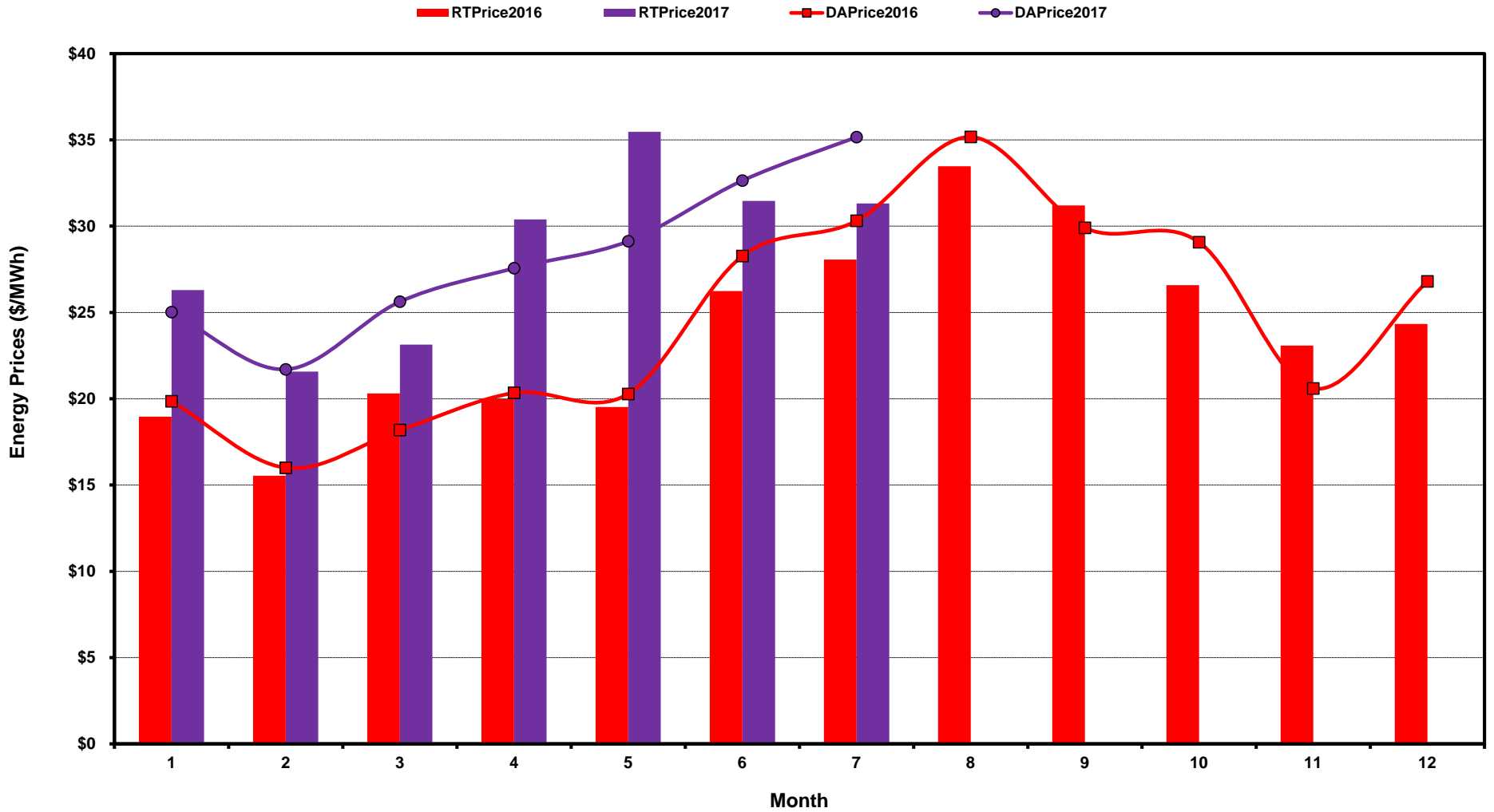
Friday, August 11, 2017

Potomac Economics, Ltd.  
Independent Market Monitor

1	ERCOT-wide Average Energy Prices DA vs. RT	<a href="#">chart</a>	<a href="#">table</a>
2	Load Zone Load Statistics	<a href="#">chart</a>	<a href="#">table</a>
3	Load Zone Monthly Average Energy Prices DA vs RT	<a href="#">chart</a>	<a href="#">table</a>
4	ERCOT-wide Monthly Implied Heat Rates DA vs RT	<a href="#">chart</a>	<a href="#">table</a>
5	Load Zone Monthly Implied Heat Rates DA vs RT	<a href="#">chart</a>	<a href="#">table</a>
6	Daily ORDC Reserve Adder Avg. Value and Duration	<a href="#">chart</a>	<a href="#">table</a>
7	Monthly Ancillary Services Required MW	<a href="#">chart</a>	<a href="#">table</a>
8	Hourly Average of Ancillary Services Required MW	<a href="#">chart</a>	<a href="#">table</a>
9	Monthly Average Ancillary Services Price	<a href="#">chart</a>	<a href="#">table</a>
10	Monthly Average A/S Cost per MWh Load	<a href="#">chart</a>	<a href="#">table</a>
11	Ercot-wide Cumulative Peaker Net Margin	<a href="#">chart</a>	<a href="#">table</a>
12	DA vs. RT Load Forecast Error by Hour Ending	<a href="#">chart</a>	<a href="#">table</a>
13	Monthly Average of Wind Generation by Hour Ending	<a href="#">chart</a>	<a href="#">table</a>
14	RT Constraint Rankings		<a href="#">table</a>
	- Top 10 Constraints by Total Congestion Value	<a href="#">chart</a>	
	- Top 10 Constraints by Binding Frequency	<a href="#">chart</a>	
15	DA Constraint Rankings		<a href="#">table</a>
	- Top 10 Constraints by Total Congestion Value	<a href="#">chart</a>	
	- Top 10 Constraints by Binding Frequency	<a href="#">chart</a>	
16	CRR Pairs by Monthly Auction Value Rankings		<a href="#">table</a>
	- Top 10 PTP Obligations by Total Transaction Value	<a href="#">chart</a>	
	- Top 10 PTP Options by Total Transaction Value	<a href="#">chart</a>	

# ERCOT-wide Average Energy Prices DA vs RT

(avg. DA & RT SPPs weighted by Real Time Settlement Loads)



[Home <<](#)

[previous <<](#)

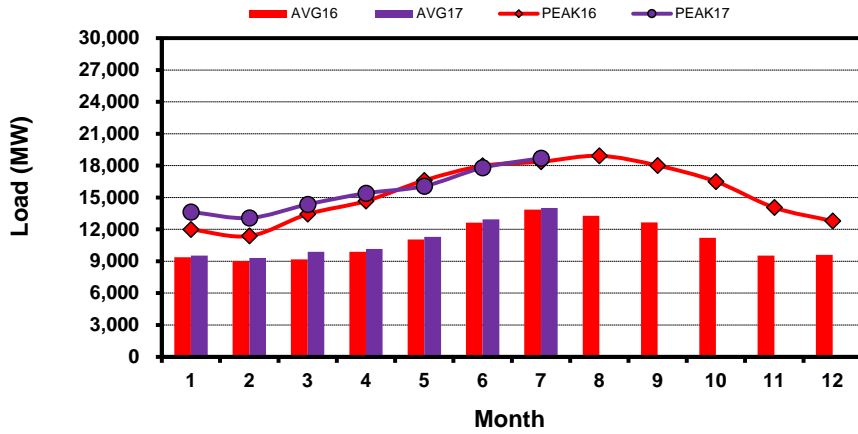
[next >>](#)

[data](#)

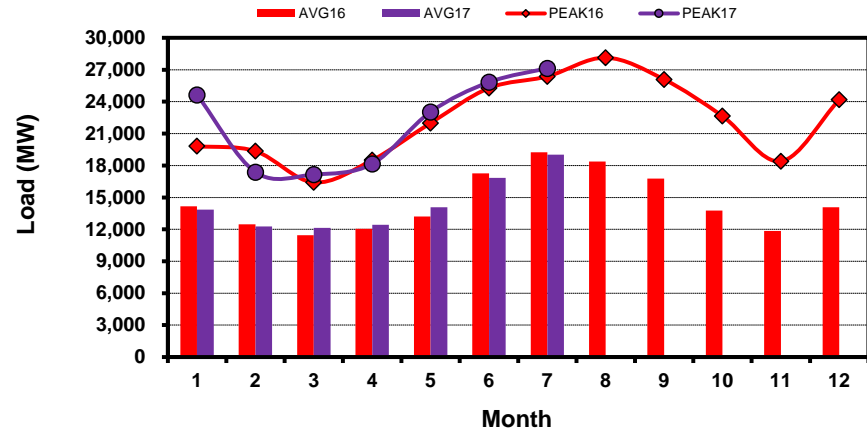
# Load Zone Load Statistics

(Nodal load zone made comparable to zonal system Load Zone definitions\*)

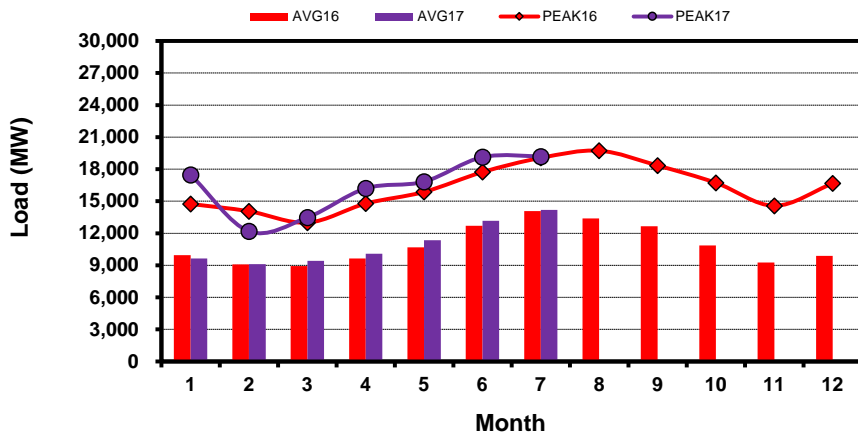
### Houston Zone



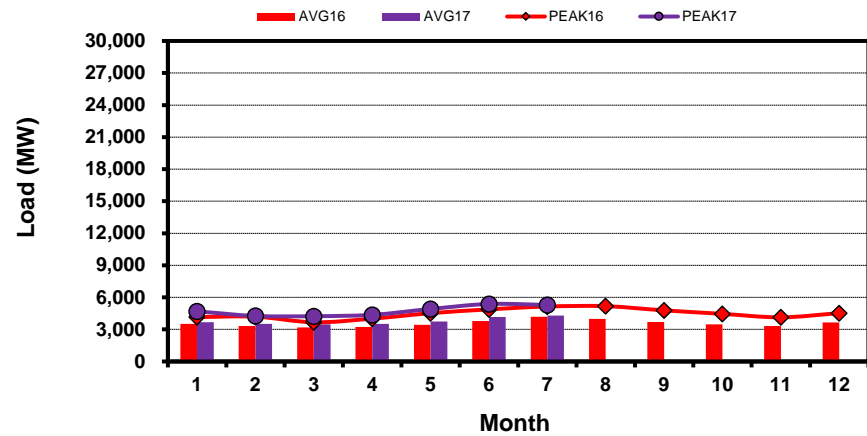
### North Zone



### South Zone



### West Zone



[Home <<](#)

[previous <<](#)

[next >>](#)

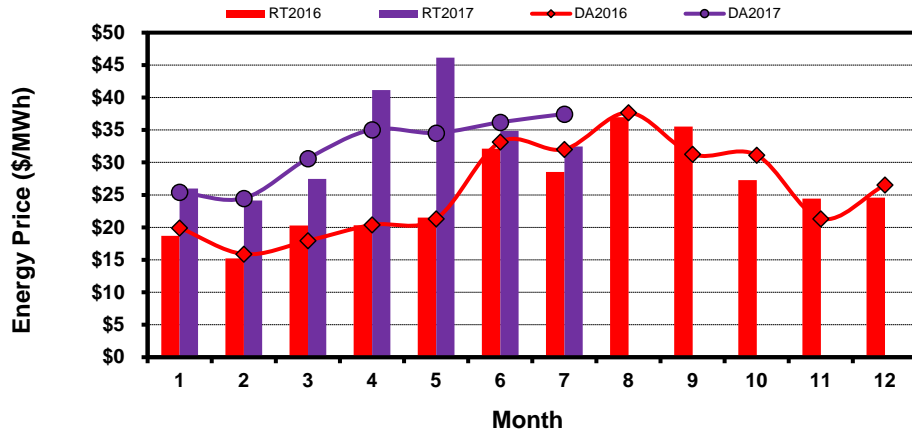
[data](#)

**Note:** \* Zonal load zone definition vs. Nodal comparable load zone definition: LZ\_Houston=LZ\_Houston; LZ\_West=LZ\_West; LZ\_North=(LZ\_North,LZ\_RAYBN); LZ\_South=(LZ\_South,LZ\_CPS,LZ\_AEN,LZ\_LCRA)

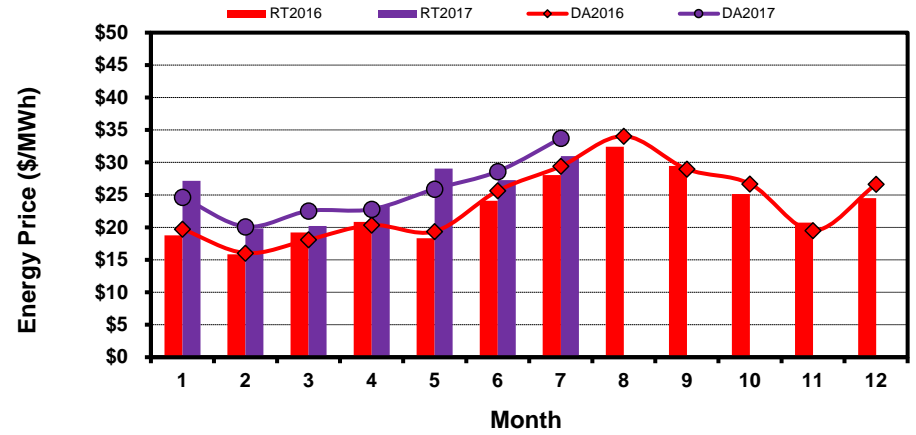
# Load Zone Monthly Average Energy Price DA vs RT

(avg. DA & RT SPPs weighted by Real Time Settlement Loads)  
 (Nodal load zone made comparable to zonal system Load Zone definitions\*)

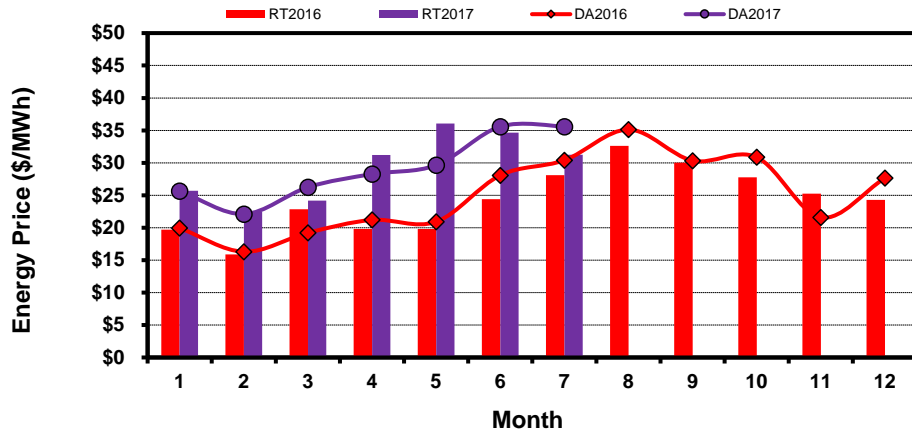
### Houston Zone



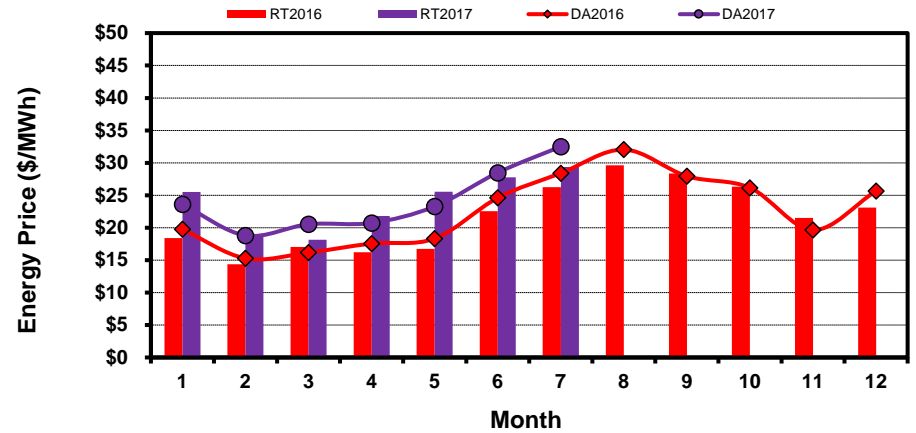
### North Zone



### South Zone



### West Zone



[Home <<](#)

[previous <<](#)

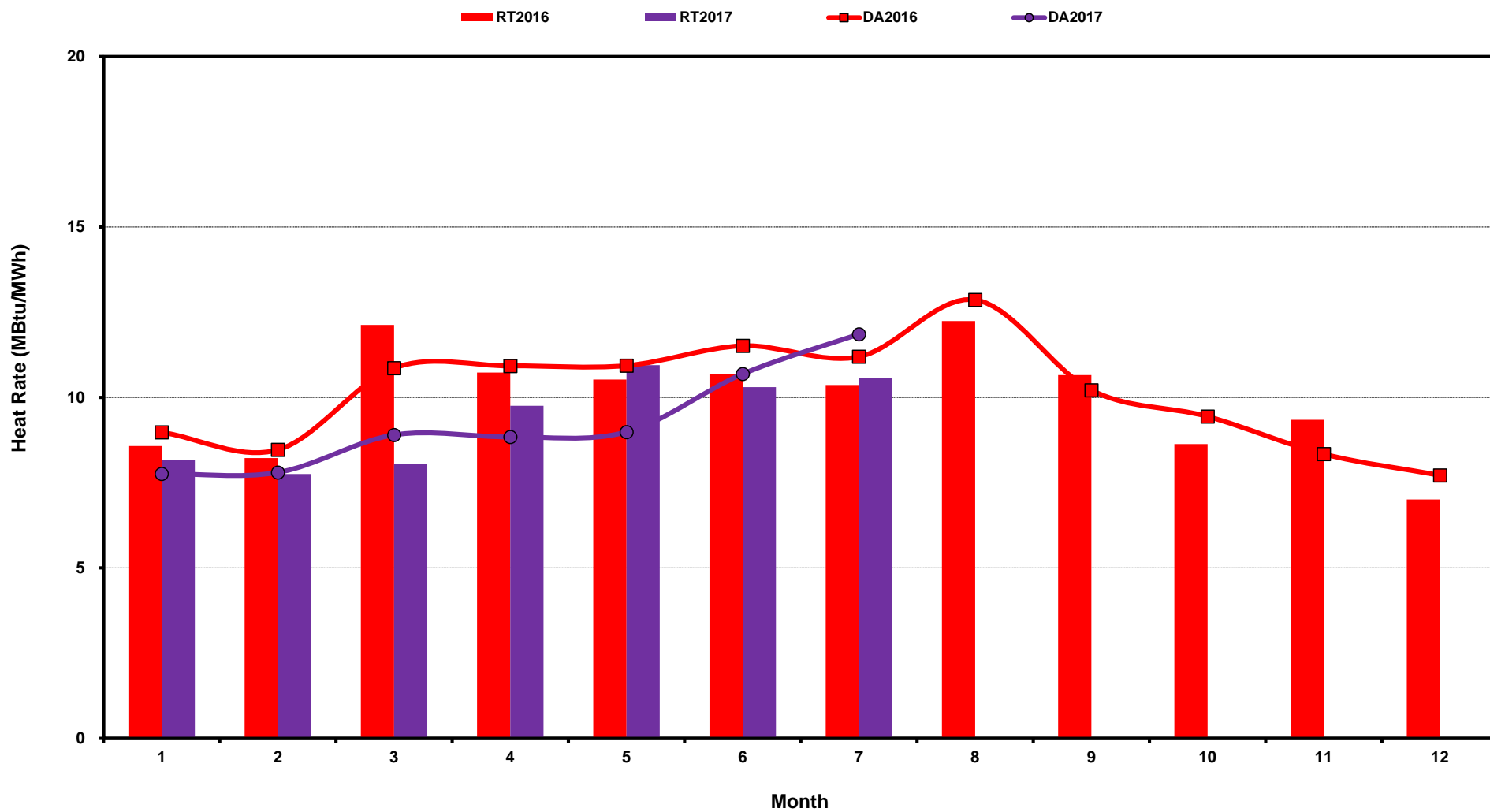
[next >>](#)

[data](#)

**Note:** \* Zonal load zone definition vs. Nodal comparable load zone definition: LZ\_Houston=LZ\_Houston; LZ\_West=LZ\_West; LZ\_North=(LZ\_North,LZ\_RAYBN); LZ\_South=(LZ\_South,LZ\_CPS,LZ\_AEN,LZ\_LCRA)

# ERCOT-wide Monthly Implied Heat Rate DA vs RT

(avg. heat rates weighted by Real Time Settlement Loads)



[Home <<](#)

[previous <<](#)

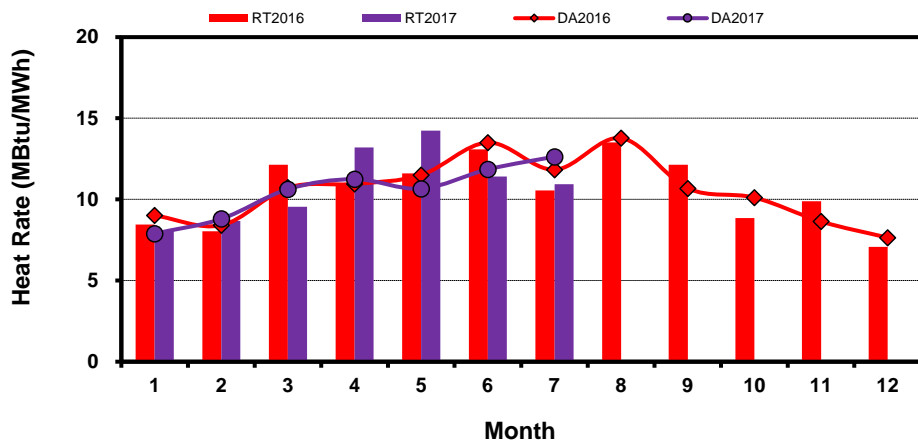
[next >>](#)

[data](#)

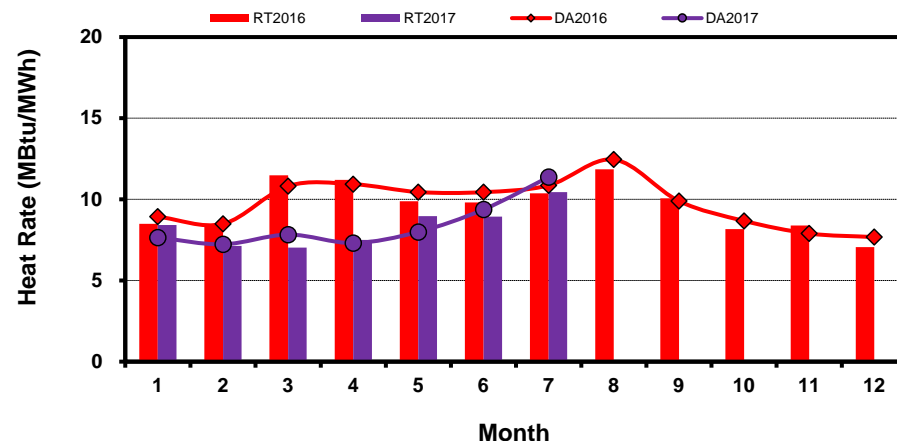
# Load Zone Monthly Implied Heat Rate DA vs RT

(avg. heat rates weighted by Real Time Settlement Loads)  
 (Nodal load zone made comparable to zonal system Load Zone definitions\*)

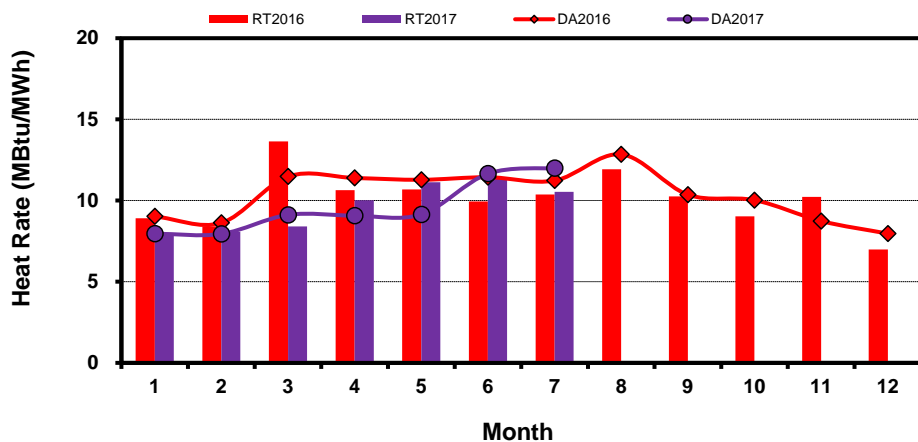
### Houston Zone



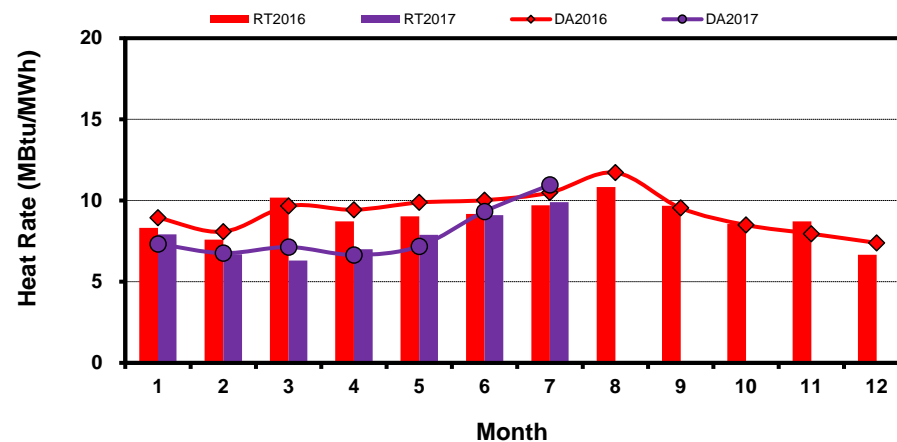
### North Zone



### South Zone



### West Zone



[Home <<](#)

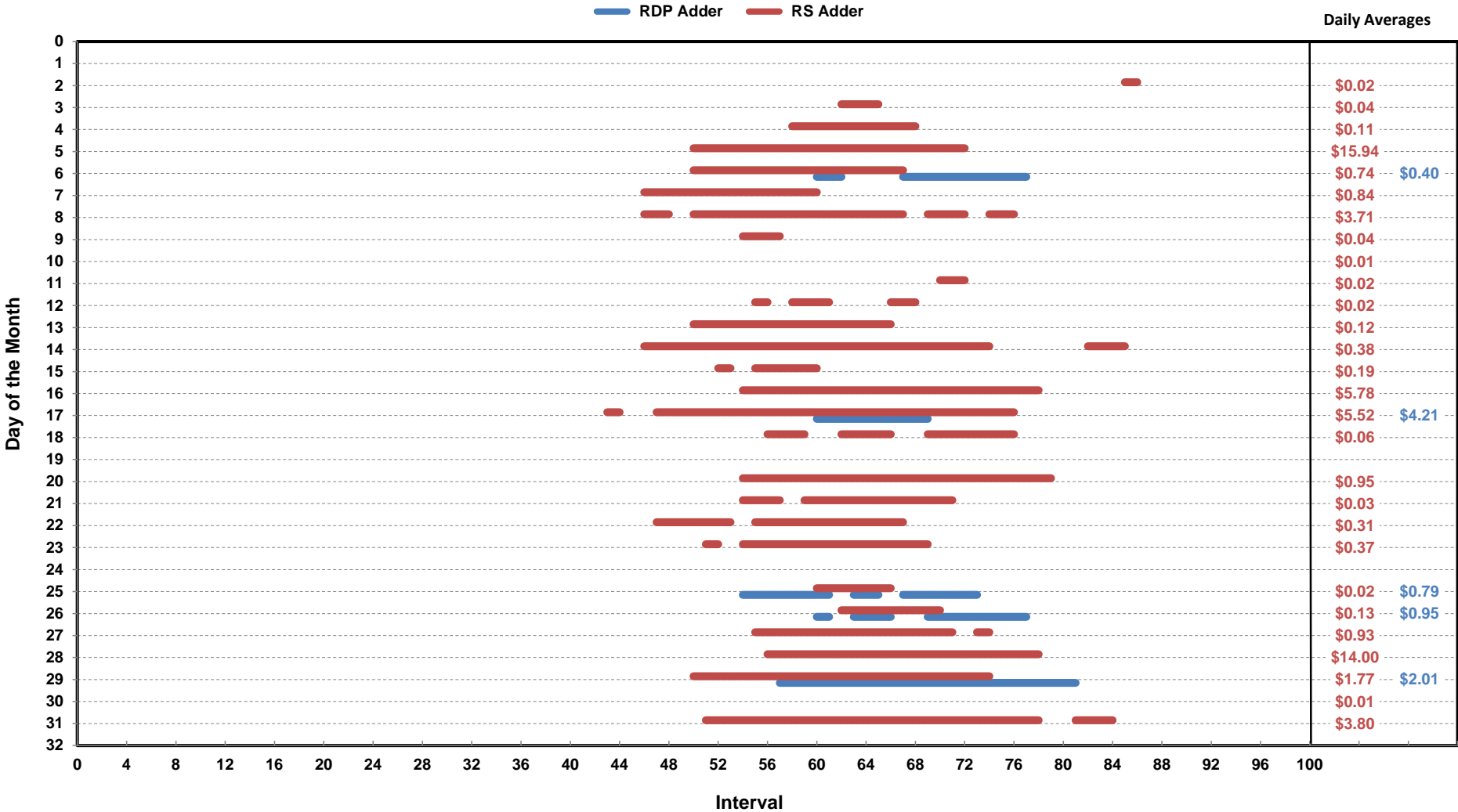
[previous <<](#)

[next >>](#)

[data](#)

**Note:** \* Zonal load zone definition vs. Nodal comparable load zone definition: LZ\_Houston=LZ\_Houston; LZ\_West=LZ\_West; LZ\_North=(LZ\_North,LZ\_RAYBN); LZ\_South=(LZ\_South,LZ\_CPS,LZ\_AEN,LZ\_LCRA)

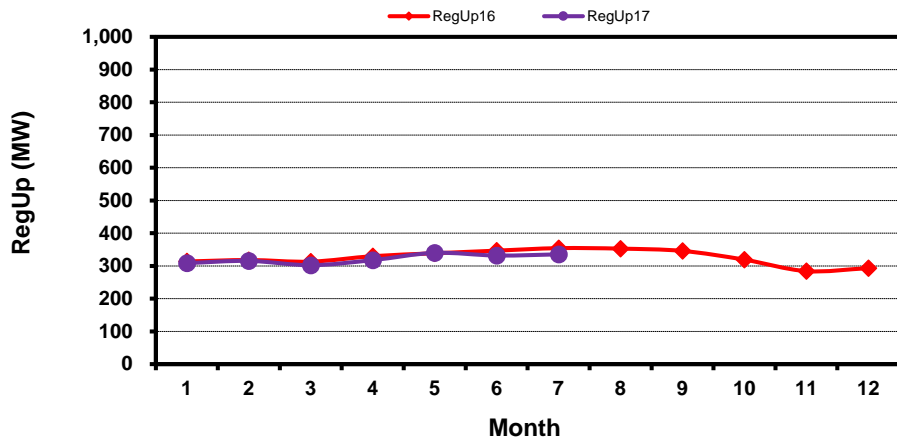
# Daily ORDC Adders Average Values and Interval Duration Jul-2017



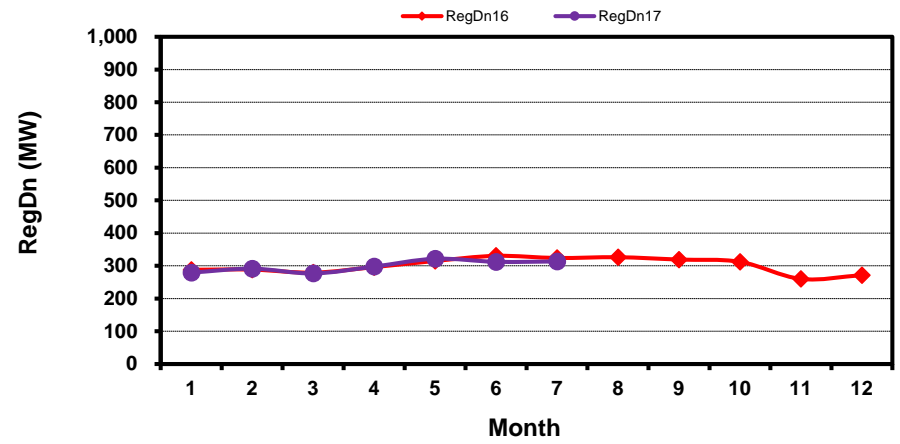
[Home <<](#)     
 [previous <<](#)     
 [next >>](#)  
[data](#)

# Monthly Average of Ancillary Services Required MW

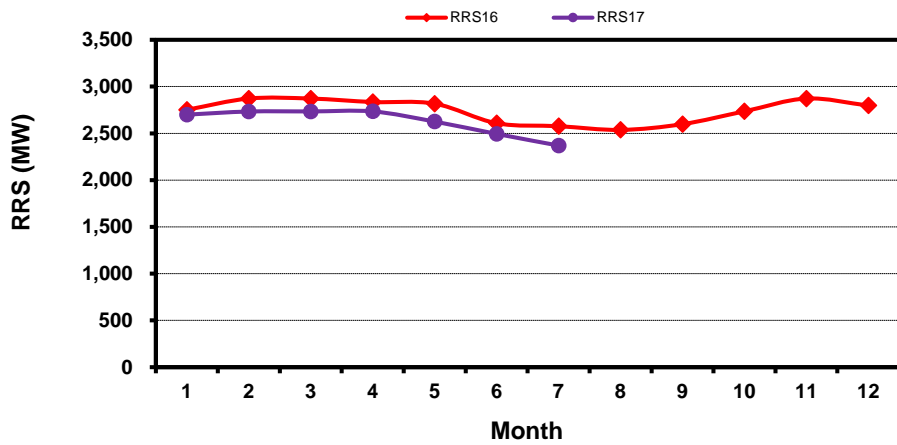
## Regulation Up



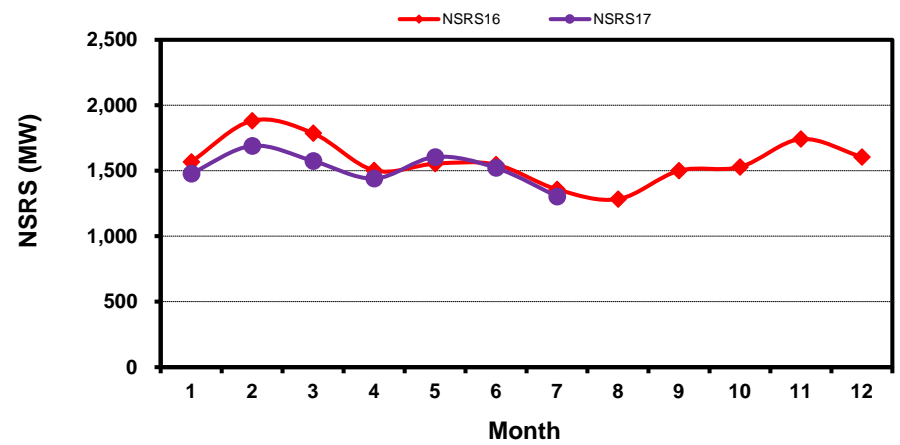
## Regulation Down



## Responsive Reserve



## Non-Spin Reserve



[Home <<](#)

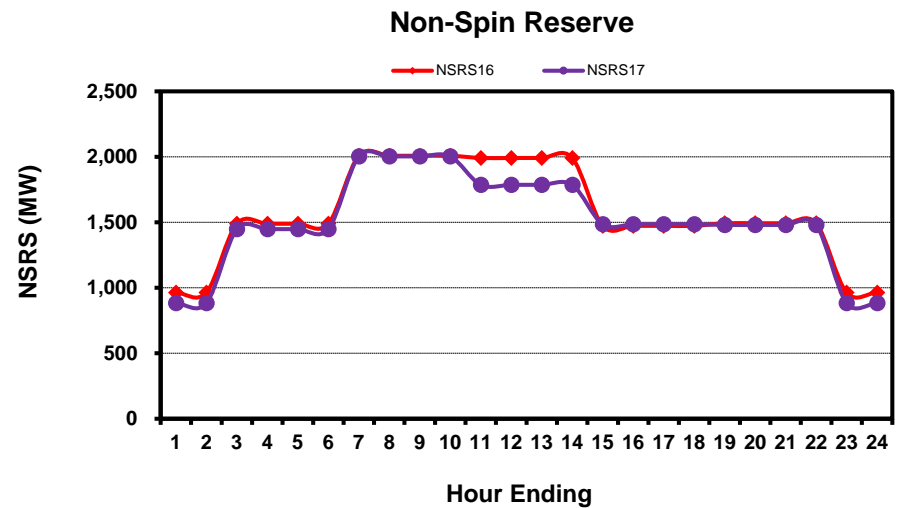
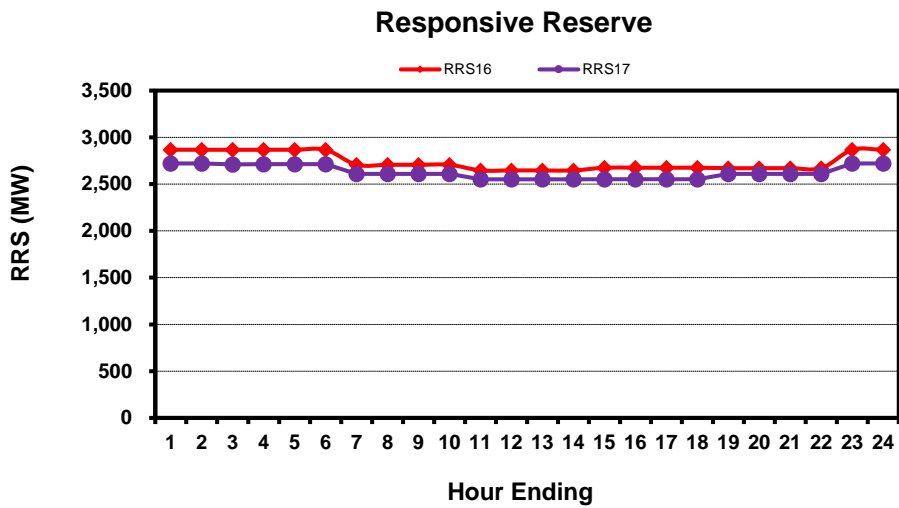
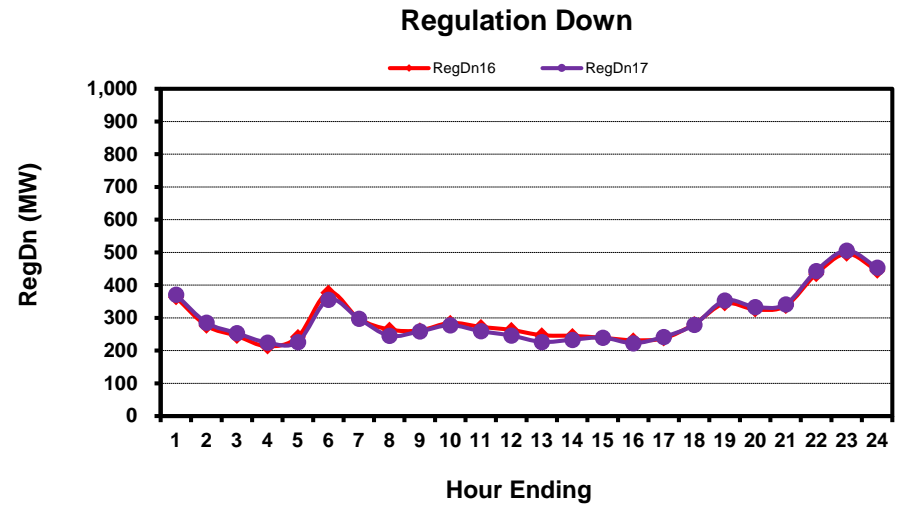
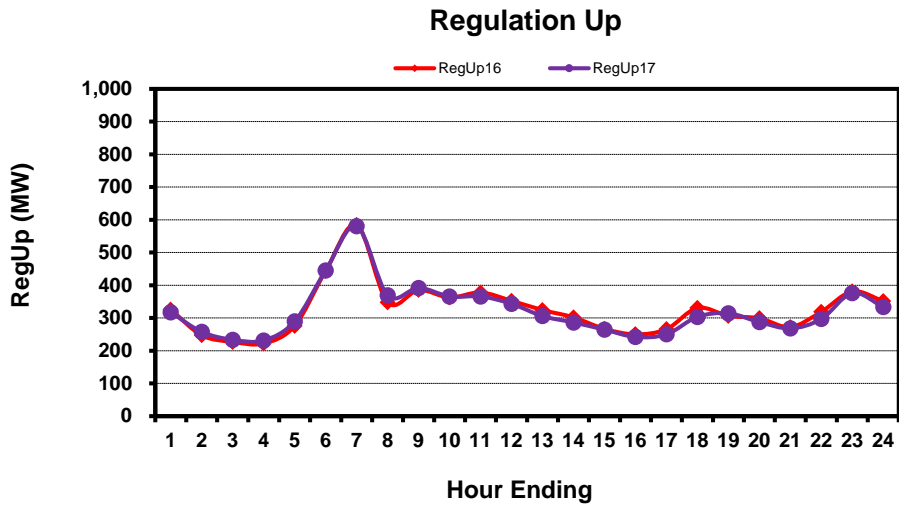
[previous <<](#)

[next >>](#)

[data](#)



# Hourly Average of Ancillary Services Required MW



[Home <<](#)

[previous <<](#)

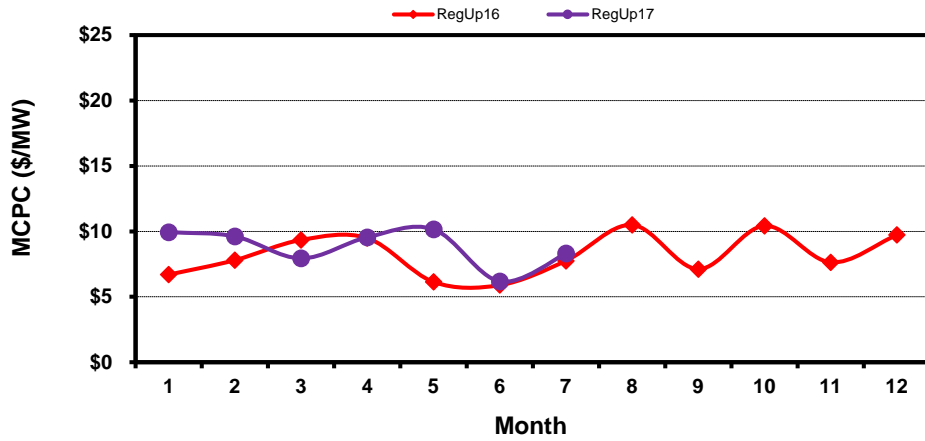
[next >>](#)

[data](#)

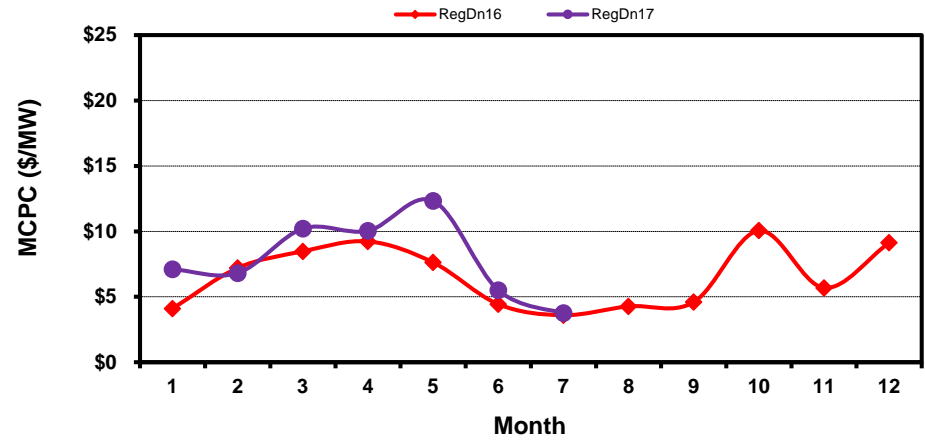
# Monthly Average Ancillary Services Price

(weighted by A/S Quantities Required)

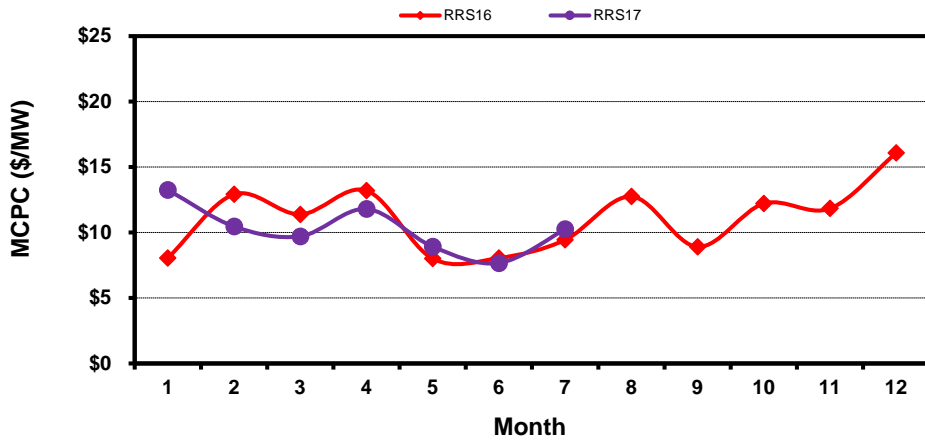
### Regulation Up



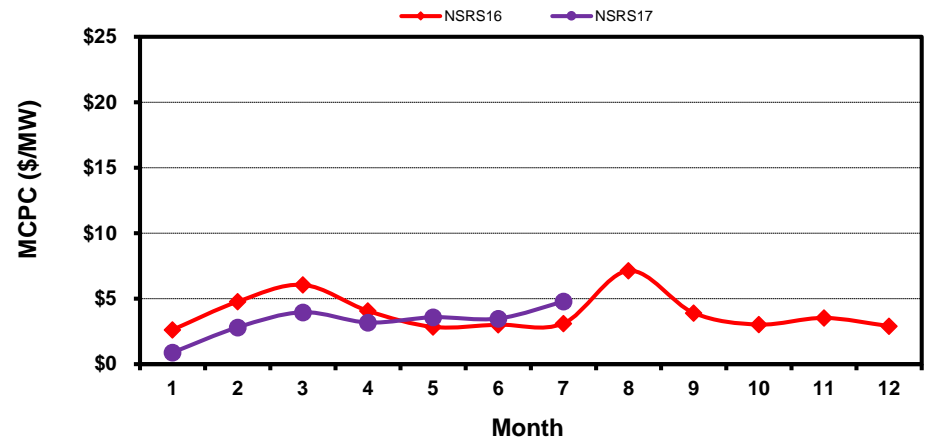
### Regulation Down



### Responsive Reserve



### Non-Spin Reserve



[Home <<](#)

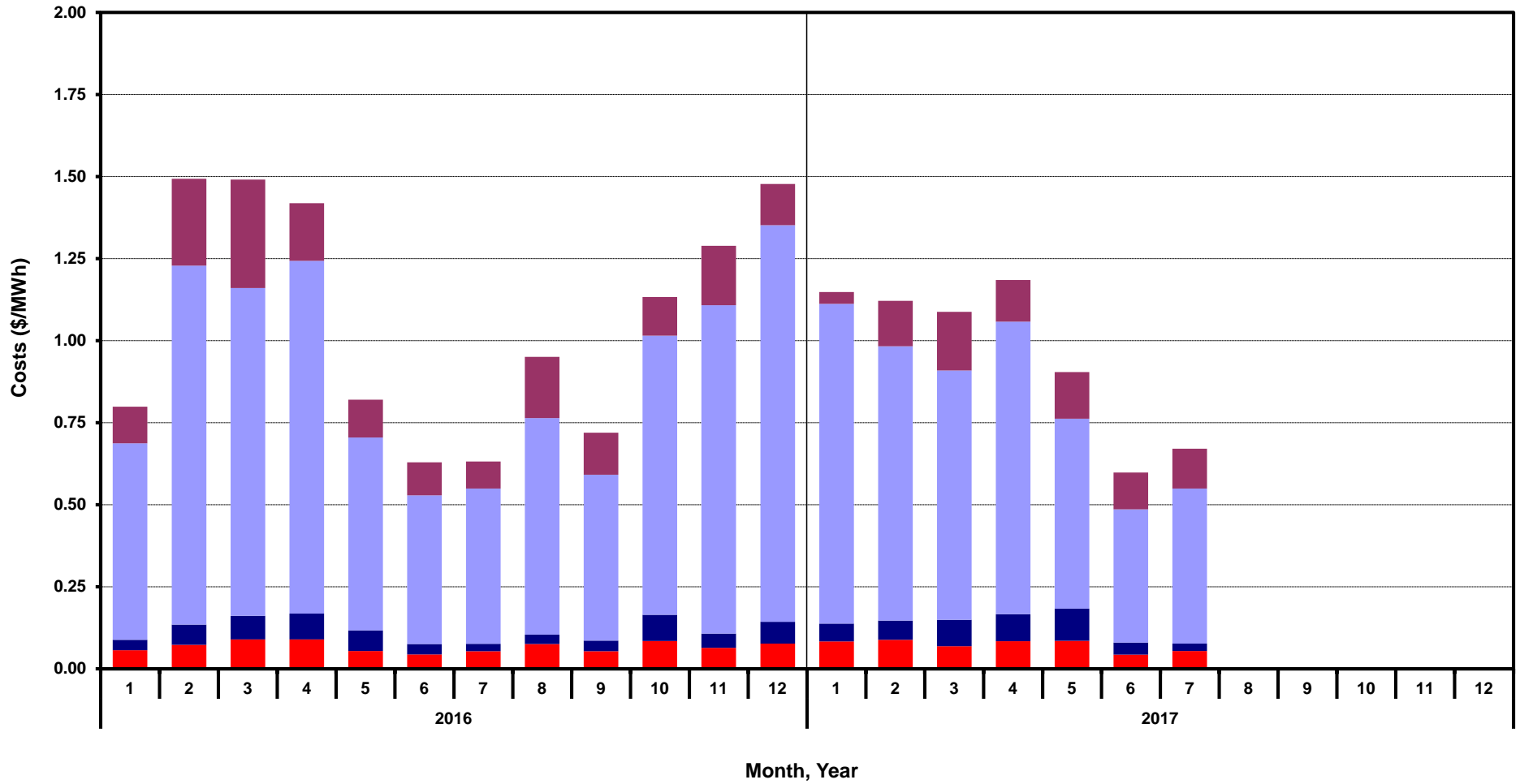
[previous <<](#)

[next >>](#)

[data](#)

# Monthly Average A/S Cost per MWh Load

RegUp RegDn RRS NonSpin



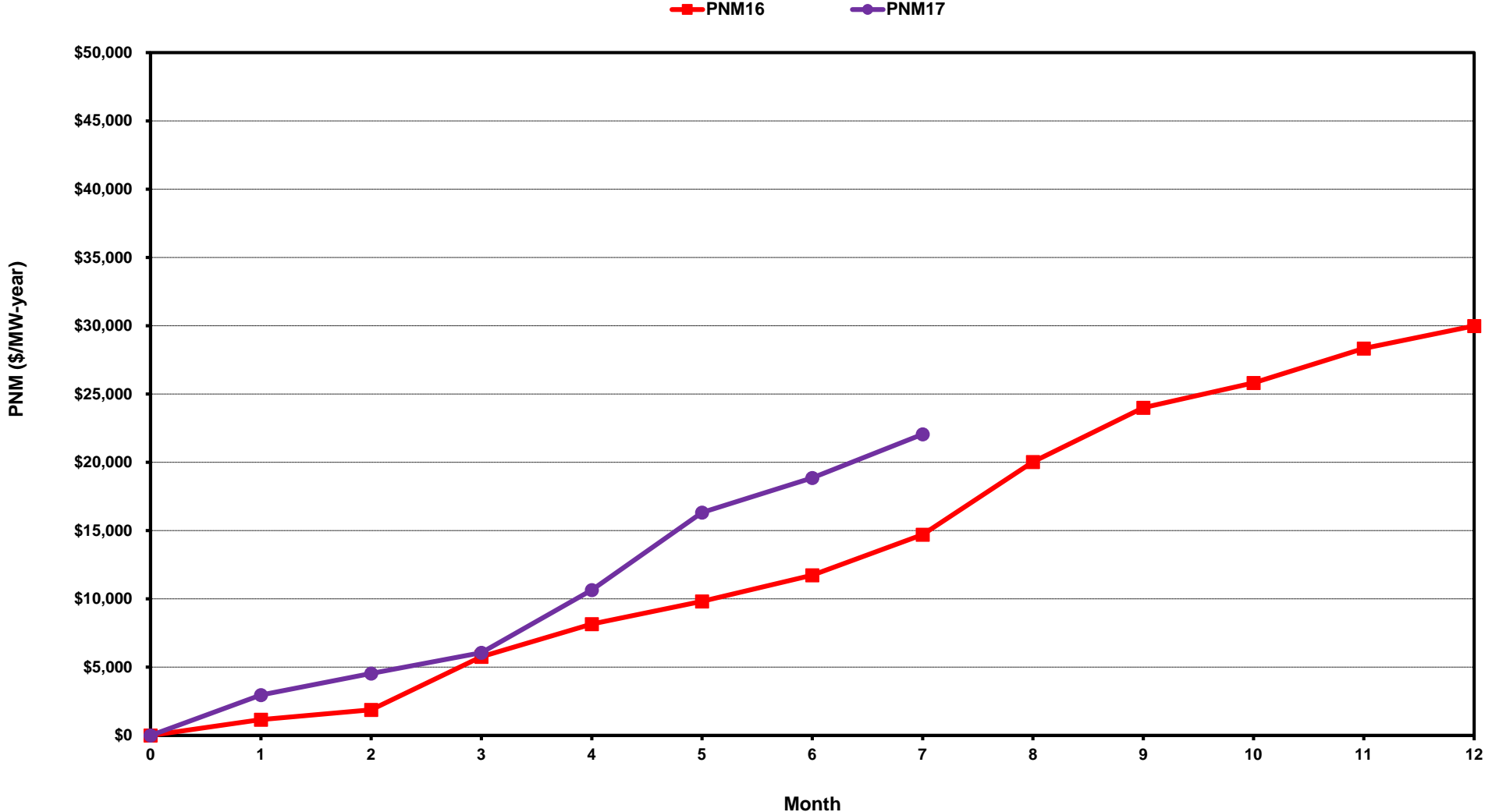
[Home <<](#)

[previous <<](#)

[next >>](#)

[data](#)

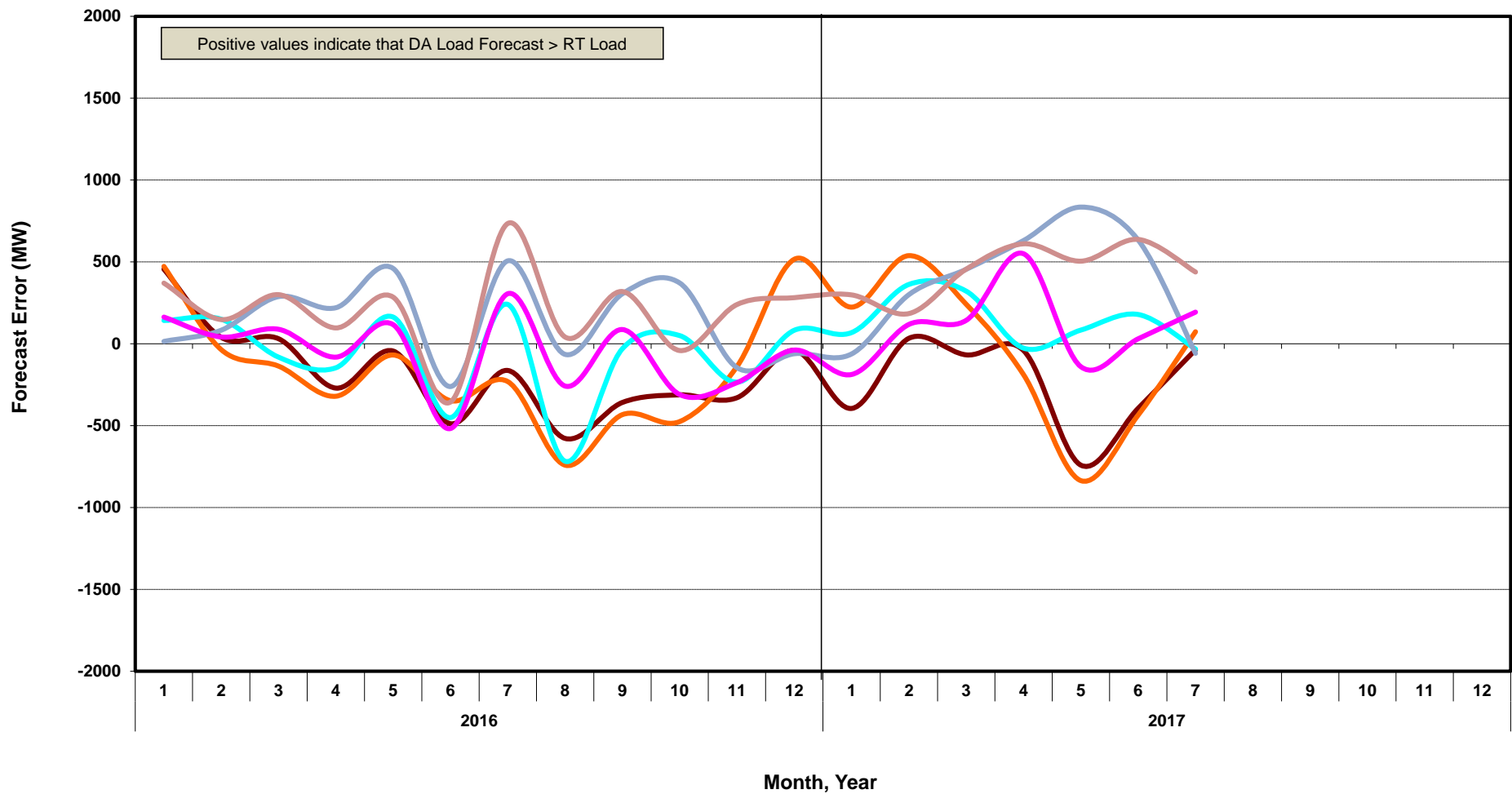
# ERCOT-wide Cumulative Peaker Net Margin



[Home <<](#)      [previous <<](#)      [next >>](#)  
[data](#)

# DA vs. RT Load Forecast Error by Hour Ending

HE\_1\_4   HE\_5\_8   HE\_9\_12   HE\_13\_16   HE\_17\_20   HE\_21\_24



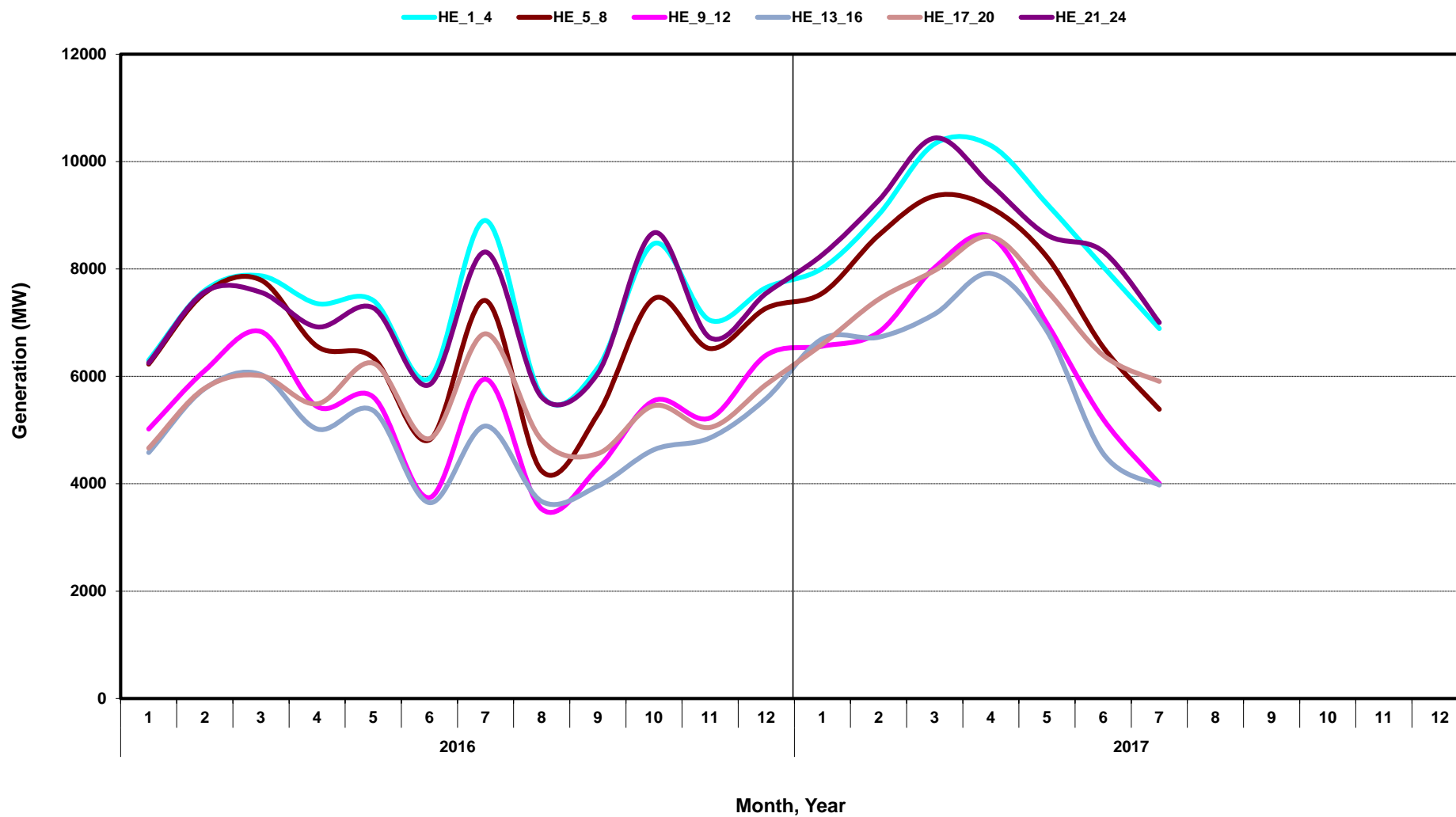
[Home <<](#)

[previous <<](#)

[next >>](#)

[data](#)

# Monthly Average of Wind Generation by Hour Ending



[Home <<](#)

[previous <<](#)

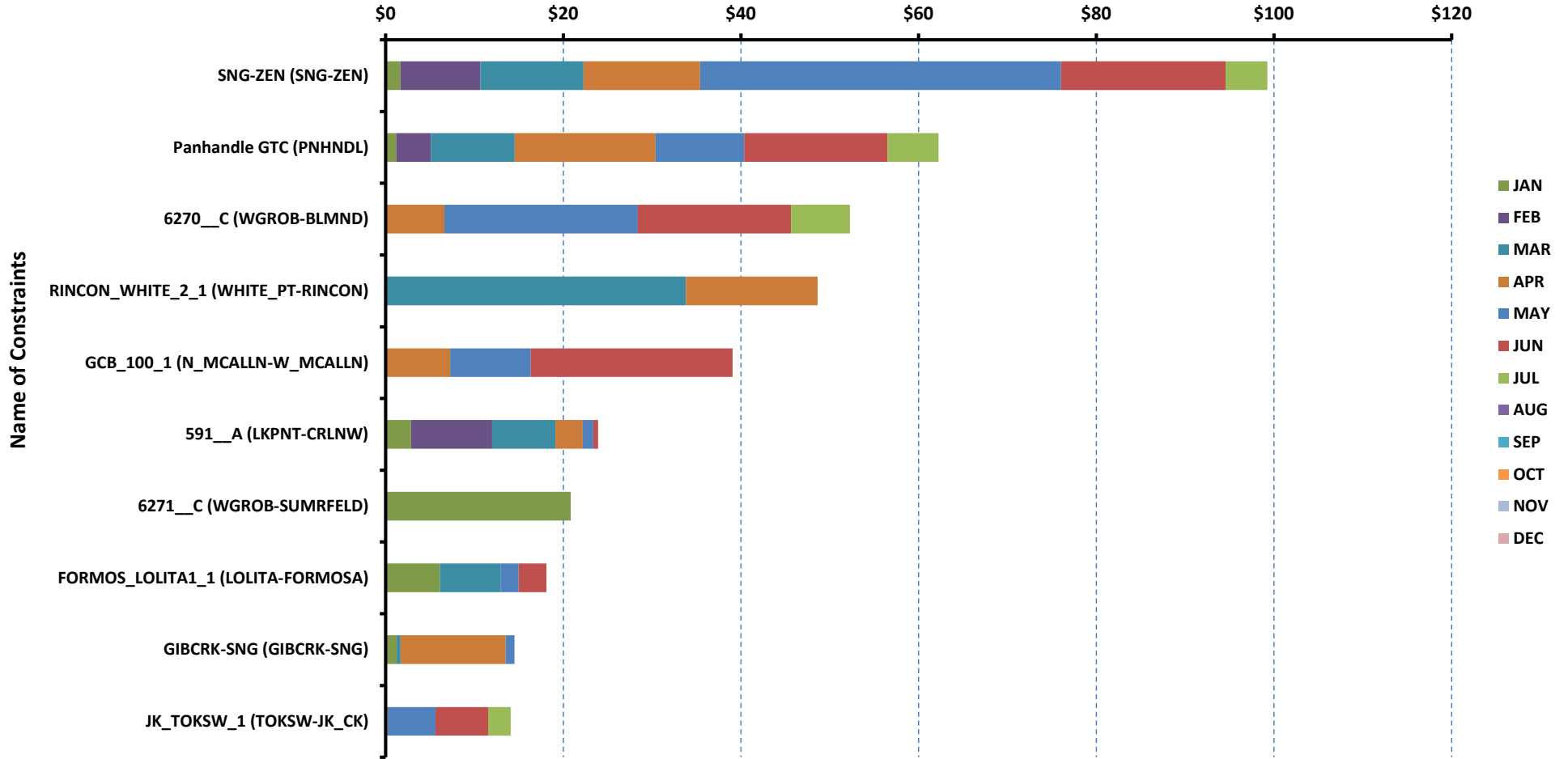
[next >>](#)

[data](#)

# RT Congestion Constraint Rankings - 1

## Top 10 Constraints by Total Congestion Value

Congestion Rent in \$ million



[Home <<](#)

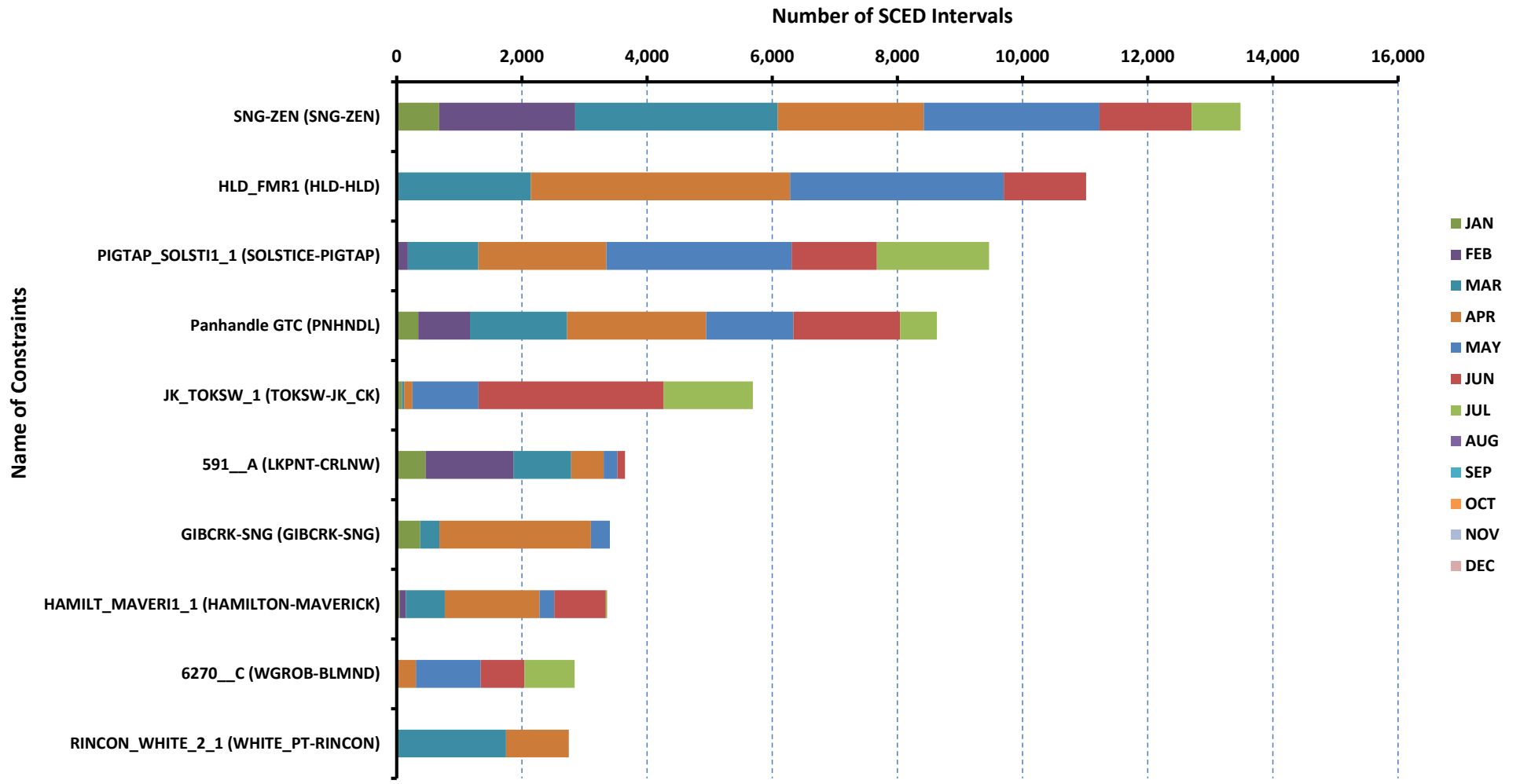
[previous <<](#)

[next >>](#)

[data](#)

# RT Congestion Constraint Rankings - 2

## Top 10 Constraints by Binding Frequency



[Home <<](#)

[previous <<](#)

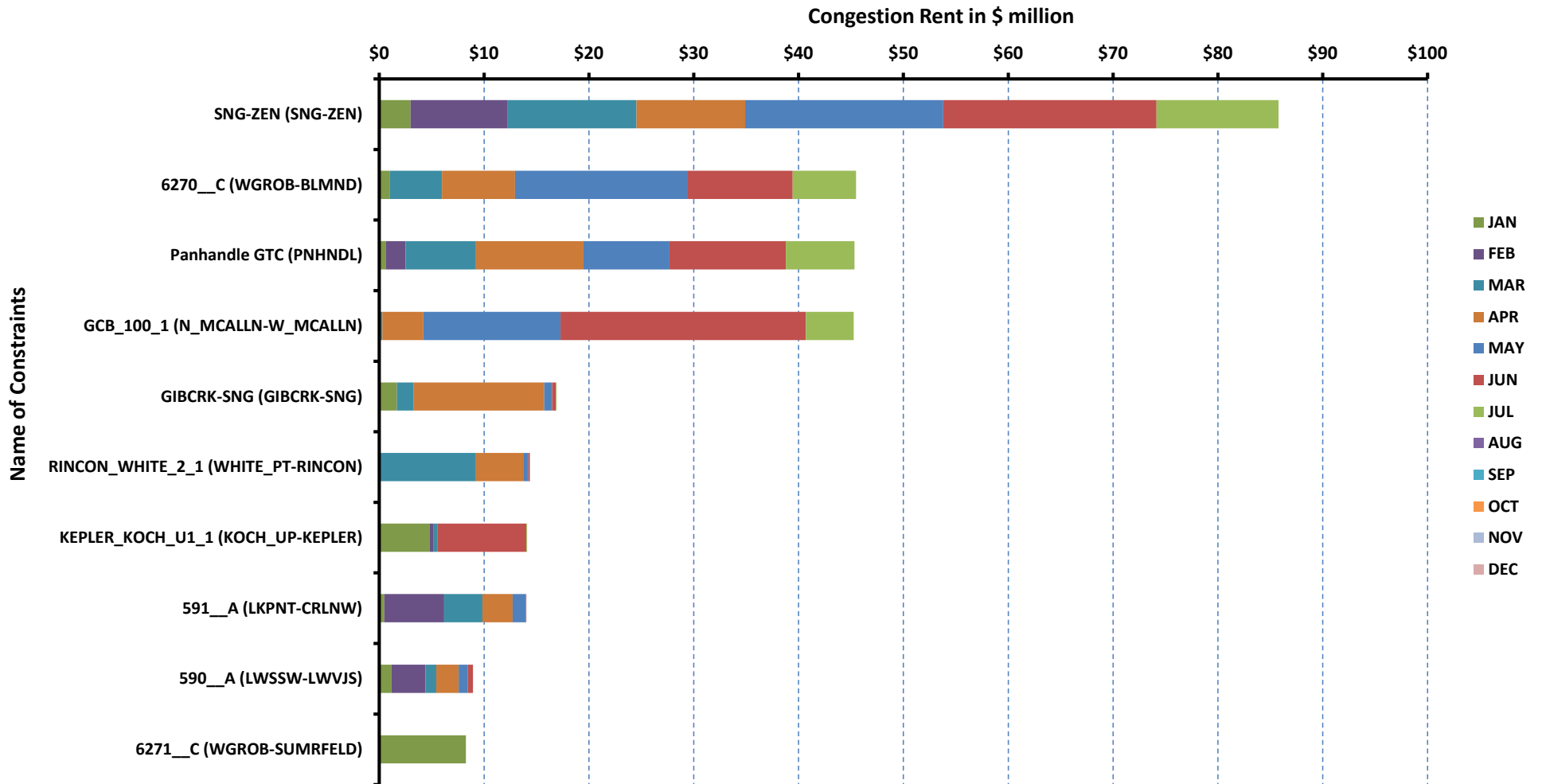
[next >>](#)

[data](#)



# DA Congestion Constraint Rankings - 1

## Top 10 Constraints by Total Congestion Value



[Home <<](#)

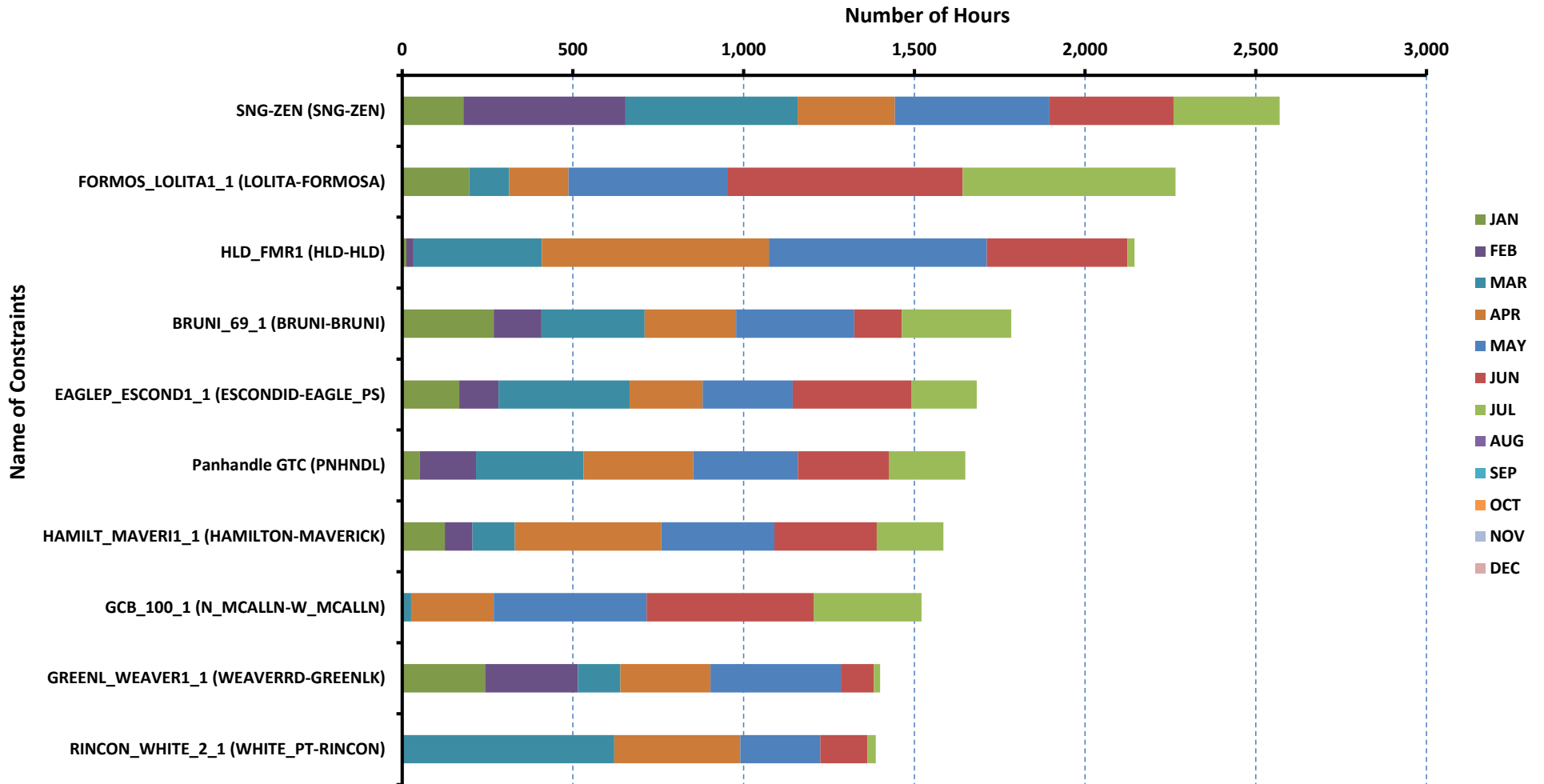
[previous <<](#)

[next >>](#)

[data](#)

# DA Congestion Constraint Rankings - 2

## Top 10 Constraints by Binding Frequency



[Home <<](#)

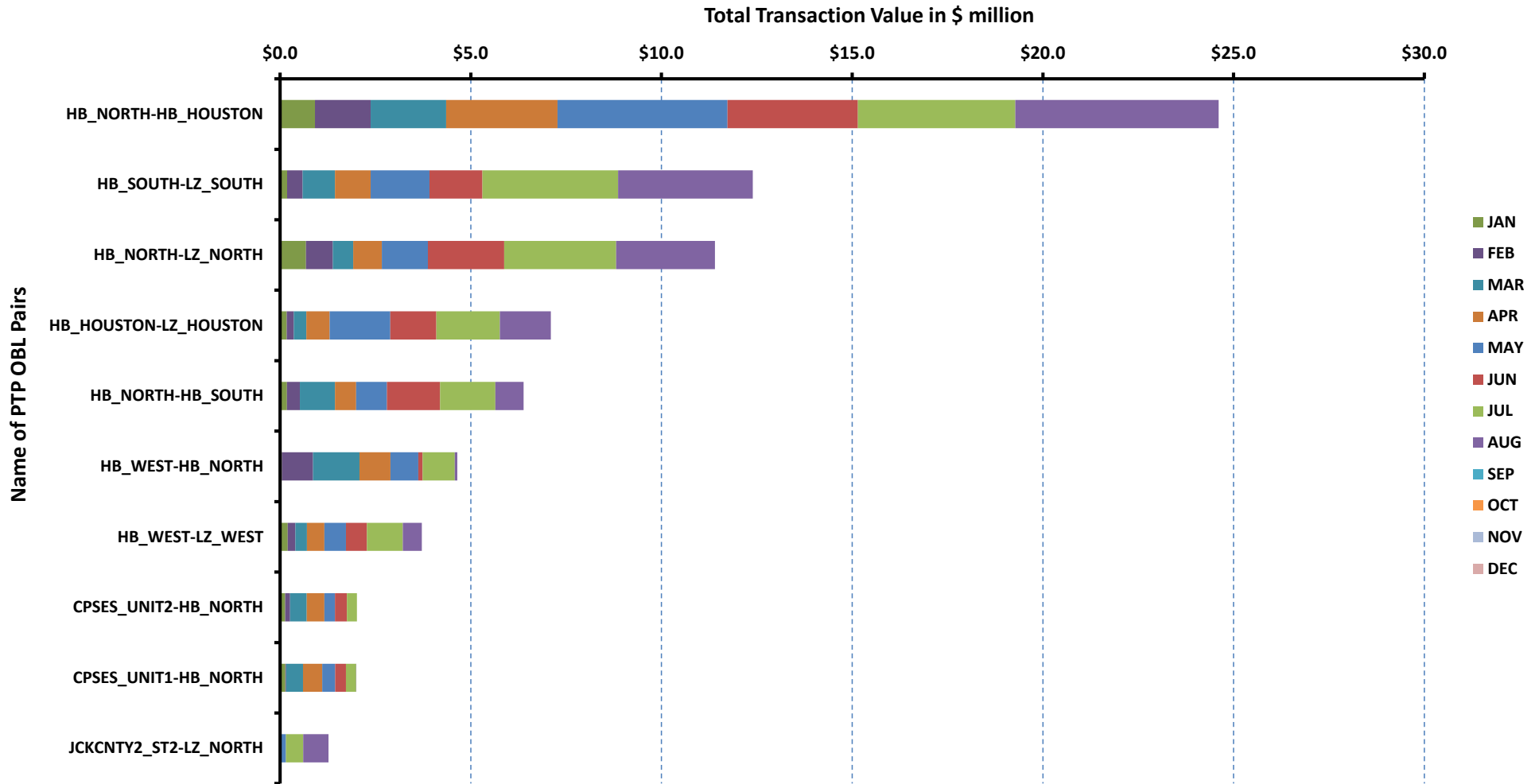
[previous <<](#)

[next >>](#)

[data](#)

# Top 10 CRR Pairs Ranked by Monthly Auction Values - 1

## Top 10 PTP Obligations by Total Transaction Value



[Home <<](#)

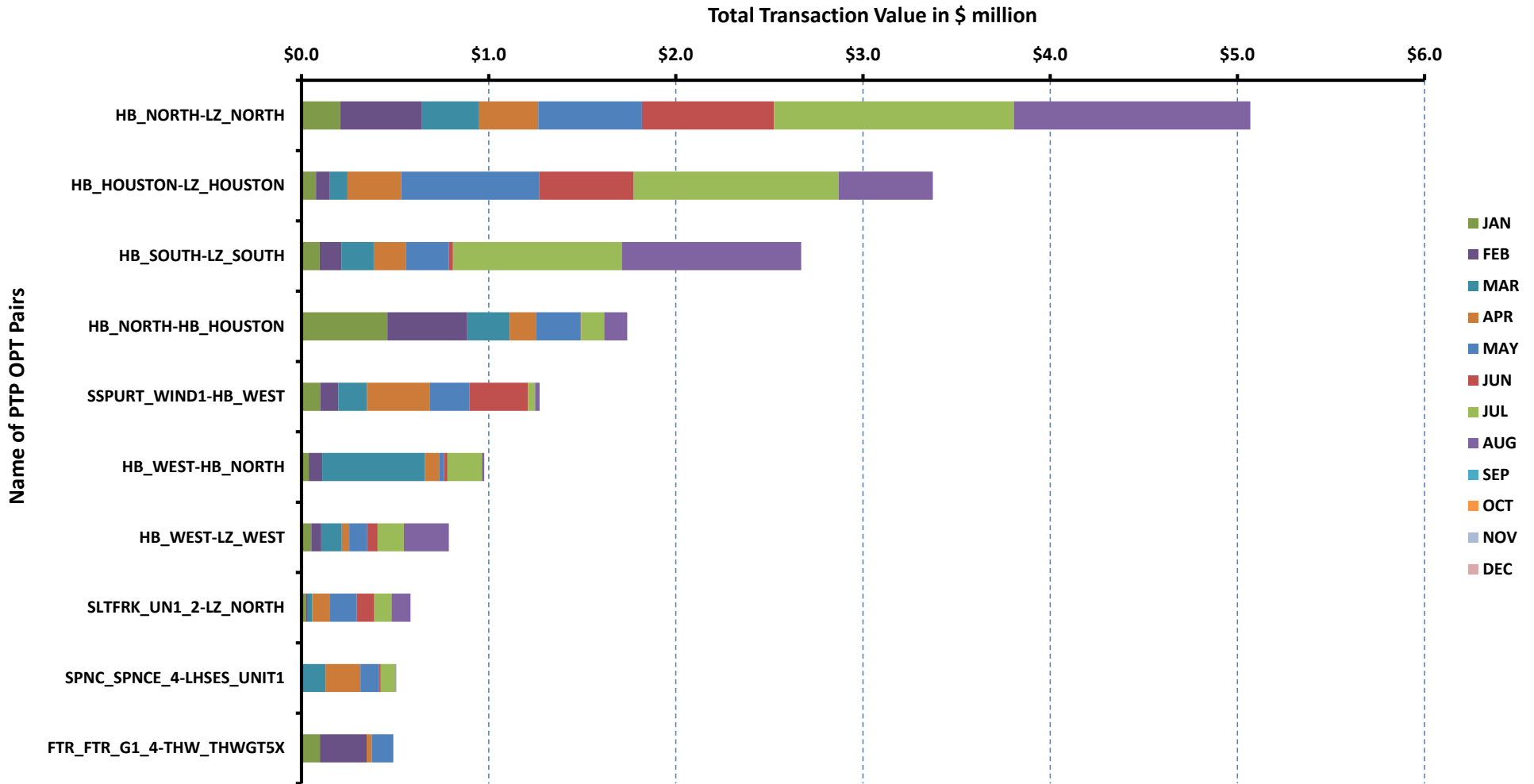
[previous <<](#)

[next >>](#)

[data](#)

# Top 10 CRR Pairs Ranked by Monthly Auction Values - 2

## Top 10 PTP Options by Total Transaction Value



[Home <<](#)

[previous <<](#)

[next >>](#)

[data](#)

ERCOT-wide Avg. Energy Price - DA vs. RT			
year	month	dam_spp	rtm_spp
2016	1	\$ 19.85	\$ 18.96
	2	\$ 16.00	\$ 15.54
	3	\$ 18.18	\$ 20.30
	4	\$ 20.34	\$ 19.98
	5	\$ 20.28	\$ 19.52
	6	\$ 28.27	\$ 26.23
	7	\$ 30.31	\$ 28.06
	8	\$ 35.17	\$ 33.47
	9	\$ 29.90	\$ 31.20
	10	\$ 29.07	\$ 26.58
	11	\$ 20.59	\$ 23.08
	12	\$ 26.80	\$ 24.33
2017	1	\$ 25.01	\$ 26.30
	2	\$ 21.70	\$ 21.57
	3	\$ 25.62	\$ 23.14
	4	\$ 27.56	\$ 30.40
	5	\$ 29.12	\$ 35.47
	6	\$ 32.64	\$ 31.46
	7	\$ 35.16	\$ 31.32
	8	\$ -	\$ -
	9	\$ -	\$ -
	10	\$ -	\$ -
	11	\$ -	\$ -
	12	\$ -	\$ -

[Home <<](#)

[previous <<](#)

[next >>](#)

[chart](#)

Load Zone Load Statistics									
year	month	loadPEAK_Houston	loadPEAK_North	loadPEAK_South	loadPEAK_West	loadAVG_Houston	loadAVG_North	loadAVG_South	loadAVG_West
2016	1	11,996	19,817	14,745	4,154	9,367	14,160	9,958	3,525
	2	11,378	19,345	14,062	4,194	9,027	12,473	9,085	3,318
	3	13,434	16,410	12,996	3,667	9,184	11,447	8,934	3,177
	4	14,666	18,506	14,780	4,007	9,890	12,058	9,634	3,239
	5	16,608	21,991	15,871	4,520	11,044	13,212	10,679	3,423
	6	17,981	25,275	17,724	4,876	12,627	17,254	12,696	3,795
	7	18,366	26,373	19,056	5,146	13,866	19,237	14,083	4,192
	8	18,920	28,134	19,726	5,173	13,285	18,380	13,383	3,975
	9	18,008	26,088	18,339	4,783	12,650	16,767	12,651	3,698
	10	16,500	22,643	16,722	4,457	11,209	13,756	10,856	3,472
	11	14,053	18,396	14,574	4,132	9,533	11,857	9,264	3,330
	12	12,783	24,181	16,662	4,523	9,606	14,071	9,886	3,654
2017	1	13,640	24,641	17,476	4,693	9,533	13,862	9,650	3,682
	2	13,074	17,382	12,185	4,263	9,319	12,281	9,105	3,516
	3	14,353	17,152	13,478	4,237	9,894	12,147	9,428	3,485
	4	15,401	18,155	16,198	4,365	10,161	12,431	10,079	3,523
	5	16,072	23,036	16,831	4,913	11,301	14,083	11,342	3,733
	6	17,802	25,826	19,128	5,383	12,942	16,844	13,175	4,164
	7	18,690	27,132	19,184	5,284	14,008	19,022	14,194	4,290
	8	-	-	-	-	-	-	-	-
	9	-	-	-	-	-	-	-	-
	10	-	-	-	-	-	-	-	-
	11	-	-	-	-	-	-	-	-
	12	-	-	-	-	-	-	-	-

[Home <<](#)

[previous <<](#)

[next >>](#)

[chart](#)

Load Zone Monthly Average Energy Price - DA vs. RT									
year	month	avgRTMp_Houston	avgRTMp_North	avgRTMp_South	avgRTMp_West	avgDAMp_Houston	avgDAMp_North	avgDAMp_South	avgDAMp_West
2016	1	\$ 18.68	\$ 18.77	\$ 19.69	\$ 18.39	\$ 19.93	\$ 19.74	\$ 19.95	\$ 19.76
	2	\$ 15.20	\$ 15.84	\$ 15.89	\$ 14.35	\$ 15.89	\$ 16.05	\$ 16.30	\$ 15.28
	3	\$ 20.31	\$ 19.22	\$ 22.84	\$ 17.04	\$ 17.95	\$ 18.12	\$ 19.22	\$ 16.18
	4	\$ 20.32	\$ 20.84	\$ 19.79	\$ 16.22	\$ 20.39	\$ 20.35	\$ 21.20	\$ 17.56
	5	\$ 21.52	\$ 18.32	\$ 19.82	\$ 16.75	\$ 21.33	\$ 19.38	\$ 20.92	\$ 18.32
	6	\$ 32.12	\$ 24.08	\$ 24.42	\$ 22.53	\$ 33.15	\$ 25.64	\$ 28.08	\$ 24.60
	7	\$ 28.55	\$ 28.07	\$ 28.10	\$ 26.26	\$ 32.03	\$ 29.41	\$ 30.40	\$ 28.41
	8	\$ 36.96	\$ 32.41	\$ 32.61	\$ 29.64	\$ 37.68	\$ 34.06	\$ 35.13	\$ 32.05
	9	\$ 35.54	\$ 29.45	\$ 30.02	\$ 28.34	\$ 31.27	\$ 28.97	\$ 30.34	\$ 27.94
	10	\$ 27.27	\$ 25.14	\$ 27.77	\$ 26.33	\$ 31.14	\$ 26.70	\$ 30.86	\$ 26.15
	11	\$ 24.43	\$ 20.73	\$ 25.25	\$ 21.51	\$ 21.33	\$ 19.50	\$ 21.58	\$ 19.65
	12	\$ 24.59	\$ 24.51	\$ 24.28	\$ 23.11	\$ 26.55	\$ 26.66	\$ 27.66	\$ 25.67
2017	1	\$ 25.97	\$ 27.15	\$ 25.69	\$ 25.52	\$ 25.45	\$ 24.65	\$ 25.65	\$ 23.62
	2	\$ 24.14	\$ 19.84	\$ 22.42	\$ 18.59	\$ 24.48	\$ 20.12	\$ 22.10	\$ 18.81
	3	\$ 27.46	\$ 20.23	\$ 24.18	\$ 18.15	\$ 30.61	\$ 22.53	\$ 26.24	\$ 20.54
	4	\$ 41.17	\$ 23.37	\$ 31.21	\$ 21.81	\$ 35.06	\$ 22.79	\$ 28.27	\$ 20.73
	5	\$ 46.15	\$ 29.05	\$ 36.05	\$ 25.54	\$ 34.55	\$ 25.91	\$ 29.64	\$ 23.27
	6	\$ 34.86	\$ 27.27	\$ 34.65	\$ 27.77	\$ 36.19	\$ 28.63	\$ 35.59	\$ 28.49
	7	\$ 32.46	\$ 30.99	\$ 31.23	\$ 29.35	\$ 37.47	\$ 33.74	\$ 35.58	\$ 32.50
	8	\$ -	\$ -	\$ -	\$ -	\$ -	\$ -	\$ -	\$ -
	9	\$ -	\$ -	\$ -	\$ -	\$ -	\$ -	\$ -	\$ -
	10	\$ -	\$ -	\$ -	\$ -	\$ -	\$ -	\$ -	\$ -
	11	\$ -	\$ -	\$ -	\$ -	\$ -	\$ -	\$ -	\$ -
	12	\$ -	\$ -	\$ -	\$ -	\$ -	\$ -	\$ -	\$ -

[Home <<](#)

[previous <<](#)

[next >>](#)

[chart](#)

ERCOT-wide Monthly Implied Heat Rate - DA vs. RT						
year	month	gasprice	rtn_spp	HR_rtn	dam_spp	HR_dam
2016	1	\$ 2.21	\$ 18.96	8.58	\$ 19.85	8.98
	2	\$ 1.89	\$ 15.54	8.22	\$ 16.00	8.46
	3	\$ 1.67	\$ 20.30	12.13	\$ 18.18	10.86
	4	\$ 1.86	\$ 19.98	10.73	\$ 20.34	10.92
	5	\$ 1.85	\$ 19.52	10.52	\$ 20.28	10.93
	6	\$ 2.46	\$ 26.23	10.69	\$ 28.27	11.51
	7	\$ 2.71	\$ 28.06	10.36	\$ 30.31	11.19
	8	\$ 2.73	\$ 33.47	12.24	\$ 35.17	12.86
	9	\$ 2.93	\$ 31.20	10.66	\$ 29.90	10.21
	10	\$ 3.08	\$ 26.58	8.63	\$ 29.07	9.44
	11	\$ 2.47	\$ 23.08	9.34	\$ 20.59	8.34
	12	\$ 3.47	\$ 24.33	7.00	\$ 26.80	7.72
2017	1	\$ 3.22	\$ 26.30	8.16	\$ 25.01	7.76
	2	\$ 2.78	\$ 21.57	7.75	\$ 21.70	7.80
	3	\$ 2.88	\$ 23.14	8.04	\$ 25.62	8.90
	4	\$ 3.12	\$ 30.40	9.75	\$ 27.56	8.84
	5	\$ 3.24	\$ 35.47	10.94	\$ 29.12	8.99
	6	\$ 3.05	\$ 31.46	10.30	\$ 32.64	10.69
	7	\$ 2.97	\$ 31.32	10.56	\$ 35.16	11.85
	8	\$ -	\$ -	-	\$ -	-
	9	\$ -	\$ -	-	\$ -	-
	10	\$ -	\$ -	-	\$ -	-
	11	\$ -	\$ -	-	\$ -	-
	12	\$ -	\$ -	-	\$ -	-

[Home <<](#)

[previous <<](#)

[next >>](#)

[chart](#)



Load Zone Monthly Implied Heat Rate - DA vs. RT									
year	month	HRdam_Houston	HRdam_South	HRdam_North	HRdam_West	HRrtm_Houston	HRrtm_South	HRrtm_North	HRrtm_West
2016	1	9.02	9.02	8.93	8.94	8.45	8.91	8.49	8.32
	2	8.41	8.62	8.49	8.08	8.04	8.41	8.38	7.59
	3	10.73	11.48	10.82	9.67	12.13	13.65	11.48	10.18
	4	10.95	11.39	10.93	9.43	10.92	10.63	11.20	8.71
	5	11.50	11.28	10.45	9.88	11.60	10.68	9.88	9.03
	6	13.50	11.44	10.44	10.02	13.08	9.95	9.81	9.18
	7	11.83	11.23	10.86	10.49	10.55	10.38	10.37	9.70
	8	13.78	12.84	12.45	11.72	13.52	11.92	11.85	10.84
	9	10.68	10.36	9.89	9.54	12.14	10.25	10.06	9.68
	10	10.11	10.02	8.67	8.49	8.86	9.02	8.16	8.55
	11	8.64	8.74	7.89	7.95	9.89	10.22	8.39	8.71
	12	7.64	7.96	7.67	7.39	7.08	6.99	7.06	6.65
2017	1	7.89	7.96	7.65	7.33	8.06	7.97	8.42	7.92
	2	8.80	7.94	7.23	6.76	8.68	8.06	7.13	6.68
	3	10.63	9.12	7.83	7.13	9.54	8.40	7.03	6.30
	4	11.25	9.07	7.31	6.65	13.21	10.01	7.50	7.00
	5	10.66	9.14	7.99	7.18	14.24	11.12	8.96	7.88
	6	11.85	11.66	9.37	9.33	11.42	11.34	8.93	9.09
	7	12.63	11.99	11.38	10.96	10.94	10.53	10.45	9.89
	8	-	-	-	-	-	-	-	-
	9	-	-	-	-	-	-	-	-
	10	-	-	-	-	-	-	-	-
	11	-	-	-	-	-	-	-	-
	12	-	-	-	-	-	-	-	-

[Home <<](#)

[previous <<](#)

[next >>](#)

[chart](#)

Daily ORDC Adders Average Values and Interval Duration								
YEAR	MONTH	DAY	PRICE_RS	PRICE_RDP	RS_CNT	RDP_CNT	RS_POS	RDP_POS
2017	7	1	\$ -	\$ -	0	0	80	90
2017	7	2	\$ 0.02	\$ -	2	0	80	90
2017	7	3	\$ 0.04	\$ -	4	0	80	90
2017	7	4	\$ 0.11	\$ -	11	0	80	90
2017	7	5	\$ 15.94	\$ -	23	0	80	90
2017	7	6	\$ 0.74	\$ 0.40	19	15	80	90
2017	7	7	\$ 0.84	\$ -	16	0	80	90
2017	7	8	\$ 3.71	\$ -	28	0	80	90
2017	7	9	\$ 0.04	\$ -	4	0	80	90
2017	7	10	\$ 0.01	\$ -	1	0	80	90
2017	7	11	\$ 0.02	\$ -	4	0	80	90
2017	7	12	\$ 0.02	\$ -	9	0	80	90
2017	7	13	\$ 0.12	\$ -	19	0	80	90
2017	7	14	\$ 0.38	\$ -	36	0	80	90
2017	7	15	\$ 0.19	\$ -	8	0	80	90
2017	7	16	\$ 5.78	\$ -	26	0	80	90
2017	7	17	\$ 5.52	\$ 4.21	32	10	80	90
2017	7	18	\$ 0.06	\$ -	17	0	80	90
2017	7	19	\$ -	\$ -	0	0	80	90
2017	7	20	\$ 0.95	\$ -	26	0	80	90
2017	7	21	\$ 0.03	\$ -	17	0	80	90
2017	7	22	\$ 0.31	\$ -	20	0	80	90
2017	7	23	\$ 0.37	\$ -	18	0	80	90
2017	7	24	\$ -	\$ -	0	0	80	90
2017	7	25	\$ 0.02	\$ 0.79	7	19	80	90
2017	7	26	\$ 0.13	\$ 0.95	10	16	80	90
2017	7	27	\$ 0.93	\$ -	19	0	80	90
2017	7	28	\$ 14.00	\$ -	23	0	80	90
2017	7	29	\$ 1.77	\$ 2.01	27	25	80	90
2017	7	30	\$ 0.01	\$ -	1	0	80	90
2017	7	31	\$ 3.80	\$ -	32	0	80	90

[Home <<](#)

[previous <<](#)

[next >>](#)

[chart](#)

Monthly Average of Ancillary Services Required MW					
year	month	ASMW_REGDN	ASMW_NSPIN	ASMW_RRS	ASMW_REGUP
2016	1	288	1,568	2,752	314
	2	289	1,882	2,872	318
	3	279	1,787	2,872	313
	4	296	1,503	2,835	330
	5	315	1,554	2,817	339
	6	331	1,547	2,608	347
	7	324	1,358	2,577	354
	8	326	1,283	2,537	353
	9	319	1,500	2,598	346
	10	312	1,529	2,735	319
	11	260	1,742	2,872	284
	12	272	1,605	2,797	293
2017	1	279	1,479	2,700	309
	2	291	1,690	2,733	315
	3	277	1,575	2,734	302
	4	298	1,441	2,734	318
	5	322	1,605	2,626	340
	6	312	1,522	2,494	332
	7	314	1,304	2,370	335
	8	-	-	-	-
	9	-	-	-	-
	10	-	-	-	-
	11	-	-	-	-
	12	-	-	-	-

[Home <<](#)

[previous <<](#)

[next >>](#)

[chart](#)

Hourly Average of Ancillary Services Required MW					
year	DELIVERY_HOUR	ASMW_REGDN	ASMW_NSPIN	ASMW_RRS	ASMW_REGUP
2016	1	363	964	2,867	325
	2	276	964	2,867	247
	3	245	1,489	2,867	227
	4	213	1,489	2,867	222
	5	242	1,489	2,867	276
	6	378	1,489	2,867	444
	7	298	2,008	2,706	584
	8	264	2,008	2,706	348
	9	262	2,008	2,706	385
	10	285	2,008	2,706	363
	11	273	1,991	2,646	378
	12	263	1,991	2,646	353
	13	247	1,991	2,646	324
	14	245	1,991	2,646	302
	15	239	1,473	2,675	267
	16	232	1,473	2,675	250
	17	237	1,473	2,675	266
	18	281	1,473	2,675	331
	19	344	1,492	2,670	306
	20	326	1,492	2,670	299
	21	337	1,492	2,670	272
	22	434	1,492	2,670	319
	23	496	964	2,867	381
	24	444	964	2,867	352
2017	1	371	883	2,721	317
	2	286	883	2,721	258
	3	253	1,448	2,712	233
	4	224	1,448	2,712	231
	5	227	1,448	2,712	290
	6	356	1,448	2,712	445
	7	298	2,003	2,609	581
	8	246	2,003	2,609	369
	9	259	2,003	2,609	392
	10	278	2,003	2,609	366
	11	259	1,786	2,551	366
	12	246	1,786	2,551	343
	13	227	1,786	2,551	306
	14	233	1,786	2,551	286
	15	240	1,485	2,553	264
	16	223	1,485	2,553	242
	17	242	1,485	2,553	250
	18	279	1,485	2,553	303
	19	353	1,480	2,609	314
	20	334	1,480	2,609	288
	21	342	1,480	2,609	268
	22	443	1,480	2,609	297
	23	506	883	2,721	376
	24	454	883	2,721	333

[Home <<](#)

[previous <<](#)

[next >>](#)

[chart](#)

Monthly Average Ancillary Services Price					
year	month	MCPC_REGDN	MCPC_NSPIN	MCPC_RRS	MCPC_REGUP
2016	1	\$ 4.10	\$ 2.62	\$ 8.05	\$ 6.69
	2	\$ 7.21	\$ 4.77	\$ 12.91	\$ 7.80
	3	\$ 8.47	\$ 6.06	\$ 11.39	\$ 9.34
	4	\$ 9.23	\$ 4.07	\$ 13.20	\$ 9.48
	5	\$ 7.63	\$ 2.84	\$ 8.01	\$ 6.14
	6	\$ 4.43	\$ 3.02	\$ 8.05	\$ 5.89
	7	\$ 3.59	\$ 3.11	\$ 9.44	\$ 7.75
	8	\$ 4.27	\$ 7.13	\$ 12.75	\$ 10.49
	9	\$ 4.59	\$ 3.91	\$ 8.91	\$ 7.12
	10	\$ 10.06	\$ 3.02	\$ 12.21	\$ 10.42
	11	\$ 5.68	\$ 3.53	\$ 11.84	\$ 7.64
	12	\$ 9.13	\$ 2.91	\$ 16.08	\$ 9.72
2017	1	\$ 7.10	\$ 0.89	\$ 13.26	\$ 9.94
	2	\$ 6.81	\$ 2.81	\$ 10.47	\$ 9.62
	3	\$ 10.21	\$ 3.96	\$ 9.71	\$ 7.94
	4	\$ 10.04	\$ 3.18	\$ 11.80	\$ 9.55
	5	\$ 12.33	\$ 3.58	\$ 8.92	\$ 10.16
	6	\$ 5.50	\$ 3.48	\$ 7.67	\$ 6.18
	7	\$ 3.75	\$ 4.79	\$ 10.27	\$ 8.31
	8	\$ -	\$ -	\$ -	\$ -
	9	\$ -	\$ -	\$ -	\$ -
	10	\$ -	\$ -	\$ -	\$ -
	11	\$ -	\$ -	\$ -	\$ -
	12	\$ -	\$ -	\$ -	\$ -

[Home <<](#)

[previous <<](#)

[next >>](#)

[chart](#)

Monthly Average A/S Cost per MWh Load					
year	month	AScost_REGDN	AScost_NSPIIN	AScost_RRS	AScost_REGUP
2016	1	\$ 0.03	\$ 0.11	\$ 0.60	\$ 0.06
	2	\$ 0.06	\$ 0.26	\$ 1.09	\$ 0.07
	3	\$ 0.07	\$ 0.33	\$ 1.00	\$ 0.09
	4	\$ 0.08	\$ 0.18	\$ 1.07	\$ 0.09
	5	\$ 0.06	\$ 0.12	\$ 0.59	\$ 0.05
	6	\$ 0.03	\$ 0.10	\$ 0.45	\$ 0.04
	7	\$ 0.02	\$ 0.08	\$ 0.47	\$ 0.05
	8	\$ 0.03	\$ 0.19	\$ 0.66	\$ 0.08
	9	\$ 0.03	\$ 0.13	\$ 0.51	\$ 0.05
	10	\$ 0.08	\$ 0.12	\$ 0.85	\$ 0.08
	11	\$ 0.04	\$ 0.18	\$ 1.00	\$ 0.06
	12	\$ 0.07	\$ 0.13	\$ 1.21	\$ 0.08
2017	1	\$ 0.05	\$ 0.04	\$ 0.97	\$ 0.08
	2	\$ 0.06	\$ 0.14	\$ 0.84	\$ 0.09
	3	\$ 0.08	\$ 0.18	\$ 0.76	\$ 0.07
	4	\$ 0.08	\$ 0.13	\$ 0.89	\$ 0.08
	5	\$ 0.10	\$ 0.14	\$ 0.58	\$ 0.09
	6	\$ 0.04	\$ 0.11	\$ 0.41	\$ 0.04
	7	\$ 0.02	\$ 0.12	\$ 0.47	\$ 0.05
	8	\$ -	\$ -	\$ -	\$ -
	9	\$ -	\$ -	\$ -	\$ -
	10	\$ -	\$ -	\$ -	\$ -
	11	\$ -	\$ -	\$ -	\$ -
	12	\$ -	\$ -	\$ -	\$ -

[Home <<](#)

[previous <<](#)

[next >>](#)

[chart](#)

ERCOT-wide Cumulative PNM			
year	month	pnm	pnm_accum
2016	0	\$ -	\$ -
	1	\$ 1,160.69	\$ 1,160.69
	2	\$ 720.57	\$ 1,881.26
	3	\$ 3,883.41	\$ 5,764.67
	4	\$ 2,389.99	\$ 8,154.66
	5	\$ 1,661.50	\$ 9,816.16
	6	\$ 1,922.76	\$ 11,738.92
	7	\$ 2,969.44	\$ 14,708.36
	8	\$ 5,321.18	\$ 20,029.54
	9	\$ 3,967.65	\$ 23,997.19
	10	\$ 1,824.61	\$ 25,821.80
	11	\$ 2,510.79	\$ 28,332.59
	12	\$ 1,658.38	\$ 29,990.97
2017	0	\$ -	\$ -
	1	\$ 2,964.83	\$ 2,964.83
	2	\$ 1,573.68	\$ 4,538.51
	3	\$ 1,520.94	\$ 6,059.45
	4	\$ 4,590.29	\$ 10,649.74
	5	\$ 5,673.67	\$ 16,323.41
	6	\$ 2,542.93	\$ 18,866.34
	7	\$ 3,189.82	\$ 22,056.16
	8	\$ -	\$ -
	9	\$ -	\$ -
	10	\$ -	\$ -
	11	\$ -	\$ -
	12	\$ -	\$ -

[Home <<](#)

[previous <<](#)

[next >>](#)

[chart](#)

DA vs. RT Load Forecast Error by Hour Ending							
year	month	HE_1_4	HE_13_16	HE_17_20	HE_21_24	HE_5_8	HE_9_12
2016	1	455	14	371	163	473	142
	2	39	83	148	42	(36)	150
	3	31	288	300	89	(136)	(82)
	4	(271)	220	97	(82)	(320)	(147)
	5	(44)	460	285	117	(69)	163
	6	(488)	(261)	(356)	(518)	(348)	(451)
	7	(163)	507	735	306	(231)	240
	8	(578)	(65)	41	(258)	(741)	(717)
	9	(358)	305	319	87	(433)	(30)
	10	(312)	371	(41)	(310)	(475)	50
	11	(329)	(146)	240	(237)	(139)	(234)
	12	(41)	(61)	282	(38)	516	83
2017	1	(395)	(62)	298	(188)	224	69
	2	34	300	185	118	538	363
	3	(68)	455	456	143	241	321
	4	(41)	631	611	550	(189)	(27)
	5	(741)	835	505	(140)	(836)	84
	6	(394)	634	637	30	(435)	179
	7	(36)	(59)	438	193	73	(32)
	8	-	-	-	-	-	-
	9	-	-	-	-	-	-
	10	-	-	-	-	-	-
	11	-	-	-	-	-	-
	12	-	-	-	-	-	-

[Home <<](#)

[previous <<](#)

[next >>](#)

[chart](#)



Monthly Average of Wind Generation by Hour Ending							
year	month	HE_1_4	HE_13_16	HE_17_20	HE_21_24	HE_5_8	HE_9_12
2016	1	6,300	4,581	4,663	6,253	6,228	5,019
	2	7,602	5,772	5,779	7,573	7,552	6,109
	3	7,872	6,033	6,013	7,565	7,793	6,833
	4	7,356	5,020	5,488	6,921	6,559	5,437
	5	7,414	5,363	6,245	7,275	6,347	5,617
	6	5,963	3,648	4,840	5,845	4,816	3,741
	7	8,903	5,074	6,793	8,315	7,411	5,948
	8	5,644	3,670	4,814	5,613	4,238	3,529
	9	6,159	3,957	4,561	6,057	5,295	4,291
	10	8,472	4,634	5,455	8,674	7,449	5,548
	11	7,043	4,855	5,049	6,718	6,517	5,225
	12	7,653	5,588	5,849	7,549	7,270	6,395
2017	1	8,014	6,700	6,599	8,265	7,550	6,562
	2	9,009	6,729	7,434	9,274	8,627	6,821
	3	10,332	7,161	7,971	10,439	9,360	8,027
	4	10,299	7,917	8,602	9,566	9,141	8,602
	5	9,211	6,841	7,592	8,633	8,222	6,984
	6	8,043	4,563	6,393	8,327	6,543	5,205
	7	6,890	3,976	5,906	7,002	5,387	4,007
	8	-	-	-	-	-	-
	9	-	-	-	-	-	-
	10	-	-	-	-	-	-
	11	-	-	-	-	-	-
	12	-	-	-	-	-	-

[Home <<](#)

[previous <<](#)

[next >>](#)

[chart](#)

RT Congestion Constraint Rankings - Top 10 Constraints by Binding Frequency and Top 10 Constraints by Total Congestion Rent																
category	year	item	rankvar	rank	JAN	FEB	MAR	APR	MAY	JUN	JUL	AUG	SEP	OCT	NOV	DEC
FREQ_EXIST	2017	SNG-ZEN (SNG-ZEN)	13,482	1	679	2,173	3,235	2,335	2,807	1,473	780	-	-	-	-	-
FREQ_EXIST	2017	HLD_FMR1 (HLD-HLD)	11,016	2	-	-	2,143	4,143	3,413	1,317	-	-	-	-	-	-
FREQ_EXIST	2017	PIGTAP_SOLST11_1 (SOLSTICE-PIGTAP)	9,464	3	-	176	1,127	2,048	2,960	1,360	1,793	-	-	-	-	-
FREQ_EXIST	2017	Panhandle GTC (PNHNDL)	8,633	4	344	826	1,553	2,223	1,393	1,704	590	-	-	-	-	-
FREQ_EXIST	2017	JK_TOKSW_1 (TOKSW-JK_CK)	5,691	5	85	3	29	136	1,055	2,958	1,425	-	-	-	-	-
FREQ_EXIST	2017	591_A (LKPNT-CRLNW)	3,648	6	462	1,403	922	519	222	120	-	-	-	-	-	-
FREQ_EXIST	2017	GIBCRK-SNG (GIBCRK-SNG)	3,405	7	375	-	308	2,419	303	-	-	-	-	-	-	-
FREQ_EXIST	2017	HAMILT_MAVR11_1 (HAMILTON-MAVERICK)	3,363	8	47	99	621	1,516	236	822	22	-	-	-	-	-
FREQ_EXIST	2017	6270_C (WGROB-BLMND)	2,843	9	-	-	12	296	1,033	699	803	-	-	-	-	-
FREQ_EXIST	2017	RINCON_WHITE_2_1 (WHITE_PT-RINCON)	2,749	10	-	-	1,747	1,002	-	-	-	-	-	-	-	-
TOP10_RENT	2017	SNG-ZEN (SNG-ZEN)	\$ 99.25	1	\$ 1.68	\$ 8.98	\$ 11.62	\$ 13.11	\$ 40.63	\$ 18.53	\$ 4.69	\$ -	\$ -	\$ -	\$ -	\$ -
TOP10_RENT	2017	Panhandle GTC (PNHNDL)	\$ 62.24	2	\$ 1.17	\$ 3.92	\$ 9.44	\$ 15.86	\$ 9.98	\$ 16.13	\$ 5.74	\$ -	\$ -	\$ -	\$ -	\$ -
TOP10_RENT	2017	6270_C (WGROB-BLMND)	\$ 52.26	3	\$ -	\$ -	\$ 0.09	\$ 6.52	\$ 21.76	\$ 17.26	\$ 6.62	\$ -	\$ -	\$ -	\$ -	\$ -
TOP10_RENT	2017	RINCON_WHITE_2_1 (WHITE_PT-RINCON)	\$ 48.63	4	\$ -	\$ -	\$ 33.80	\$ 14.82	\$ -	\$ -	\$ -	\$ -	\$ -	\$ -	\$ -	\$ -
TOP10_RENT	2017	GCB_100_1 (N_MCALLN-W_MCALLN)	\$ 39.06	5	\$ -	\$ -	\$ -	\$ 7.27	\$ 9.05	\$ 22.74	\$ -	\$ -	\$ -	\$ -	\$ -	\$ -
TOP10_RENT	2017	591_A (LKPNT-CRLNW)	\$ 23.92	6	\$ 2.86	\$ 9.12	\$ 7.14	\$ 3.06	\$ 1.20	\$ 0.54	\$ -	\$ -	\$ -	\$ -	\$ -	\$ -
TOP10_RENT	2017	6271_C (WGROB-SUMRFELD)	\$ 20.83	7	\$ 20.83	\$ -	\$ -	\$ -	\$ -	\$ -	\$ -	\$ -	\$ -	\$ -	\$ -	\$ -
TOP10_RENT	2017	FORMOS_LOLITA1_1 (LOLITA-FORMOSA)	\$ 18.11	8	\$ 6.11	\$ -	\$ 6.83	\$ -	\$ 2.04	\$ 3.12	\$ -	\$ -	\$ -	\$ -	\$ -	\$ -
TOP10_RENT	2017	GIBCRK-SNG (GIBCRK-SNG)	\$ 14.51	9	\$ 1.25	\$ -	\$ 0.42	\$ 11.85	\$ 0.99	\$ -	\$ -	\$ -	\$ -	\$ -	\$ -	\$ -
TOP10_RENT	2017	JK_TOKSW_1 (TOKSW-JK_CK)	\$ 14.07	10	\$ 0.08	\$ 0.00	\$ 0.03	\$ 0.11	\$ 5.38	\$ 5.94	\$ 2.53	\$ -	\$ -	\$ -	\$ -	\$ -

[Home <<](#)

[previous <<](#)

[next >>](#)

[chart 1](#)

[chart 2](#)

DA Congestion Constraint Rankings - Top 10 Constraints by Binding Frequency and Top 10 Constraints by Total Congestion Rent																	
category	year	item	rankvar	rank	JAN	FEB	MAR	APR	MAY	JUN	JUL	AUG	SEP	OCT	NOV	DEC	
FREQ_EXIST	2017	SNG-ZEN (SNG-ZEN)	2,570	1	179	475	504	285	453	363	311	-	-	-	-	-	
FREQ_EXIST	2017	FORMOS LOLITA1 -1 (LOLITA-FORMOSA)	2,265	2	196	-	117	174	465	690	623	-	-	-	-	-	
FREQ_EXIST	2017	HLD_FMR1 (HLD-HLD)	2,145	3	12	21	376	665	638	412	21	-	-	-	-	-	
FREQ_EXIST	2017	BRUNI 69 1 (BRUNI-BRUNI)	1,784	4	268	140	302	268	346	139	321	-	-	-	-	-	
FREQ_EXIST	2017	EAGLEP_ESCOND1 1 (ESCONDID-EAGLE_PS)	1,683	5	167	115	384	214	264	348	191	-	-	-	-	-	
FREQ_EXIST	2017	Panhandle GTC (PNHNDL)	1,649	6	51	165	315	321	307	266	224	-	-	-	-	-	
FREQ_EXIST	2017	HAMILT_MAVERI1 1 (HAMILTON-MAVERICK)	1,585	7	125	81	124	429	331	300	195	-	-	-	-	-	
FREQ_EXIST	2017	GCB_100_1 (N_MCALLN-W_MCALLN)	1,521	8	-	5	21	242	448	489	316	-	-	-	-	-	
FREQ_EXIST	2017	GREENL_WEAVER1 1 (WEAVERRD-GREENLK)	1,400	9	243	272	124	264	382	96	19	-	-	-	-	-	
FREQ_EXIST	2017	RINCON_WHITE_2 1 (WHITE_PT-RINCON)	1,387	10	-	1	620	369	235	138	24	-	-	-	-	-	
TOP10_RENT	2017	SNG-ZEN (SNG-ZEN)	\$ 85.78	1	\$ 3.00	\$ 9.25	\$ 12.28	\$ 10.37	\$ 18.90	\$ 20.34	\$ 11.65	\$ -	\$ -	\$ -	\$ -	\$ -	
TOP10_RENT	2017	6270_C (WGROB-BLMND)	\$ 45.47	2	\$ 1.03	\$ -	\$ 4.96	\$ 6.97	\$ 16.41	\$ 10.07	\$ 6.04	\$ -	\$ -	\$ -	\$ -	\$ -	
TOP10_RENT	2017	Panhandle GTC (PNHNDL)	\$ 45.33	3	\$ 0.61	\$ 1.89	\$ 6.71	\$ 10.27	\$ 8.19	\$ 11.11	\$ 6.54	\$ -	\$ -	\$ -	\$ -	\$ -	
TOP10_RENT	2017	GCB_100_1 (N_MCALLN-W_MCALLN)	\$ 45.26	4	\$ -	\$ 0.00	\$ 0.30	\$ 3.91	\$ 13.07	\$ 23.41	\$ 4.56	\$ -	\$ -	\$ -	\$ -	\$ -	
TOP10_RENT	2017	GIBCRK-SNG (GIBCRK-SNG)	\$ 16.92	5	\$ 1.68	\$ 0.01	\$ 1.60	\$ 12.45	\$ 0.74	\$ 0.36	\$ 0.08	\$ -	\$ -	\$ -	\$ -	\$ -	
TOP10_RENT	2017	RINCON_WHITE_2 1 (WHITE_PT-RINCON)	\$ 14.37	6	\$ -	\$ 0.00	\$ 9.22	\$ 4.57	\$ 0.43	\$ 0.13	\$ 0.01	\$ -	\$ -	\$ -	\$ -	\$ -	
TOP10_RENT	2017	KEPLER_KOCH_U1 1 (KOCH_UP-KEPLER)	\$ 14.12	7	\$ 4.82	\$ 0.32	\$ 0.39	\$ -	\$ -	\$ 8.51	\$ 0.08	\$ -	\$ -	\$ -	\$ -	\$ -	
TOP10_RENT	2017	591_A (LKPNT-CRLNW)	\$ 14.03	8	\$ 0.49	\$ 5.71	\$ 3.64	\$ 2.88	\$ 1.28	\$ 0.02	\$ -	\$ -	\$ -	\$ -	\$ -	\$ -	
TOP10_RENT	2017	590_A (LWSSW-LWVJS)	\$ 8.95	9	\$ 1.18	\$ 3.24	\$ 1.02	\$ 2.14	\$ 0.87	\$ 0.49	\$ -	\$ -	\$ -	\$ -	\$ -	\$ -	
TOP10_RENT	2017	6271_C (WGROB-SUMRFELD)	\$ 8.27	10	\$ 8.27	\$ -	\$ -	\$ -	\$ -	\$ -	\$ -	\$ -	\$ -	\$ -	\$ -	\$ -	

[Home <<](#)

[previous <<](#)

[next >>](#)

[chart 1](#)

[chart 2](#)

Top 10 CRR Pairs Ranked by Monthly Auction Values - Top 10 PTP Obligations by Total Transaction Values and Top 10 PTP Options by Total Transaction Values																	
fr_option	year	pair	total_value	rank	JAN	FEB	MAR	APR	MAY	JUN	JUL	AUG	SEP	OCT	NOV	DEC	
N	2017	HB NORTH-HB HOUSTON	\$ 24.61	1	\$ 0.92	\$ 1.46	\$ 1.98	\$ 2.92	\$ 4.46	\$ 3.42	\$ 4.12	\$ 5.33	\$ -	\$ -	\$ -	\$ -	
N	2017	HB SOUTH-LZ SOUTH	\$ 12.39	2	\$ 0.18	\$ 0.41	\$ 0.85	\$ 0.94	\$ 1.54	\$ 1.39	\$ 3.56	\$ 3.53	\$ -	\$ -	\$ -	\$ -	
N	2017	HB NORTH-LZ NORTH	\$ 11.40	3	\$ 0.68	\$ 0.70	\$ 0.53	\$ 0.75	\$ 1.21	\$ 2.00	\$ 2.94	\$ 2.59	\$ -	\$ -	\$ -	\$ -	
N	2017	HB HOUSTON-LZ HOUSTON	\$ 7.10	4	\$ 0.17	\$ 0.19	\$ 0.33	\$ 0.61	\$ 1.59	\$ 1.21	\$ 1.67	\$ 1.34	\$ -	\$ -	\$ -	\$ -	
N	2017	HB NORTH-HB SOUTH	\$ 6.38	5	\$ 0.18	\$ 0.34	\$ 0.92	\$ 0.55	\$ 0.81	\$ 1.39	\$ 1.45	\$ 0.74	\$ -	\$ -	\$ -	\$ -	
N	2017	HB WEST-HB NORTH	\$ 4.65	6	\$ 0.05	\$ 0.82	\$ 1.22	\$ 0.81	\$ 0.73	\$ 0.12	\$ 0.84	\$ 0.07	\$ -	\$ -	\$ -	\$ -	
N	2017	HB WEST-LZ WEST	\$ 3.72	7	\$ 0.20	\$ 0.20	\$ 0.30	\$ 0.46	\$ 0.56	\$ 0.55	\$ 0.94	\$ 0.50	\$ -	\$ -	\$ -	\$ -	
N	2017	CPSES_UNIT2-HB NORTH	\$ 2.02	8	\$ 0.13	\$ 0.13	\$ 0.44	\$ 0.46	\$ 0.28	\$ 0.31	\$ 0.27	\$ -	\$ -	\$ -	\$ -	\$ -	
N	2017	CPSES_UNIT1-HB NORTH	\$ 1.99	9	\$ 0.14	\$ 0.02	\$ 0.44	\$ 0.50	\$ 0.34	\$ 0.28	\$ 0.27	\$ 0.00	\$ -	\$ -	\$ -	\$ -	
N	2017	JCKCNTY2_ST2-LZ NORTH	\$ 1.27	10	\$ -	\$ -	\$ -	\$ -	\$ 0.15	\$ -	\$ 0.45	\$ 0.66	\$ -	\$ -	\$ -	\$ -	
Y	2017	HB NORTH-LZ NORTH	\$ 5.07	1	\$ 0.21	\$ 0.43	\$ 0.31	\$ 0.32	\$ 0.55	\$ 0.71	\$ 1.28	\$ 1.26	\$ -	\$ -	\$ -	\$ -	
Y	2017	HB HOUSTON-LZ HOUSTON	\$ 3.37	2	\$ 0.08	\$ 0.07	\$ 0.09	\$ 0.29	\$ 0.74	\$ 0.50	\$ 1.09	\$ 0.50	\$ -	\$ -	\$ -	\$ -	
Y	2017	HB SOUTH-LZ SOUTH	\$ 2.67	3	\$ 0.10	\$ 0.12	\$ 0.17	\$ 0.17	\$ 0.23	\$ 0.02	\$ 0.90	\$ 0.96	\$ -	\$ -	\$ -	\$ -	
Y	2017	HB NORTH-HB HOUSTON	\$ 1.74	4	\$ 0.46	\$ 0.43	\$ 0.23	\$ 0.14	\$ 0.24	\$ 0.01	\$ 0.12	\$ 0.12	\$ -	\$ -	\$ -	\$ -	
Y	2017	SSPURT_WIND1-HB WEST	\$ 1.27	5	\$ 0.10	\$ 0.09	\$ 0.15	\$ 0.34	\$ 0.21	\$ 0.31	\$ 0.04	\$ 0.02	\$ -	\$ -	\$ -	\$ -	
Y	2017	HB WEST-HB NORTH	\$ 0.98	6	\$ 0.04	\$ 0.07	\$ 0.55	\$ 0.08	\$ 0.03	\$ 0.02	\$ 0.18	\$ 0.01	\$ -	\$ -	\$ -	\$ -	
Y	2017	HB WEST-LZ WEST	\$ 0.79	7	\$ 0.05	\$ 0.05	\$ 0.11	\$ 0.04	\$ 0.10	\$ 0.06	\$ 0.14	\$ 0.24	\$ -	\$ -	\$ -	\$ -	
Y	2017	SLTFRK_UN1_2-LZ NORTH	\$ 0.58	8	\$ 0.02	\$ 0.01	\$ 0.02	\$ 0.09	\$ 0.14	\$ 0.09	\$ 0.09	\$ 0.10	\$ -	\$ -	\$ -	\$ -	
Y	2017	SPNC_SPNCE_4-LHSES_UNIT1	\$ 0.51	9	\$ 0.00	\$ 0.00	\$ 0.12	\$ 0.19	\$ 0.10	\$ 0.01	\$ 0.08	\$ 0.00	\$ -	\$ -	\$ -	\$ -	
Y	2017	FTR_FTR_G1_4-THW_THWGT5X	\$ 0.49	10	\$ 0.10	\$ 0.25	\$ -	\$ 0.03	\$ 0.12	\$ -	\$ 0.00	\$ -	\$ -	\$ -	\$ -	\$ -	

[Home <<](#)

[previous <<](#)

[chart 1](#)

[chart 2](#)