

To the Public Utility Commission of Texas

ERCOT Wholesale Electricity Market Monthly Report

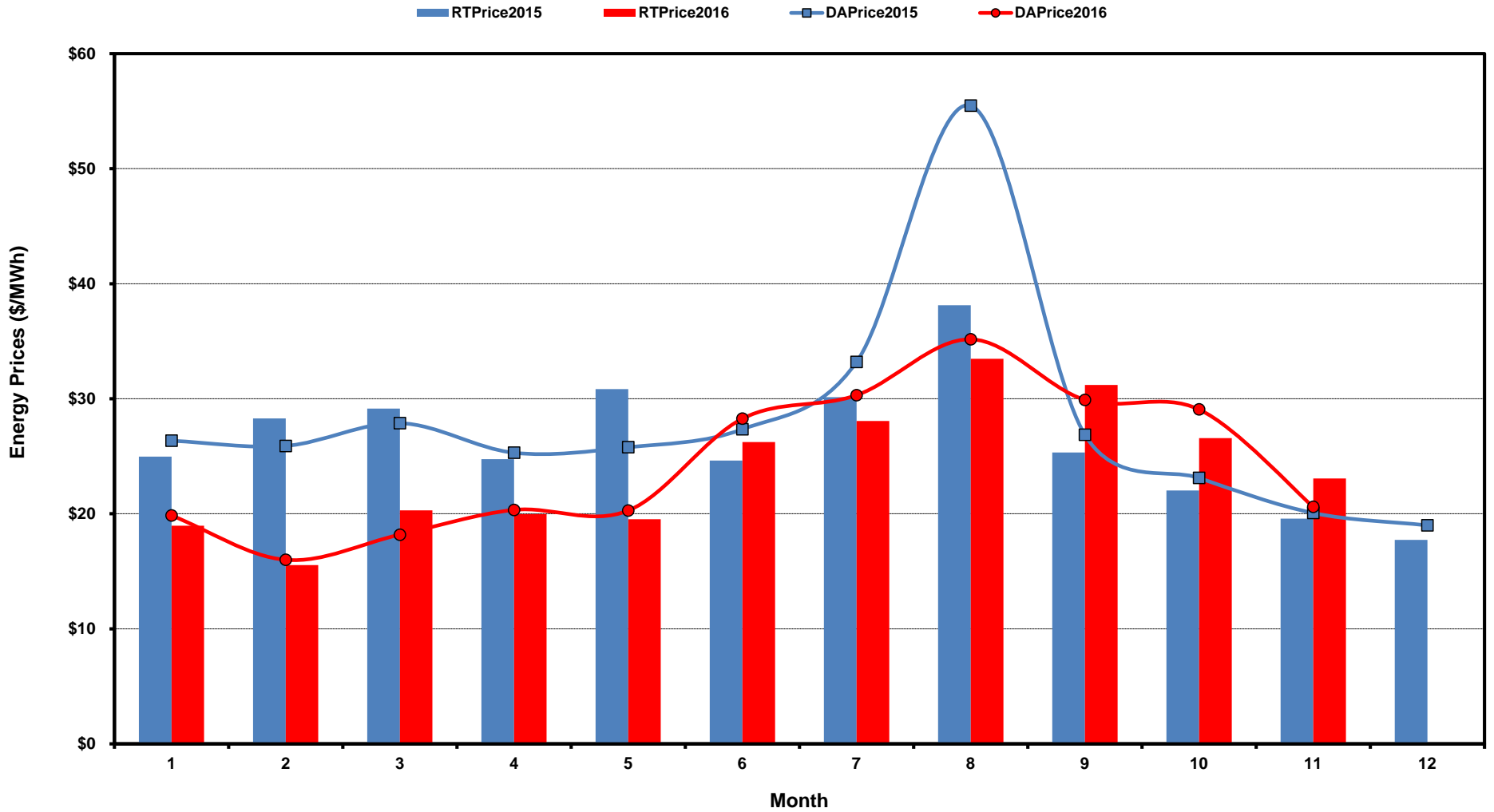
Monday, December 12, 2016

Potomac Economics, Ltd.
Independent Market Monitor

1	ERCOT-wide Average Energy Prices DA vs. RT	chart	table
2	Load Zone Load Statistics	chart	table
3	Load Zone Monthly Average Energy Prices DA vs RT	chart	table
4	ERCOT-wide Monthly Implied Heat Rates DA vs RT	chart	table
5	Load Zone Monthly Implied Heat Rates DA vs RT	chart	table
6	Daily ORDC Reserve Adder Avg. Value and Duration	chart	table
7	Monthly Ancillary Services Required MW	chart	table
8	Hourly Average of Ancillary Services Required MW	chart	table
9	Monthly Average Ancillary Services Price	chart	table
10	Monthly Average A/S Cost per MWh Load	chart	table
11	Ercot-wide Cumulative Peaker Net Margin	chart	table
12	DA vs. RT Load Forecast Error by Hour Ending	chart	table
13	Monthly Average of Wind Generation by Hour Ending	chart	table
14	RT Constraint Rankings		table
	- Top 10 Constraints by Total Congestion Rent	chart	
	- Top 10 Constraints by Binding Frequency	chart	
15	DA Constraint Rankings		table
	- Top 10 Constraints by Total Congestion Rent	chart	
	- Top 10 Constraints by Binding Frequency	chart	
16	CRR Pairs by Monthly Auction Value Rankings		table
	- Top 10 PTP Obligations by Total Transaction Value	chart	
	- Top 10 PTP Options by Total Transaction Value	chart	

ERCOT-wide Average Energy Prices DA vs RT

(avg. DA & RT SPPs weighted by Real Time Settlement Loads)



[Home <<](#)

[previous <<](#)

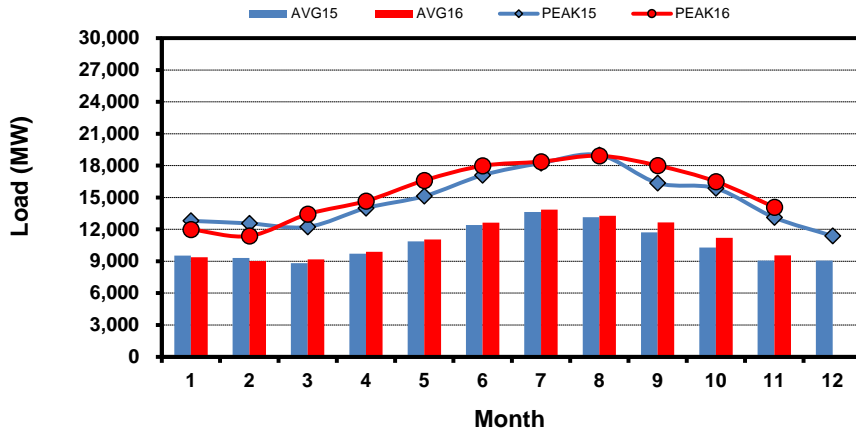
[next >>](#)

[data](#)

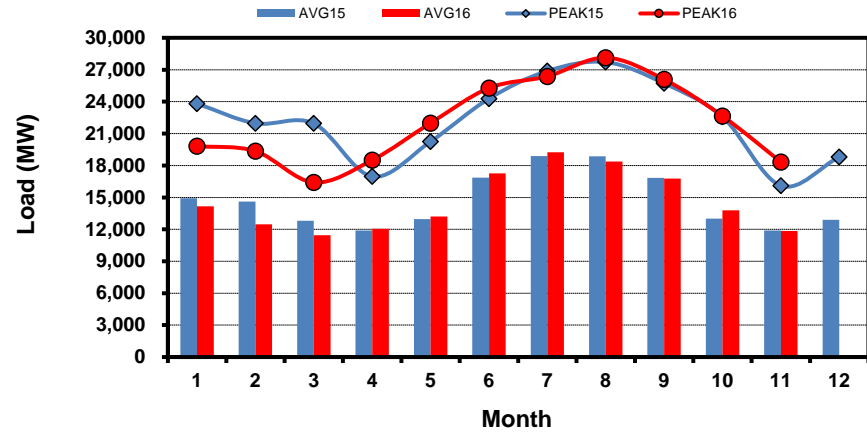
Load Zone Load Statistics

(Nodal load zone made comparable to zonal system Load Zone definitions*)

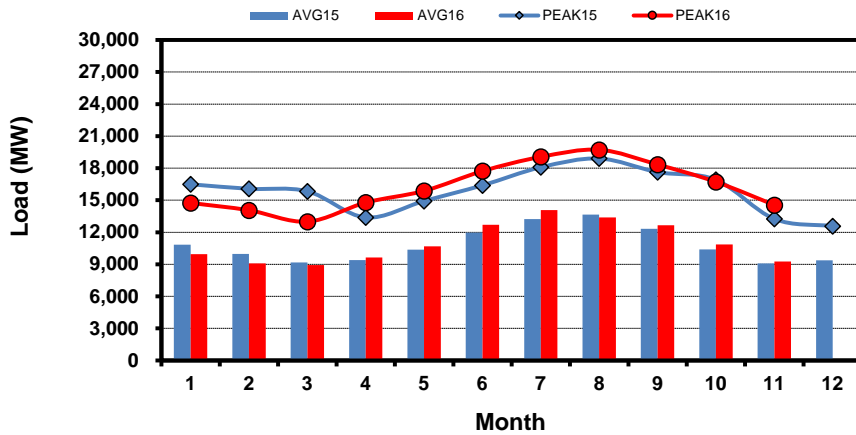
Houston Zone



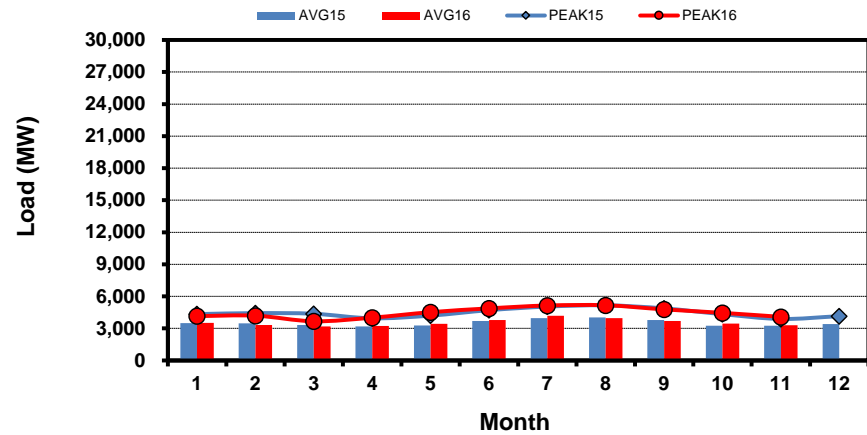
North Zone



South Zone



West Zone



[Home <<](#)

[previous <<](#)

[next >>](#)

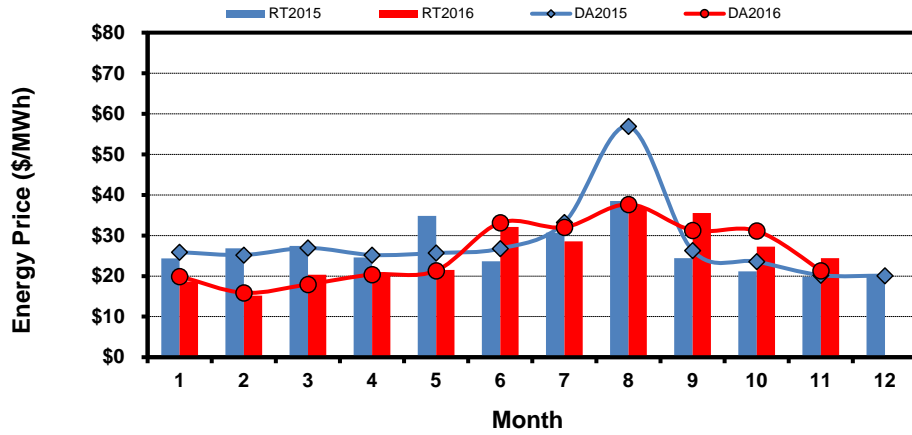
[data](#)

Note: * Zonal load zone definition vs. Nodal comparable load zone definition: LZ_Houston=LZ_Houston; LZ_West=LZ_West; LZ_North=(LZ_North,LZ_RAYBN); LZ_South=(LZ_South,LZ_CPS,LZ_AEN,LZ_LCRA)

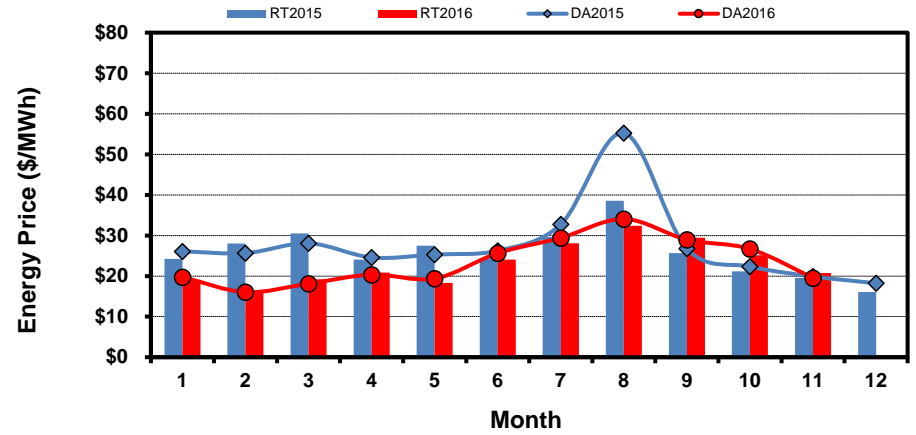
Load Zone Monthly Average Energy Price DA vs RT

(avg. DA & RT SPPs weighted by Real Time Settlement Loads)
 (Nodal load zone made comparable to zonal system Load Zone definitions*)

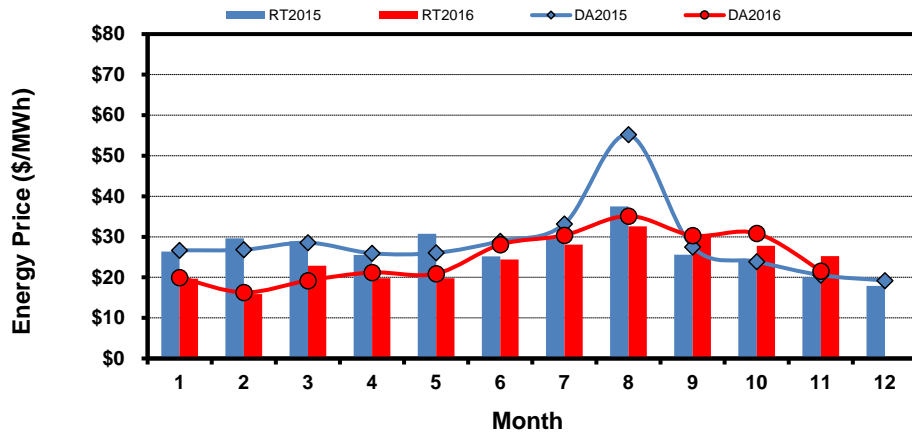
Houston Zone



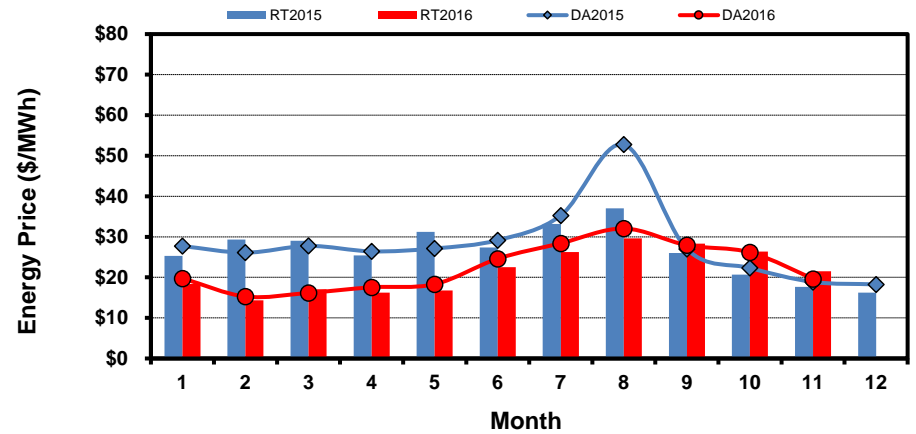
North Zone



South Zone



West Zone



[Home <<](#)

[previous <<](#)

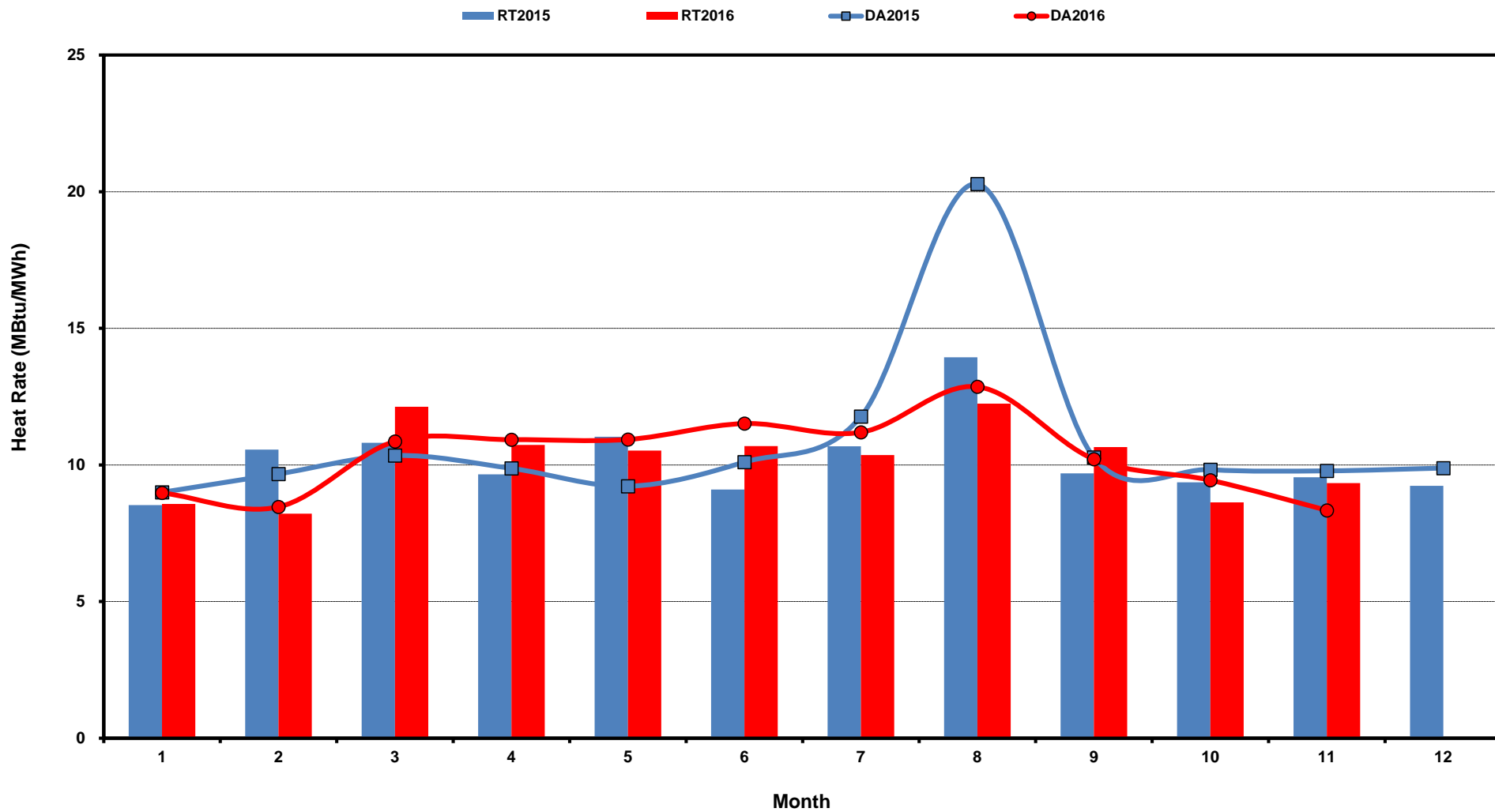
[next >>](#)

[data](#)

Note: * Zonal load zone definition vs. Nodal comparable load zone definition: LZ_Houston=LZ_Houston; LZ_West=LZ_West; LZ_North=(LZ_North,LZ_RAYBN); LZ_South=(LZ_South,LZ_CPS,LZ_AEN,LZ_LCRA)

ERCOT-wide Monthly Implied Heat Rate DA vs RT

(avg. heat rates weighted by Real Time Settlement Loads)



[Home <<](#)

[previous <<](#)

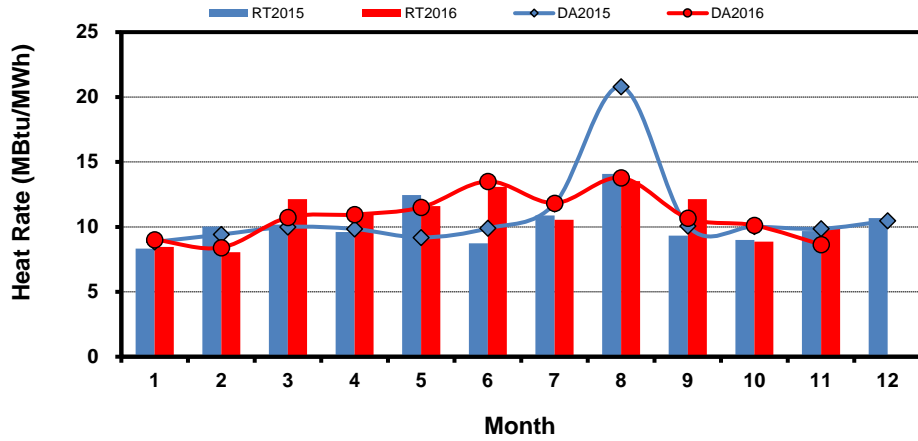
[next >>](#)

[data](#)

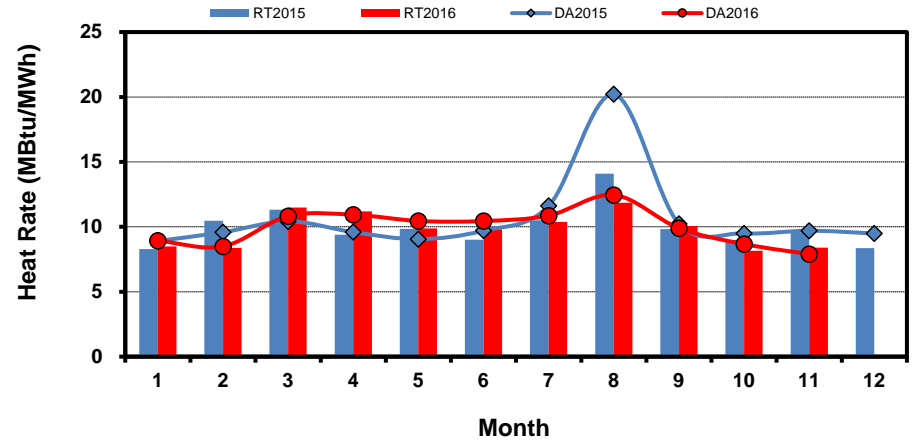
Load Zone Monthly Implied Heat Rate DA vs RT

(avg. heat rates weighted by Real Time Settlement Loads)
 (Nodal load zone made comparable to zonal system Load Zone definitions*)

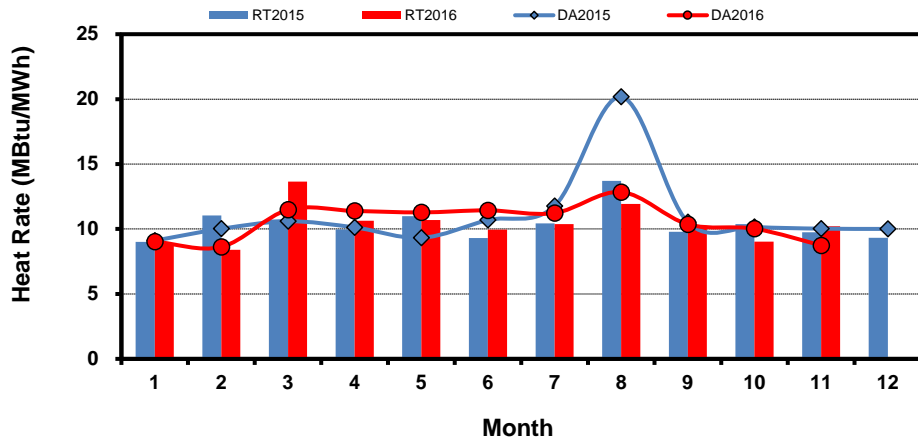
Houston Zone



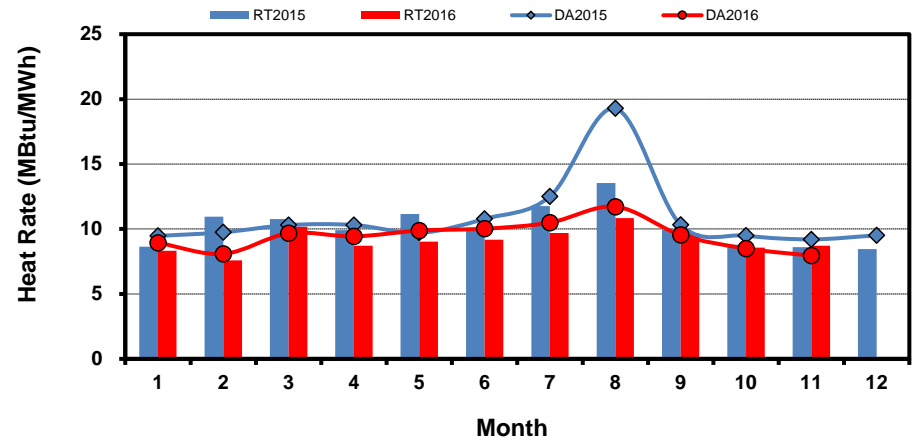
North Zone



South Zone



West Zone



[Home <<](#)

[previous <<](#)

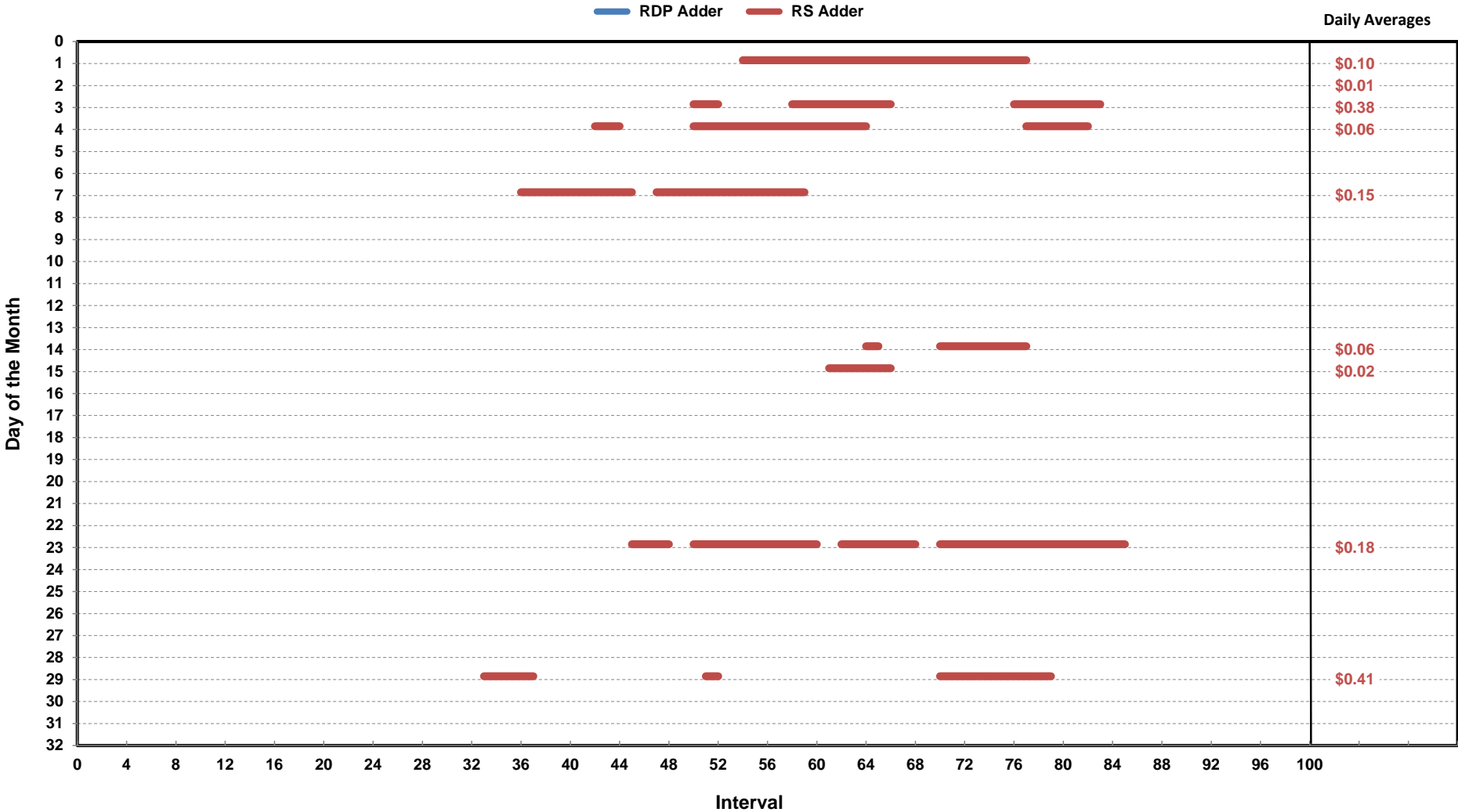
[next >>](#)

[data](#)

Note: * Zonal load zone definition vs. Nodal comparable load zone definition: LZ_Houston=LZ_Houston; LZ_West=LZ_West; LZ_North=(LZ_North,LZ_RAYBN); LZ_South=(LZ_South,LZ_CPS,LZ_AEN,LZ_LCRA)

Daily ORDC Adders Average Values and Interval Duration

Nov-2016



[Home <<](#)

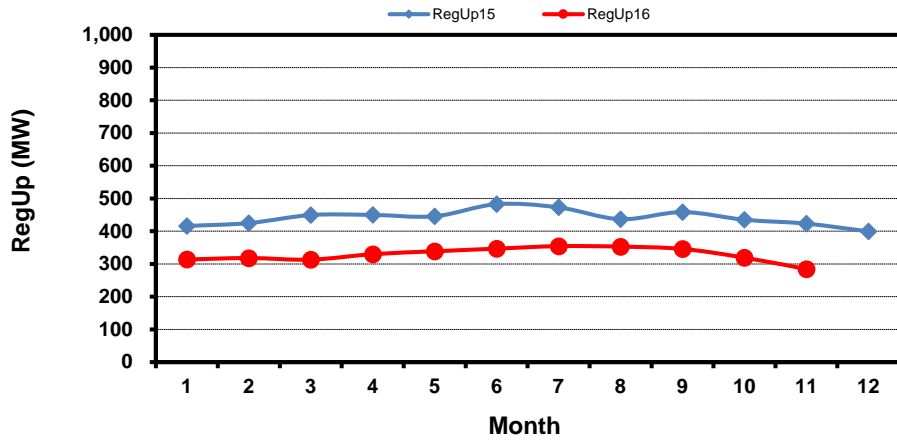
[previous <<](#)

[next >>](#)

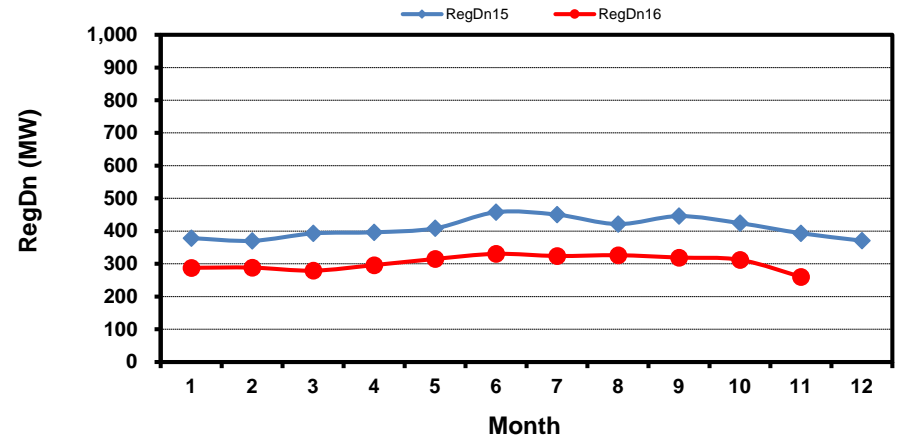
[data](#)

Monthly Average of Ancillary Services Required MW

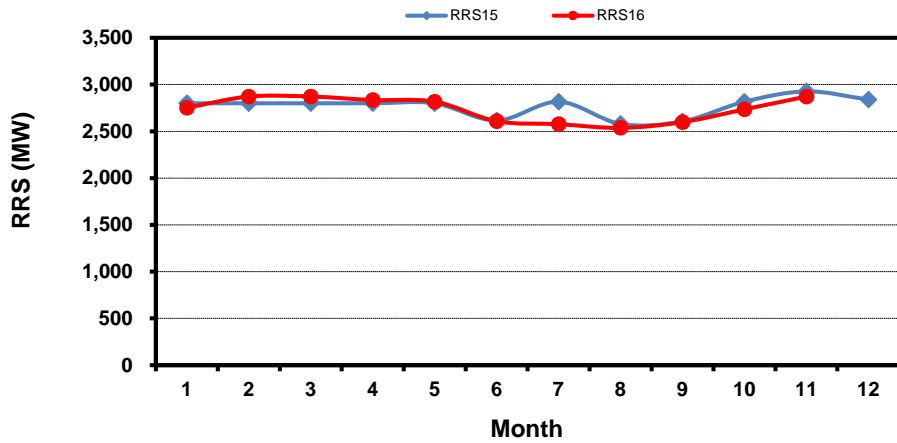
Regulation Up



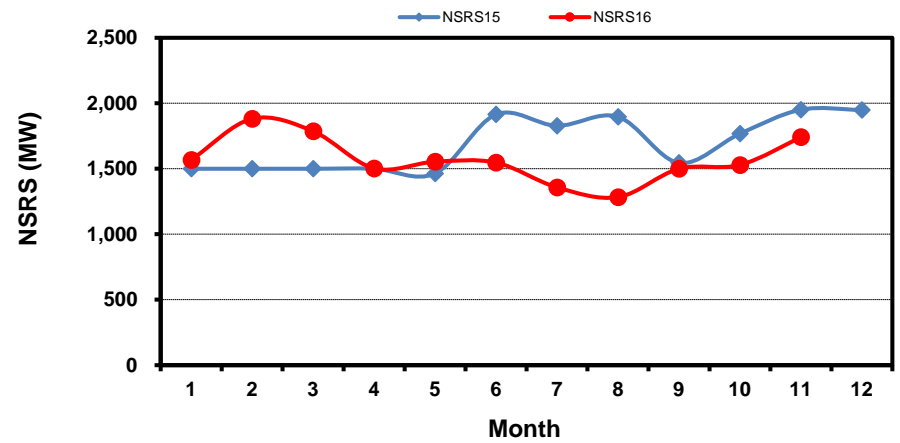
Regulation Down



Responsive Reserve



Non-Spin Reserve



[Home <<](#)

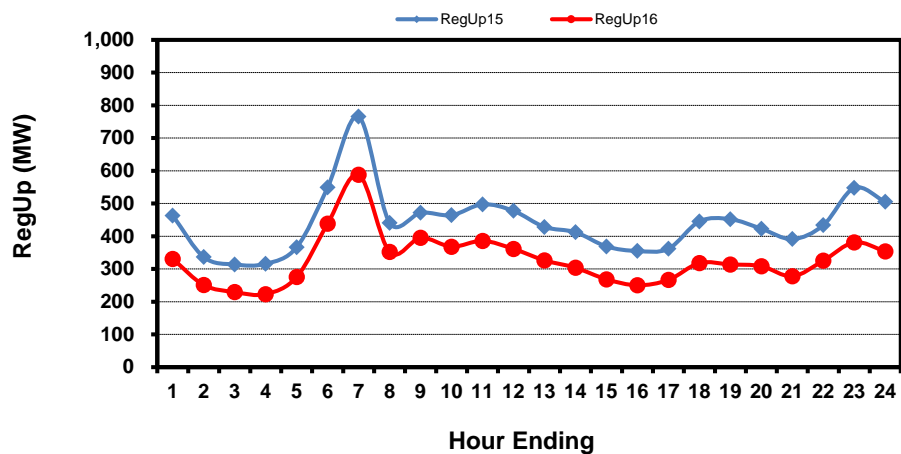
[previous <<](#)

[next >>](#)

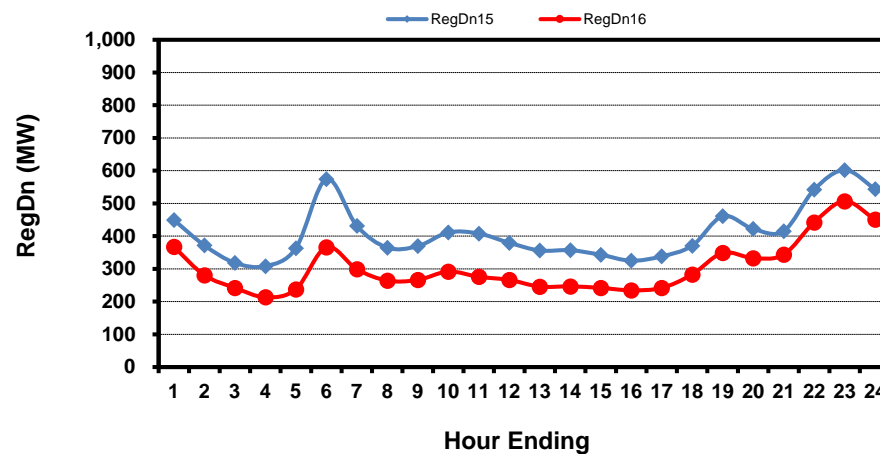
[data](#)

Hourly Average of Ancillary Services Required MW

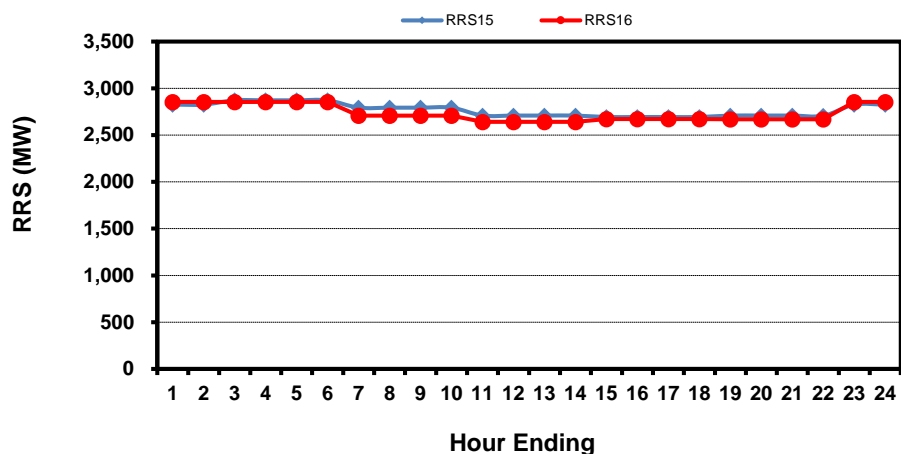
Regulation Up



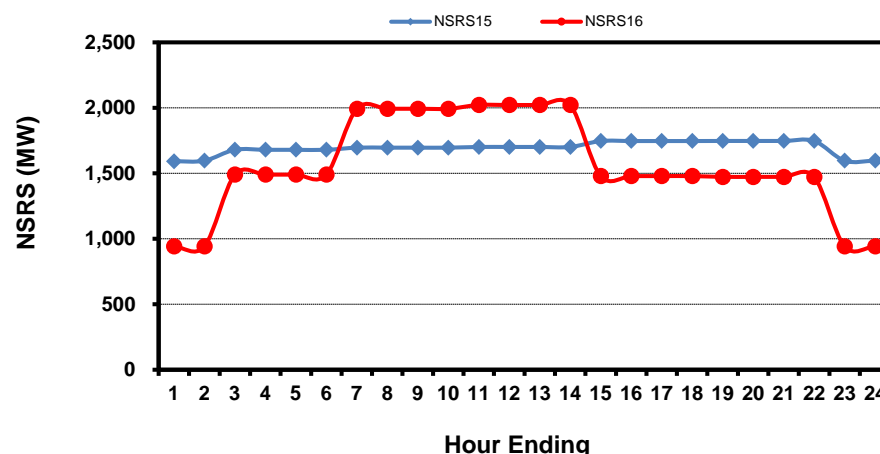
Regulation Down



Responsive Reserve



Non-Spin Reserve



[Home <<](#)

[previous <<](#)

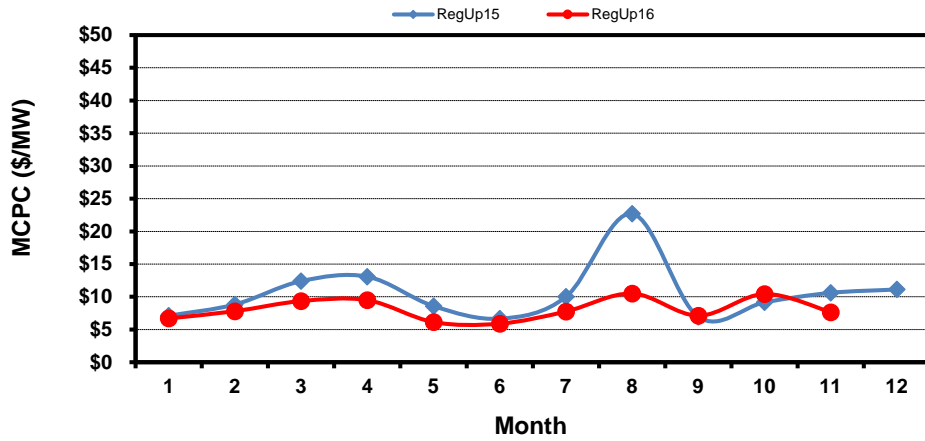
[next >>](#)

[data](#)

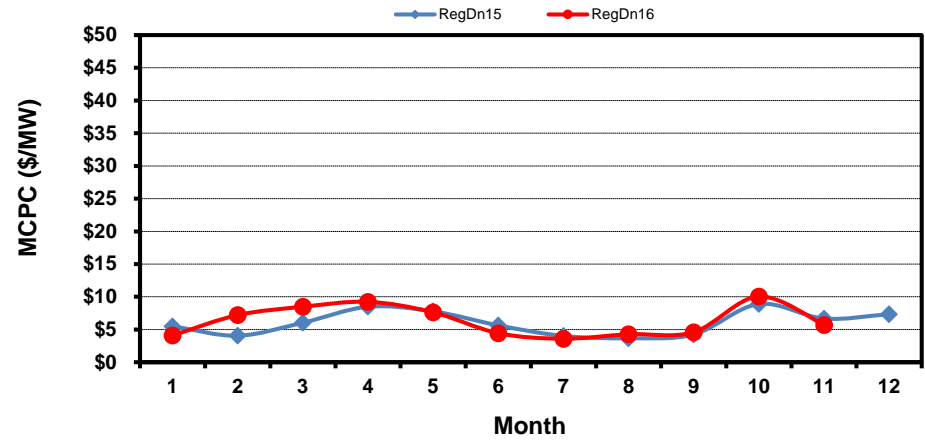
Monthly Average Ancillary Services Price

(weighted by A/S Quantities Required)

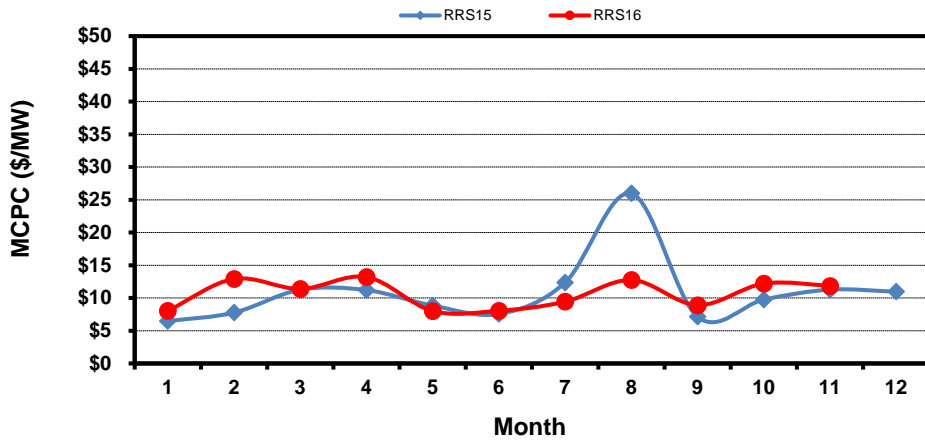
Regulation Up



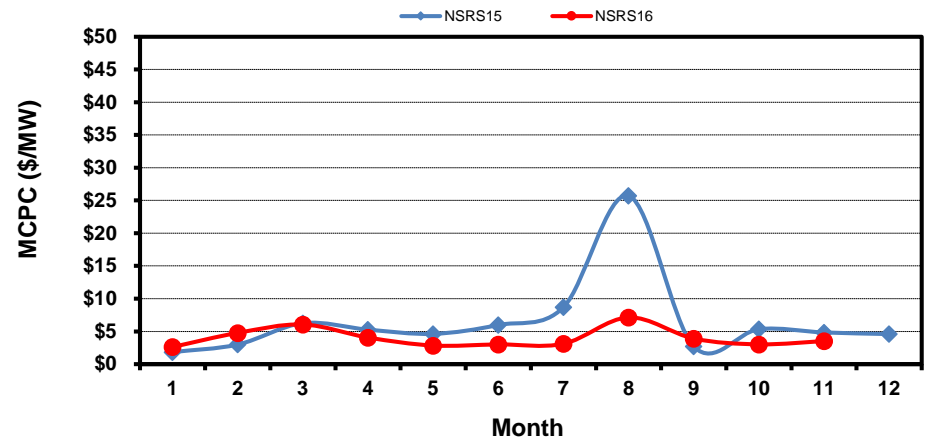
Regulation Down



Responsive Reserve



Non-Spin Reserve



[Home <<](#)

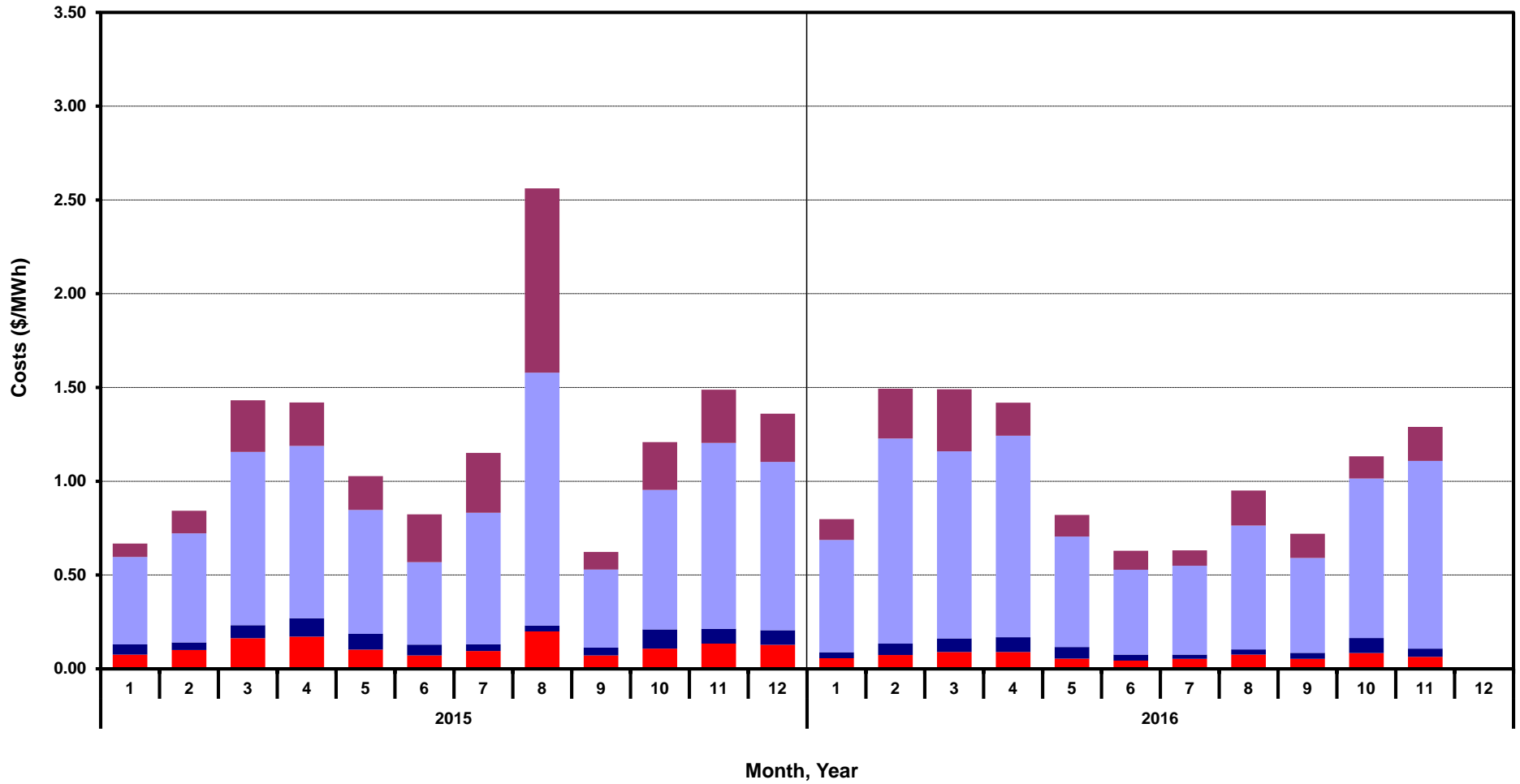
[previous <<](#)

[next >>](#)

[data](#)

Monthly Average A/S Cost per MWh Load

RegUp RegDn RRS NonSpin



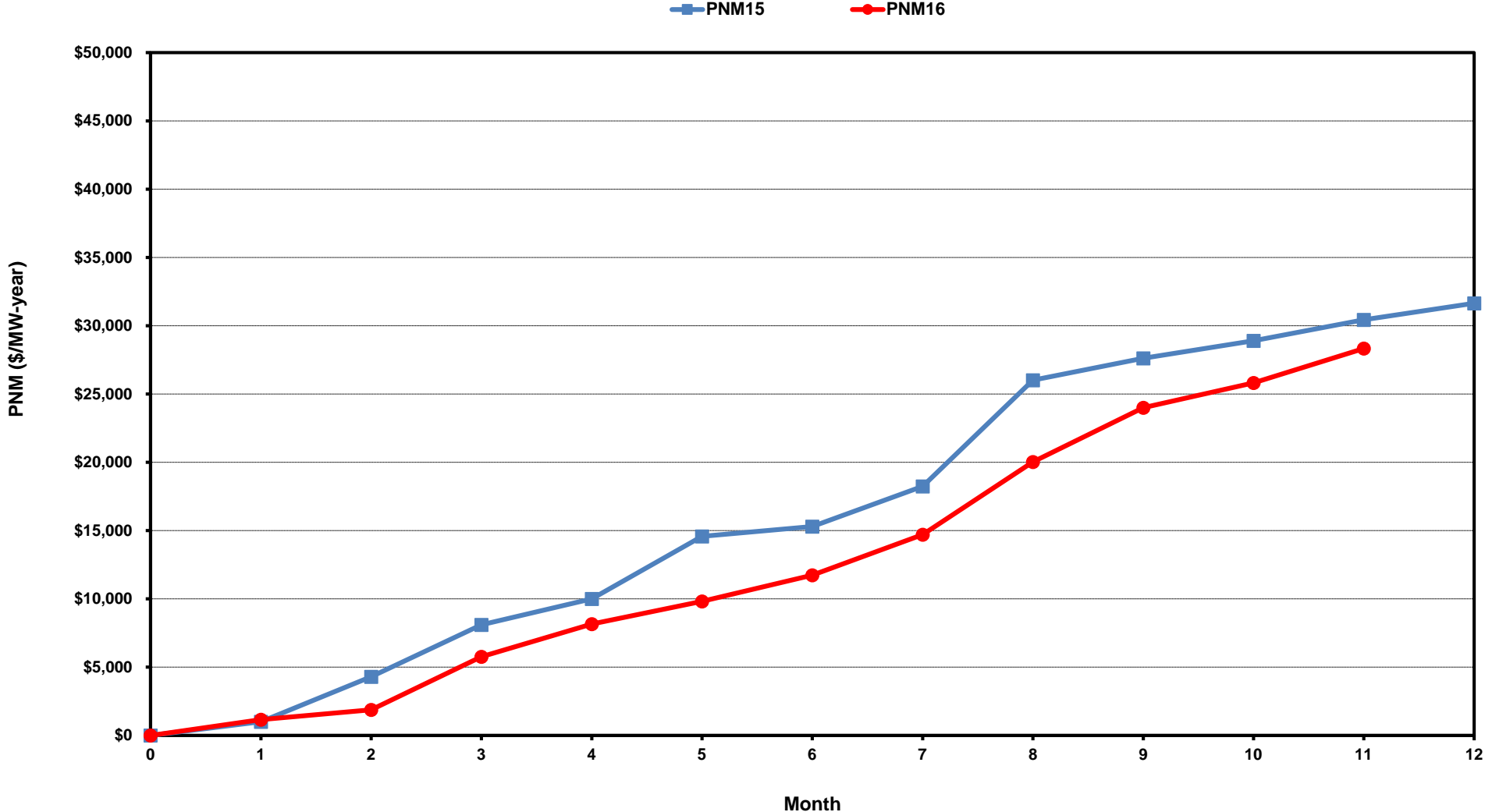
[Home <<](#)

[previous <<](#)

[next >>](#)

[data](#)

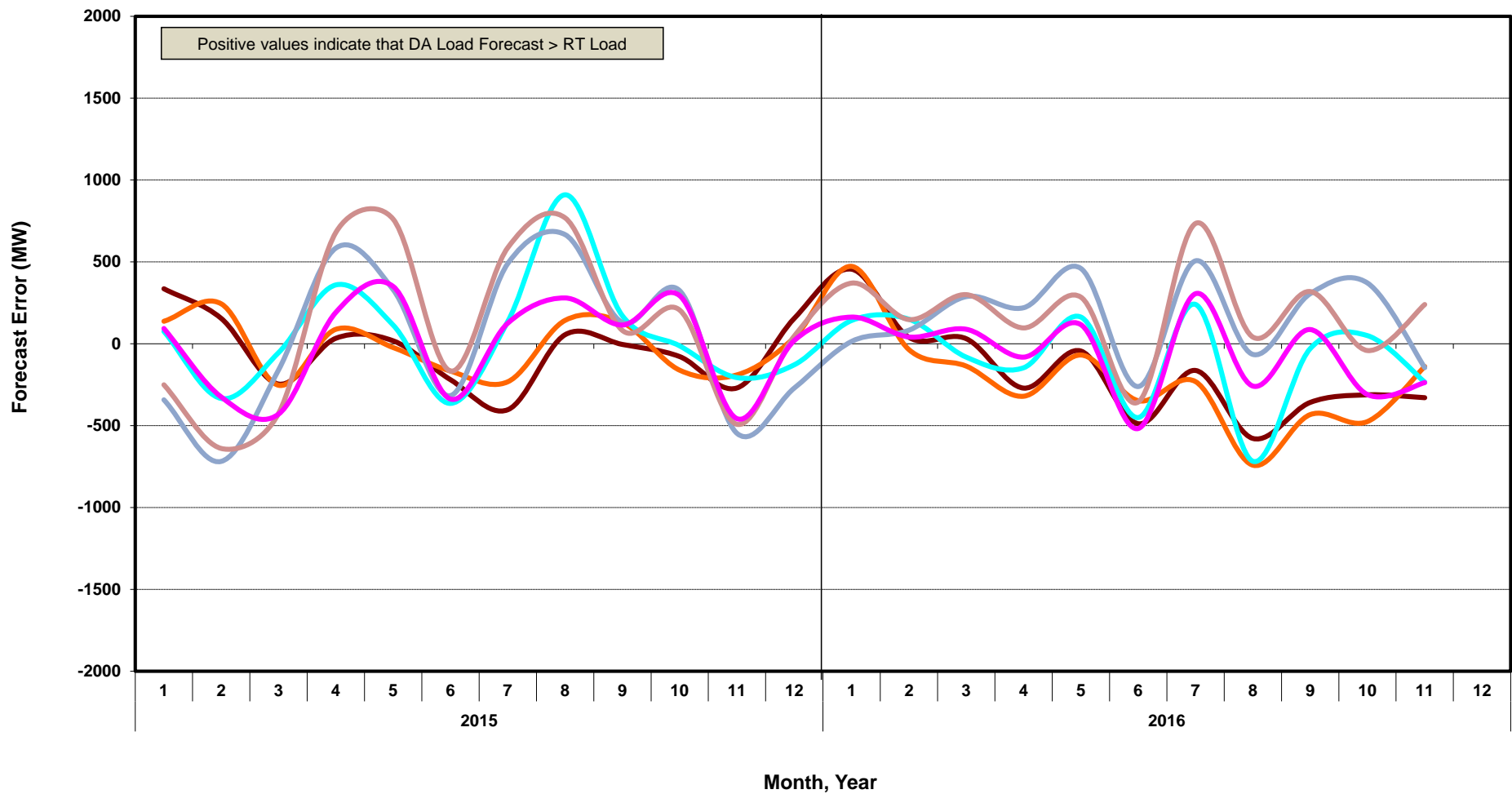
ERCOT-wide Cumulative Peaker Net Margin



[Home <<](#) [previous <<](#) [next >>](#)
[data](#)

DA vs. RT Load Forecast Error by Hour Ending

HE_1_4 HE_5_8 HE_9_12 HE_13_16 HE_17_20 HE_21_24



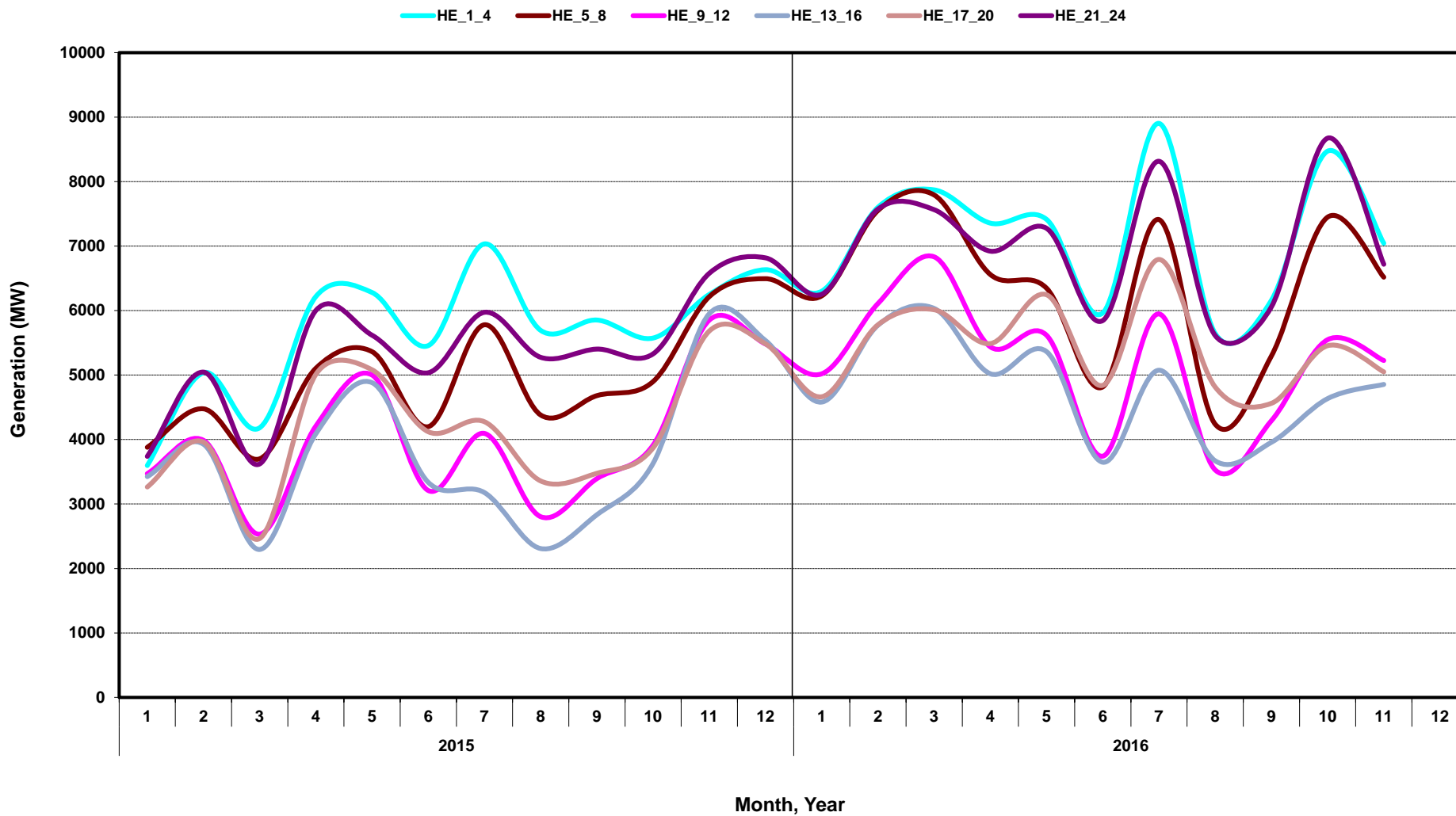
[Home <<](#)

[previous <<](#)

[next >>](#)

[data](#)

Monthly Average of Wind Generation by Hour Ending



[Home <<](#)

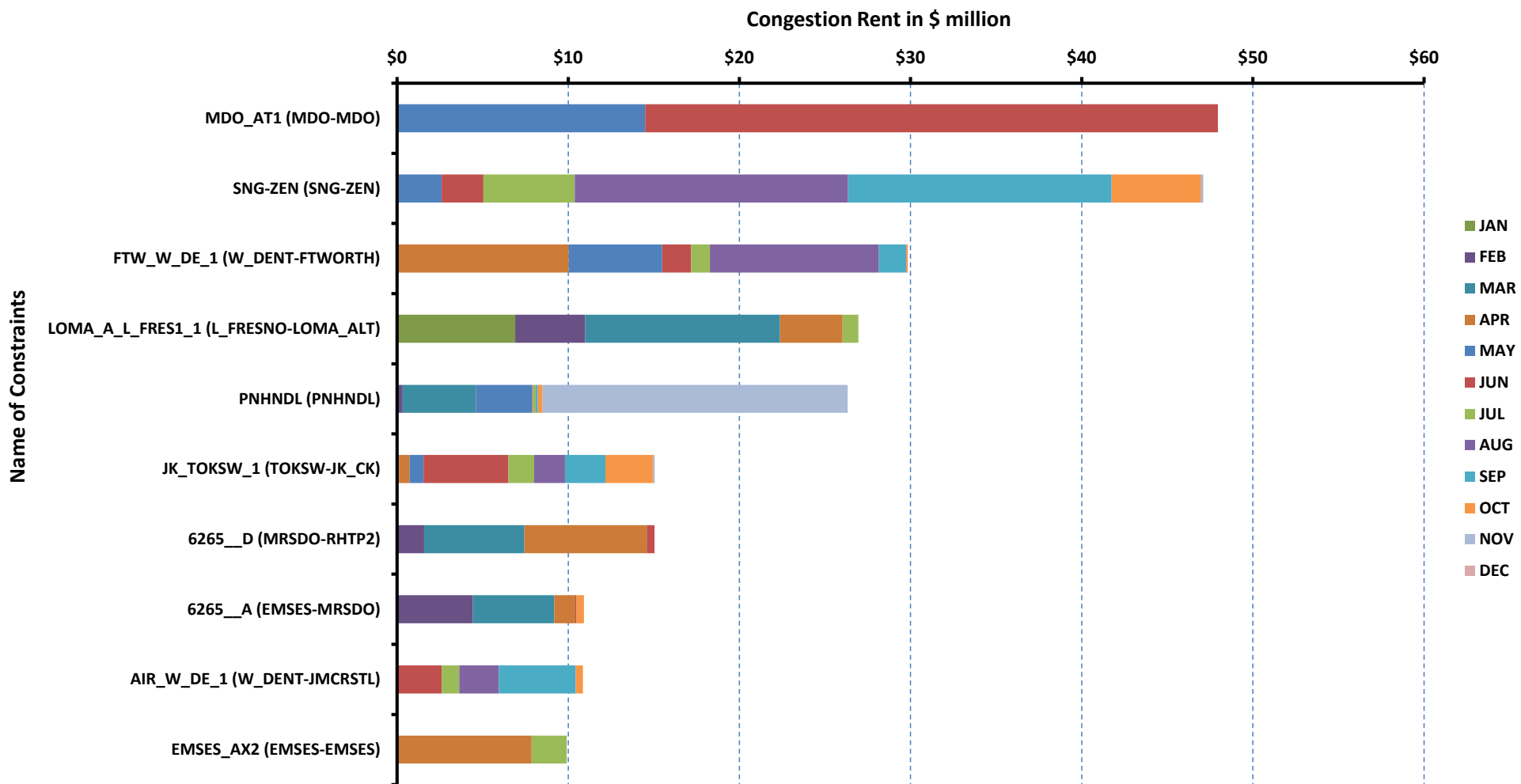
[previous <<](#)

[next >>](#)

[data](#)

RT Congestion Constraint Rankings - 1

Top 10 Constraints by Total Congestion Rent



[Home <<](#)

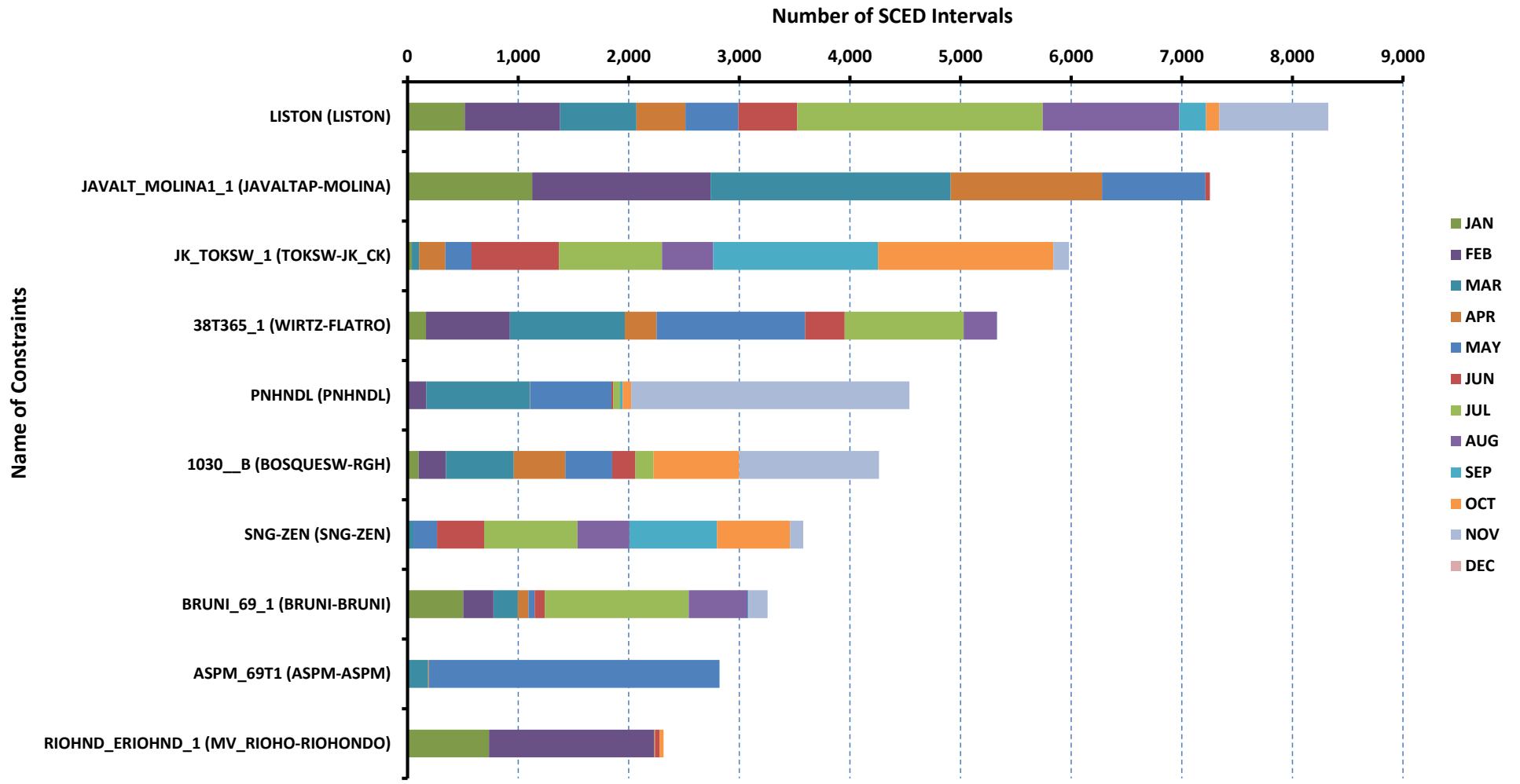
[previous <<](#)

[next >>](#)

[data](#)

RT Congestion Constraint Rankings - 2

Top 10 Constraints by Binding Frequency



[Home <<](#)

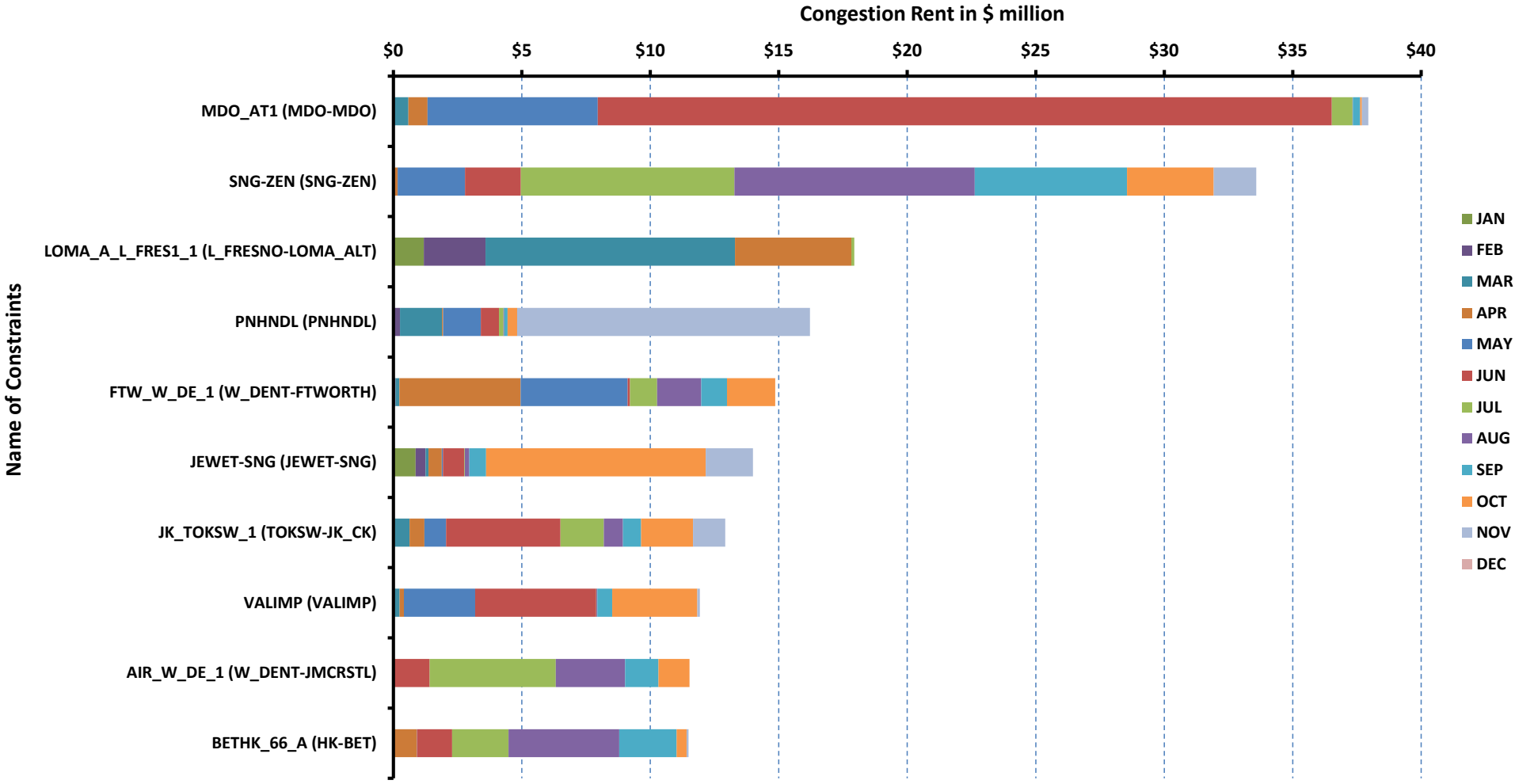
[previous <<](#)

[next >>](#)

[data](#)

DA Congestion Constraint Rankings - 1

Top 10 Constraints by Total Congestion Rent

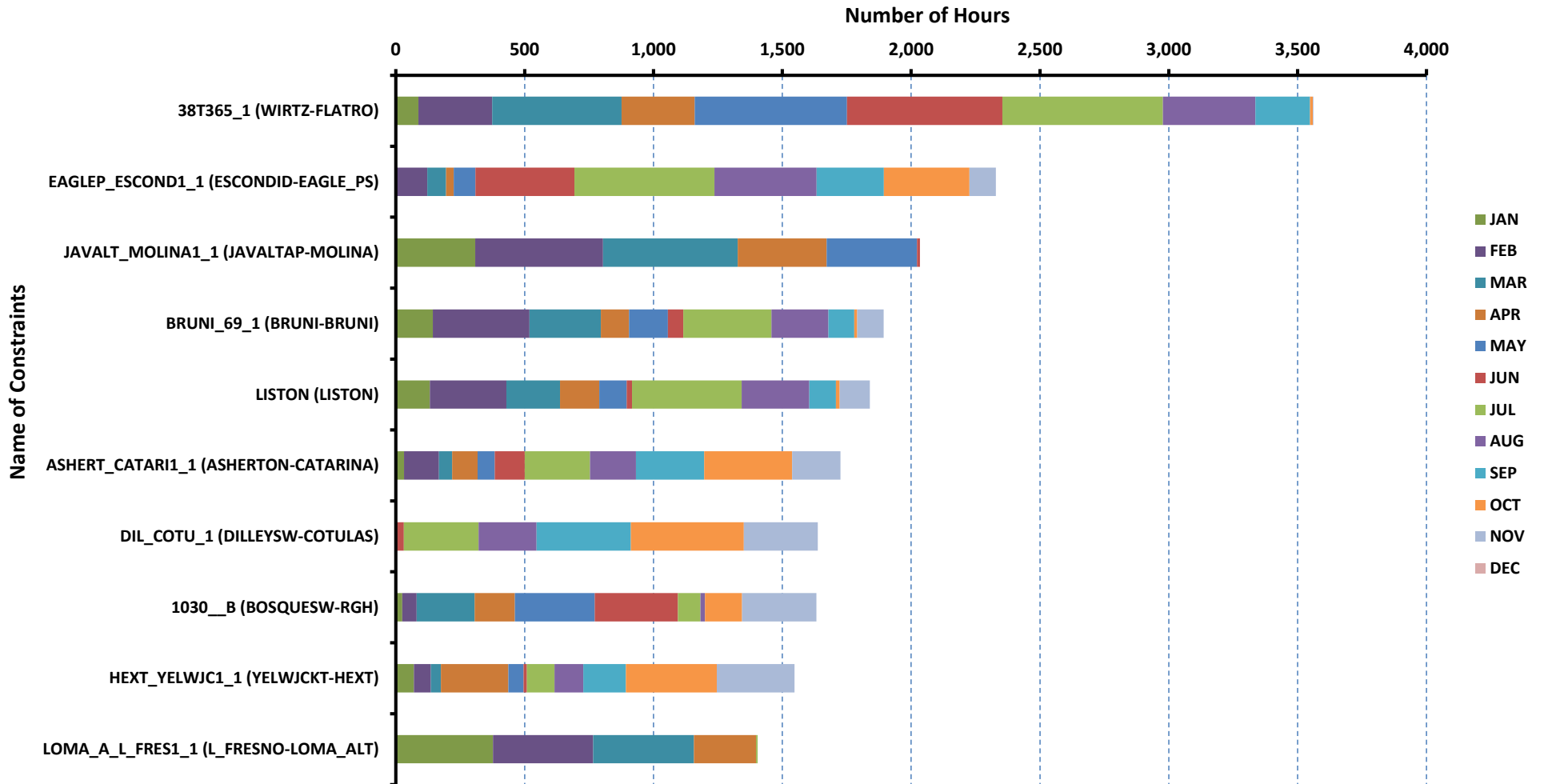


[Home <<](#)
[previous <<](#)
[next >>](#)

[data](#)

DA Congestion Constraint Rankings - 2

Top 10 Constraints by Binding Frequency



[Home <<](#)

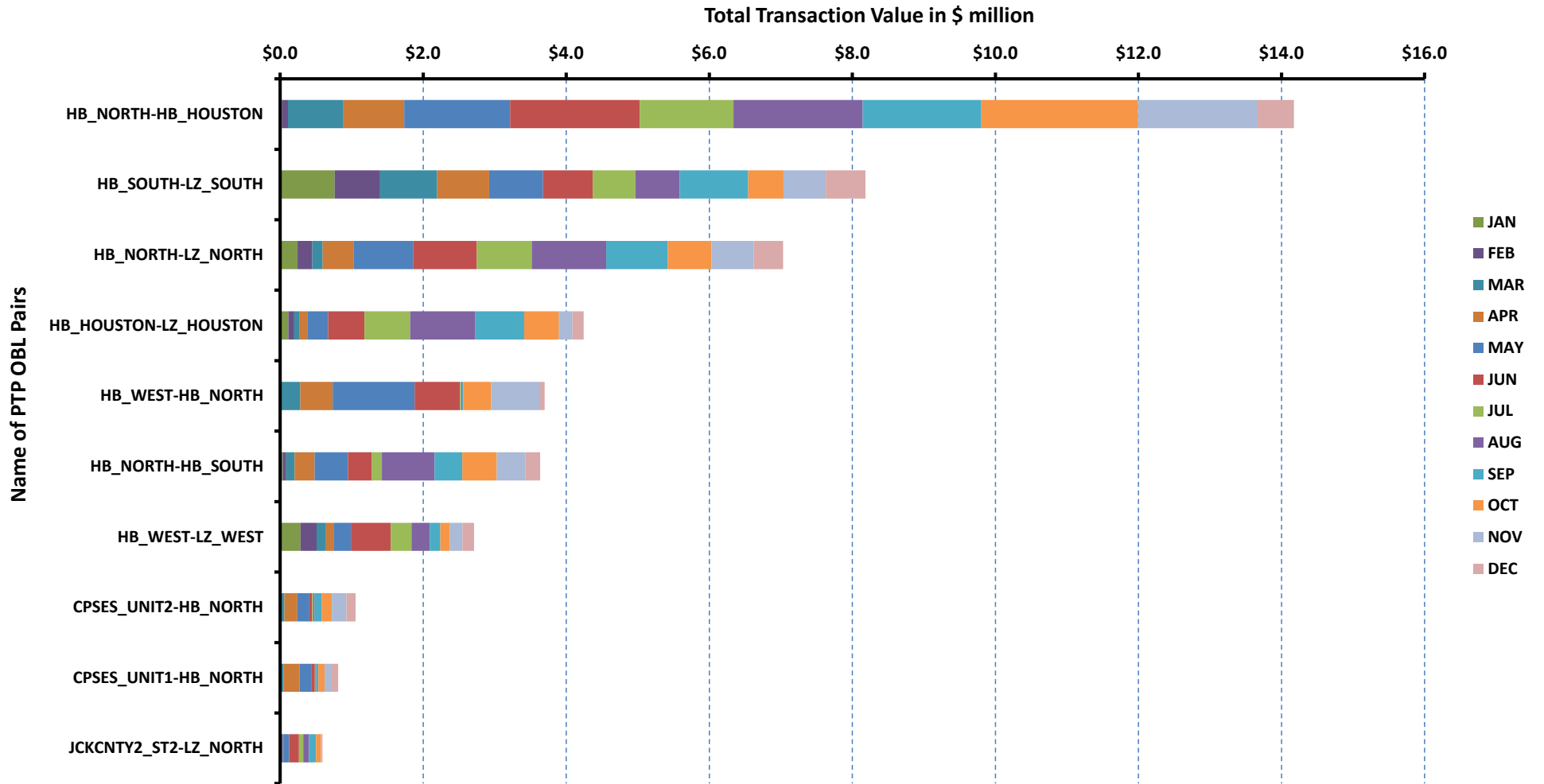
[previous <<](#)

[next >>](#)

[data](#)

Top 10 CRR Pairs Ranked by Monthly Auction Values - 1

Top 10 PTP Obligations by Total Transaction Value



[Home <<](#)

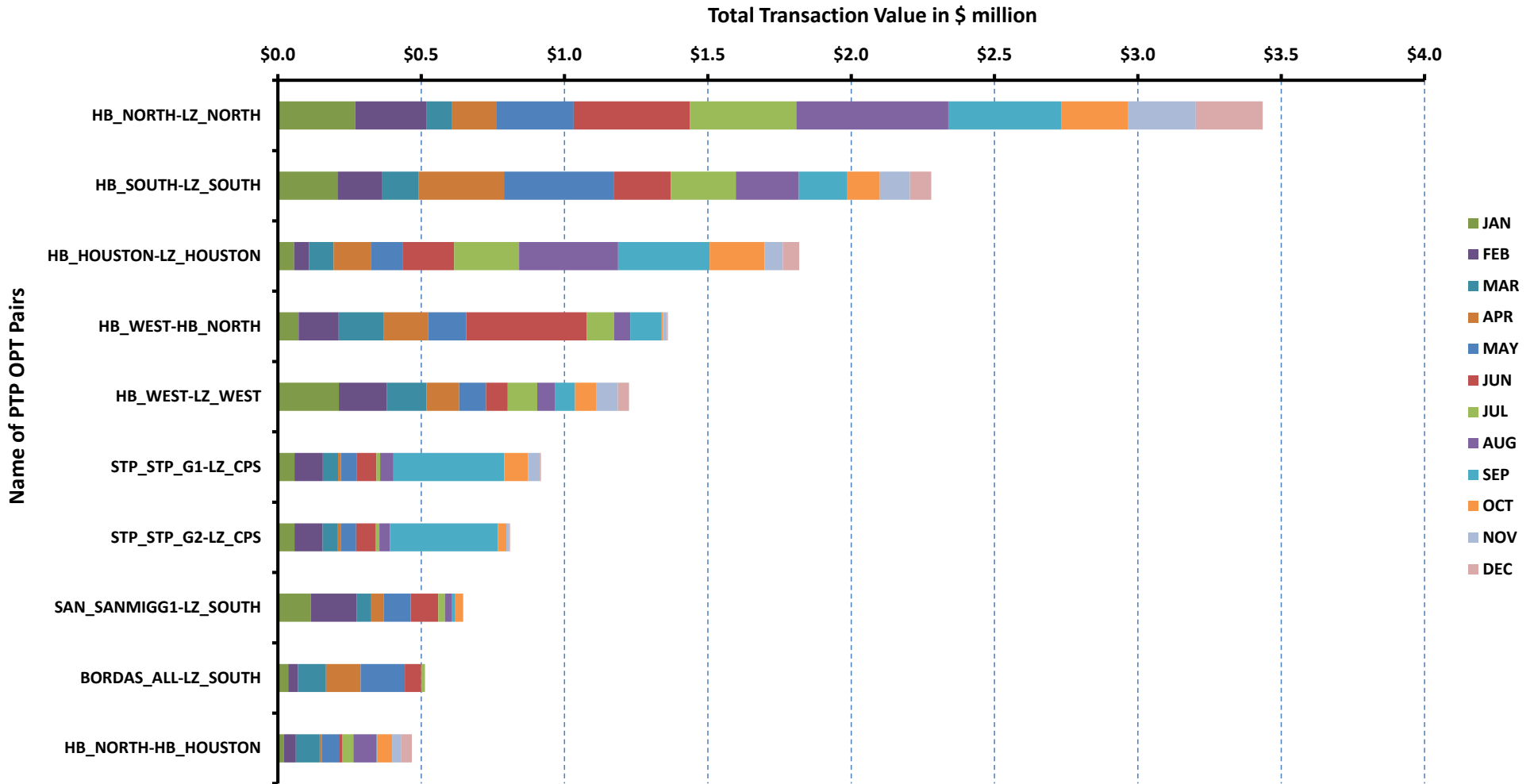
[previous <<](#)

[next >>](#)

[data](#)

Top 10 CRR Pairs Ranked by Monthly Auction Values - 2

Top 10 PTP Options by Total Transaction Value



[Home <<](#)

[previous <<](#)

[next >>](#)

[data](#)

ERCOT-wide Avg. Energy Price - DA vs. RT			
year	month	dam_spp	rtm_spp
2015	1	\$ 26.35	\$ 24.97
	2	\$ 25.90	\$ 28.28
	3	\$ 27.88	\$ 29.14
	4	\$ 25.30	\$ 24.74
	5	\$ 25.78	\$ 30.84
	6	\$ 27.35	\$ 24.63
	7	\$ 33.20	\$ 30.14
	8	\$ 55.48	\$ 38.12
	9	\$ 26.87	\$ 25.33
	10	\$ 23.11	\$ 22.02
	11	\$ 20.07	\$ 19.58
	12	\$ 18.99	\$ 17.74
2016	1	\$ 19.85	\$ 18.96
	2	\$ 16.00	\$ 15.54
	3	\$ 18.18	\$ 20.30
	4	\$ 20.34	\$ 19.98
	5	\$ 20.28	\$ 19.52
	6	\$ 28.27	\$ 26.23
	7	\$ 30.31	\$ 28.06
	8	\$ 35.17	\$ 33.47
	9	\$ 29.90	\$ 31.20
	10	\$ 29.07	\$ 26.58
	11	\$ 20.60	\$ 23.06
	12	\$ -	\$ -

[Home <<](#)

[previous <<](#)

[next >>](#)

[chart](#)

Load Zone Load Statistics										
year	month	loadPEAK_Houston	loadPEAK_North	loadPEAK_South	loadPEAK_West	loadAVG_Houston	loadAVG_North	loadAVG_South	loadAVG_West	
2015	1	12,803	23,814	16,491	4,339	9,538	14,918	10,830	3,496	
	2	12,561	21,965	16,070	4,433	9,308	14,612	9,980	3,477	
	3	12,235	21,950	15,837	4,372	8,827	12,810	9,182	3,318	
	4	14,001	16,971	13,386	3,944	9,708	11,901	9,397	3,177	
	5	15,128	20,253	14,926	4,199	10,879	12,956	10,381	3,265	
	6	17,100	24,285	16,392	4,708	12,402	16,870	11,974	3,702	
	7	18,236	26,878	18,084	5,043	13,643	18,882	13,232	3,958	
	8	18,994	27,717	18,902	5,164	13,139	18,853	13,665	4,029	
	9	16,361	25,718	17,631	4,876	11,726	16,837	12,322	3,782	
	10	15,857	22,580	16,908	4,335	10,302	13,015	10,387	3,250	
	11	13,116	16,108	13,252	3,884	9,076	11,891	9,089	3,255	
	12	11,380	18,800	12,571	4,146	9,059	12,889	9,377	3,412	
2016	1	11,996	19,817	14,745	4,154	9,367	14,160	9,958	3,525	
	2	11,378	19,345	14,062	4,194	9,027	12,473	9,085	3,318	
	3	13,434	16,410	12,996	3,667	9,184	11,447	8,934	3,177	
	4	14,666	18,506	14,780	4,007	9,890	12,058	9,634	3,239	
	5	16,608	21,991	15,871	4,520	11,044	13,212	10,679	3,423	
	6	17,981	25,277	17,724	4,876	12,625	17,255	12,696	3,795	
	7	18,373	26,378	19,056	5,145	13,869	19,237	14,083	4,190	
	8	18,924	28,130	19,719	5,166	13,284	18,384	13,382	3,973	
	9	18,005	26,091	18,339	4,781	12,648	16,770	12,650	3,697	
	10	16,498	22,649	16,716	4,457	11,205	13,787	10,852	3,442	
	11	14,091	18,330	14,551	4,082	9,555	11,845	9,258	3,293	
	12	-	-	-	-	-	-	-	-	-

[Home <<](#)

[previous <<](#)

[next >>](#)

[chart](#)

Load Zone Monthly Average Energy Price - DA vs. RT									
year	month	avgRTMp_Houston	avgRTMp_North	avgRTMp_South	avgRTMp_West	avgDAMp_Houston	avgDAMp_North	avgDAMp_South	avgDAMp_West
2015	1	\$ 24.37	\$ 24.24	\$ 26.39	\$ 25.32	\$ 25.89	\$ 26.09	\$ 26.67	\$ 27.72
	2	\$ 26.86	\$ 28.03	\$ 29.60	\$ 29.35	\$ 25.21	\$ 25.66	\$ 26.83	\$ 26.10
	3	\$ 27.42	\$ 30.50	\$ 28.93	\$ 29.01	\$ 26.93	\$ 28.08	\$ 28.55	\$ 27.76
	4	\$ 24.59	\$ 24.08	\$ 25.53	\$ 25.39	\$ 25.21	\$ 24.58	\$ 25.94	\$ 26.41
	5	\$ 34.82	\$ 27.49	\$ 30.72	\$ 31.20	\$ 25.68	\$ 25.30	\$ 26.05	\$ 27.14
	6	\$ 23.61	\$ 24.36	\$ 25.20	\$ 27.36	\$ 26.76	\$ 26.26	\$ 28.92	\$ 29.18
	7	\$ 30.68	\$ 29.60	\$ 29.44	\$ 33.16	\$ 33.21	\$ 32.75	\$ 33.20	\$ 35.27
	8	\$ 38.50	\$ 38.54	\$ 37.49	\$ 37.05	\$ 56.90	\$ 55.28	\$ 55.18	\$ 52.76
	9	\$ 24.39	\$ 25.66	\$ 25.57	\$ 25.98	\$ 26.30	\$ 26.75	\$ 27.52	\$ 27.00
	10	\$ 21.14	\$ 21.16	\$ 24.41	\$ 20.69	\$ 23.57	\$ 22.33	\$ 23.89	\$ 22.31
	11	\$ 19.86	\$ 19.57	\$ 20.01	\$ 17.64	\$ 20.22	\$ 19.89	\$ 20.57	\$ 18.87
	12	\$ 20.50	\$ 16.07	\$ 17.91	\$ 16.24	\$ 20.10	\$ 18.23	\$ 19.22	\$ 18.27
2016	1	\$ 18.68	\$ 18.77	\$ 19.69	\$ 18.39	\$ 19.93	\$ 19.74	\$ 19.95	\$ 19.76
	2	\$ 15.20	\$ 15.84	\$ 15.89	\$ 14.35	\$ 15.89	\$ 16.05	\$ 16.30	\$ 15.28
	3	\$ 20.31	\$ 19.22	\$ 22.84	\$ 17.04	\$ 17.95	\$ 18.12	\$ 19.22	\$ 16.18
	4	\$ 20.32	\$ 20.84	\$ 19.79	\$ 16.22	\$ 20.39	\$ 20.35	\$ 21.20	\$ 17.56
	5	\$ 21.52	\$ 18.32	\$ 19.82	\$ 16.75	\$ 21.33	\$ 19.38	\$ 20.92	\$ 18.32
	6	\$ 32.12	\$ 24.08	\$ 24.42	\$ 22.53	\$ 33.15	\$ 25.64	\$ 28.08	\$ 24.60
	7	\$ 28.55	\$ 28.07	\$ 28.10	\$ 26.26	\$ 32.03	\$ 29.41	\$ 30.40	\$ 28.41
	8	\$ 36.96	\$ 32.41	\$ 32.61	\$ 29.63	\$ 37.68	\$ 34.06	\$ 35.13	\$ 32.04
	9	\$ 35.54	\$ 29.45	\$ 30.02	\$ 28.35	\$ 31.27	\$ 28.97	\$ 30.34	\$ 27.94
	10	\$ 27.27	\$ 25.13	\$ 27.78	\$ 26.36	\$ 31.14	\$ 26.69	\$ 30.87	\$ 26.17
	11	\$ 24.38	\$ 20.75	\$ 25.22	\$ 21.50	\$ 21.33	\$ 19.51	\$ 21.58	\$ 19.64
	12	\$ -	\$ -	\$ -	\$ -	\$ -	\$ -	\$ -	\$ -

[Home <<](#)

[previous <<](#)

[next >>](#)

[chart](#)

ERCOT-wide Monthly Implied Heat Rate - DA vs. RT						
year	month	gasprice	rtn_spp	HR_rtn	dam_spp	HR_dam
2015	1	\$ 2.93	\$ 24.97	8.53	\$ 26.35	9.00
	2	\$ 2.68	\$ 28.28	10.56	\$ 25.90	9.67
	3	\$ 2.69	\$ 29.14	10.81	\$ 27.88	10.35
	4	\$ 2.56	\$ 24.74	9.66	\$ 25.30	9.87
	5	\$ 2.80	\$ 30.84	11.03	\$ 25.78	9.22
	6	\$ 2.71	\$ 24.63	9.10	\$ 27.35	10.11
	7	\$ 2.82	\$ 30.14	10.69	\$ 33.20	11.77
	8	\$ 2.74	\$ 38.12	13.94	\$ 55.48	20.28
	9	\$ 2.61	\$ 25.33	9.69	\$ 26.87	10.28
	10	\$ 2.35	\$ 22.02	9.36	\$ 23.11	9.83
	11	\$ 2.05	\$ 19.58	9.55	\$ 20.07	9.78
	12	\$ 1.92	\$ 17.74	9.23	\$ 18.99	9.89
2016	1	\$ 2.21	\$ 18.96	8.58	\$ 19.85	8.98
	2	\$ 1.89	\$ 15.54	8.22	\$ 16.00	8.46
	3	\$ 1.67	\$ 20.30	12.13	\$ 18.18	10.86
	4	\$ 1.86	\$ 19.98	10.73	\$ 20.34	10.92
	5	\$ 1.85	\$ 19.52	10.52	\$ 20.28	10.93
	6	\$ 2.46	\$ 26.23	10.69	\$ 28.27	11.51
	7	\$ 2.71	\$ 28.06	10.36	\$ 30.31	11.19
	8	\$ 2.73	\$ 33.47	12.24	\$ 35.17	12.86
	9	\$ 2.93	\$ 31.20	10.66	\$ 29.90	10.21
	10	\$ 3.08	\$ 26.58	8.63	\$ 29.07	9.44
	11	\$ 2.47	\$ 23.06	9.34	\$ 20.60	8.34
	12	\$ -	\$ -	-	\$ -	-

[Home <<](#)

[previous <<](#)

[next >>](#)

[chart](#)

Load Zone Monthly Implied Heat Rate - DA vs. RT									
year	month	HRdam_Houston	HRdam_South	HRdam_North	HRdam_West	HRrtm_Houston	HRrtm_South	HRrtm_North	HRrtm_West
2015	1	8.84	9.11	8.91	9.47	8.32	9.01	8.28	8.65
	2	9.41	10.02	9.58	9.75	10.03	11.05	10.47	10.96
	3	9.99	10.60	10.42	10.30	10.18	10.73	11.32	10.77
	4	9.84	10.12	9.59	10.31	9.60	9.96	9.40	9.91
	5	9.19	9.32	9.05	9.70	12.45	10.99	9.83	11.16
	6	9.89	10.69	9.70	10.78	8.73	9.31	9.00	10.11
	7	11.78	11.77	11.61	12.51	10.88	10.44	10.50	11.76
	8	20.80	20.17	20.21	19.29	14.08	13.70	14.09	13.55
	9	10.06	10.53	10.23	10.33	9.33	9.78	9.82	9.94
	10	10.02	10.16	9.50	9.49	8.99	10.38	8.99	8.80
	11	9.86	10.03	9.70	9.20	9.68	9.75	9.54	8.60
	12	10.47	10.01	9.49	9.51	10.67	9.32	8.36	8.46
2016	1	9.02	9.02	8.93	8.94	8.45	8.91	8.49	8.32
	2	8.41	8.62	8.49	8.08	8.04	8.41	8.38	7.59
	3	10.73	11.48	10.82	9.67	12.13	13.65	11.48	10.18
	4	10.95	11.39	10.93	9.43	10.92	10.63	11.20	8.71
	5	11.50	11.28	10.45	9.88	11.60	10.68	9.88	9.03
	6	13.50	11.44	10.44	10.02	13.08	9.95	9.81	9.18
	7	11.83	11.23	10.86	10.49	10.55	10.38	10.37	9.70
	8	13.78	12.84	12.45	11.72	13.52	11.92	11.85	10.84
	9	10.68	10.36	9.89	9.54	12.14	10.25	10.06	9.68
	10	10.11	10.02	8.67	8.50	8.86	9.02	8.16	8.56
	11	8.63	8.74	7.90	7.95	8.87	10.21	7.95	8.40
	12	-	-	-	-	-	-	-	-

[Home <<](#)

[previous <<](#)

[next >>](#)

[chart](#)

Daily ORDC Adders Average Values and Interval Duration								
YEAR	MONTH	DAY	PRICE_RS	PRICE_RDP	RS_CNT	RDP_CNT	RS_POS	RDP_POS
2016	11	1	\$ 0.10	\$ -	24	0	80	90
2016	11	2	\$ 0.01	\$ -	2	0	80	90
2016	11	3	\$ 0.38	\$ -	20	0	80	90
2016	11	4	\$ 0.06	\$ -	24	0	80	90
2016	11	5	\$ -	\$ -	0	0	80	90
2016	11	6	\$ -	\$ -	0	0	80	90
2016	11	7	\$ 0.15	\$ -	24	0	80	90
2016	11	8	\$ -	\$ -	0	0	80	90
2016	11	9	\$ -	\$ -	0	0	80	90
2016	11	10	\$ -	\$ -	0	0	80	90
2016	11	11	\$ -	\$ -	0	0	80	90
2016	11	12	\$ -	\$ -	0	0	80	90
2016	11	13	\$ -	\$ -	0	0	80	90
2016	11	14	\$ 0.06	\$ -	12	0	80	90
2016	11	15	\$ 0.02	\$ -	7	0	80	90
2016	11	16	\$ -	\$ -	0	0	80	90
2016	11	17	\$ -	\$ -	0	0	80	90
2016	11	18	\$ -	\$ -	0	0	80	90
2016	11	19	\$ -	\$ -	0	0	80	90
2016	11	20	\$ -	\$ -	0	0	80	90
2016	11	21	\$ -	\$ -	0	0	80	90
2016	11	22	\$ -	\$ -	0	0	80	90
2016	11	23	\$ 0.18	\$ -	38	0	80	90
2016	11	24	\$ -	\$ -	0	0	80	90
2016	11	25	\$ -	\$ -	0	0	80	90
2016	11	26	\$ -	\$ -	0	0	80	90
2016	11	27	\$ -	\$ -	0	0	80	90
2016	11	28	\$ -	\$ -	0	0	80	90
2016	11	29	\$ 0.41	\$ -	18	0	80	90
2016	11	30	\$ -	\$ -	0	0	80	90
0	0	0	\$ -	\$ -	0	0	0	0

[Home <<](#)

[previous <<](#)

[next >>](#)

[chart](#)

Monthly Average of Ancillary Services Required MW					
year	month	ASMW_REGDN	ASMW_NSPIN	ASMW_RRS	ASMW_REGUP
2015	1	379	1,500	2,800	416
	2	370	1,500	2,800	425
	3	393	1,500	2,800	449
	4	396	1,500	2,800	450
	5	409	1,464	2,800	446
	6	458	1,915	2,616	483
	7	450	1,828	2,817	473
	8	422	1,897	2,579	437
	9	446	1,545	2,607	458
	10	424	1,768	2,817	435
	11	394	1,951	2,927	423
	12	371	1,949	2,840	400
2016	1	288	1,568	2,752	314
	2	289	1,882	2,872	318
	3	279	1,787	2,872	313
	4	296	1,503	2,835	330
	5	315	1,554	2,817	339
	6	331	1,547	2,608	347
	7	324	1,358	2,577	354
	8	326	1,283	2,537	353
	9	319	1,500	2,598	346
	10	312	1,529	2,735	319
	11	260	1,742	2,872	284
	12	-	-	-	-

[Home <<](#)

[previous <<](#)

[next >>](#)

[chart](#)

Hourly Average of Ancillary Services Required MW

year	DELIVERY_HOUR	ASMW_REGDN	ASMW_NSPIN	ASMW_RRS	ASMW_REGUP
2015	1	449	1,592	2,826	463
	2	372	1,596	2,826	336
	3	318	1,680	2,872	314
	4	308	1,680	2,872	316
	5	363	1,680	2,872	367
	6	574	1,680	2,872	549
	7	432	1,696	2,793	766
	8	365	1,696	2,793	441
	9	369	1,696	2,793	472
	10	411	1,696	2,793	464
	11	408	1,701	2,709	498
	12	380	1,701	2,709	478
	13	356	1,701	2,709	428
	14	357	1,701	2,709	412
	15	343	1,746	2,693	369
	16	325	1,746	2,693	355
	17	338	1,746	2,693	362
	18	371	1,746	2,693	445
	19	461	1,747	2,709	452
	20	422	1,747	2,709	423
	21	415	1,747	2,709	391
	22	542	1,747	2,706	434
	23	602	1,596	2,826	547
	24	544	1,596	2,826	505
2016	1	367	942	2,855	331
	2	281	942	2,855	251
	3	242	1,490	2,854	229
	4	213	1,490	2,855	223
	5	238	1,490	2,855	275
	6	366	1,490	2,855	438
	7	299	1,993	2,707	588
	8	264	1,993	2,707	352
	9	266	1,993	2,707	395
	10	292	1,993	2,707	368
	11	276	2,022	2,642	386
	12	266	2,022	2,642	361
	13	246	2,022	2,642	326
	14	247	2,022	2,642	304
	15	242	1,479	2,673	269
	16	235	1,479	2,673	250
	17	242	1,479	2,673	267
	18	283	1,479	2,673	318
	19	349	1,473	2,668	314
	20	333	1,473	2,668	309
	21	343	1,473	2,668	278
	22	442	1,473	2,668	325
	23	507	942	2,855	381
	24	450	942	2,855	354

[Home <<](#)

[previous <<](#)

[next >>](#)

[chart](#)

Monthly Average Ancillary Services Price					
year	month	MCPC_REGDN	MCPC_NSPIN	MCPC_RRS	MCPC_REGUP
2015	1	\$ 5.49	\$ 1.84	\$ 6.47	\$ 7.10
	2	\$ 4.05	\$ 3.00	\$ 7.77	\$ 8.83
	3	\$ 6.04	\$ 6.26	\$ 11.27	\$ 12.39
	4	\$ 8.47	\$ 5.27	\$ 11.21	\$ 13.08
	5	\$ 7.78	\$ 4.63	\$ 8.84	\$ 8.58
	6	\$ 5.63	\$ 5.98	\$ 7.56	\$ 6.65
	7	\$ 4.01	\$ 8.69	\$ 12.37	\$ 10.00
	8	\$ 3.67	\$ 25.73	\$ 25.98	\$ 22.70
	9	\$ 4.25	\$ 2.70	\$ 7.13	\$ 6.93
	10	\$ 8.90	\$ 5.34	\$ 9.76	\$ 9.15
	11	\$ 6.67	\$ 4.84	\$ 11.28	\$ 10.60
	12	\$ 7.33	\$ 4.59	\$ 10.97	\$ 11.12
2016	1	\$ 4.10	\$ 2.62	\$ 8.05	\$ 6.69
	2	\$ 7.21	\$ 4.77	\$ 12.91	\$ 7.80
	3	\$ 8.47	\$ 6.06	\$ 11.39	\$ 9.34
	4	\$ 9.23	\$ 4.07	\$ 13.20	\$ 9.48
	5	\$ 7.63	\$ 2.84	\$ 8.01	\$ 6.14
	6	\$ 4.43	\$ 3.02	\$ 8.05	\$ 5.89
	7	\$ 3.59	\$ 3.11	\$ 9.44	\$ 7.75
	8	\$ 4.27	\$ 7.13	\$ 12.75	\$ 10.49
	9	\$ 4.59	\$ 3.91	\$ 8.91	\$ 7.12
	10	\$ 10.06	\$ 3.02	\$ 12.21	\$ 10.42
	11	\$ 5.68	\$ 3.53	\$ 11.84	\$ 7.64
	12	\$ -	\$ -	\$ -	\$ -

[Home <<](#)

[previous <<](#)

[next >>](#)

[chart](#)

Monthly Average A/S Cost per MWh Load					
year	month	AScost_REGDN	AScost_NSPIIN	AScost_RRS	AScost_REGUP
2015	1	\$ 0.05	\$ 0.07	\$ 0.47	\$ 0.08
	2	\$ 0.04	\$ 0.12	\$ 0.58	\$ 0.10
	3	\$ 0.07	\$ 0.28	\$ 0.92	\$ 0.16
	4	\$ 0.10	\$ 0.23	\$ 0.92	\$ 0.17
	5	\$ 0.08	\$ 0.18	\$ 0.66	\$ 0.10
	6	\$ 0.06	\$ 0.25	\$ 0.44	\$ 0.07
	7	\$ 0.04	\$ 0.32	\$ 0.70	\$ 0.10
	8	\$ 0.03	\$ 0.98	\$ 1.35	\$ 0.20
	9	\$ 0.04	\$ 0.09	\$ 0.42	\$ 0.07
	10	\$ 0.10	\$ 0.26	\$ 0.74	\$ 0.11
	11	\$ 0.08	\$ 0.28	\$ 0.99	\$ 0.13
	12	\$ 0.08	\$ 0.26	\$ 0.90	\$ 0.13
2016	1	\$ 0.03	\$ 0.11	\$ 0.60	\$ 0.06
	2	\$ 0.06	\$ 0.26	\$ 1.09	\$ 0.07
	3	\$ 0.07	\$ 0.33	\$ 1.00	\$ 0.09
	4	\$ 0.08	\$ 0.18	\$ 1.07	\$ 0.09
	5	\$ 0.06	\$ 0.12	\$ 0.59	\$ 0.05
	6	\$ 0.03	\$ 0.10	\$ 0.45	\$ 0.04
	7	\$ 0.02	\$ 0.08	\$ 0.47	\$ 0.05
	8	\$ 0.03	\$ 0.19	\$ 0.66	\$ 0.08
	9	\$ 0.03	\$ 0.13	\$ 0.51	\$ 0.05
	10	\$ 0.08	\$ 0.12	\$ 0.85	\$ 0.08
	11	\$ 0.04	\$ 0.18	\$ 1.00	\$ 0.06
	12	\$ -	\$ -	\$ -	\$ -

[Home <<](#)

[previous <<](#)

[next >>](#)

[chart](#)

ERCOT-wide Cumulative PNM			
year	month	pnm	pnm_accum
2015	0	\$ -	\$ -
	1	\$ 1,009.59	\$ 1,009.59
	2	\$ 3,289.14	\$ 4,298.73
	3	\$ 3,800.40	\$ 8,099.13
	4	\$ 1,900.94	\$ 10,000.07
	5	\$ 4,578.64	\$ 14,578.71
	6	\$ 720.30	\$ 15,299.01
	7	\$ 2,945.67	\$ 18,244.68
	8	\$ 7,767.43	\$ 26,012.11
	9	\$ 1,612.54	\$ 27,624.65
	10	\$ 1,283.56	\$ 28,908.21
	11	\$ 1,529.59	\$ 30,437.80
12	\$ 1,209.77	\$ 31,647.57	
2016	0	\$ -	\$ -
	1	\$ 1,160.69	\$ 1,160.69
	2	\$ 720.57	\$ 1,881.26
	3	\$ 3,883.41	\$ 5,764.67
	4	\$ 2,389.99	\$ 8,154.66
	5	\$ 1,661.50	\$ 9,816.16
	6	\$ 1,922.76	\$ 11,738.92
	7	\$ 2,969.44	\$ 14,708.36
	8	\$ 5,321.18	\$ 20,029.54
	9	\$ 3,967.65	\$ 23,997.19
	10	\$ 1,824.61	\$ 25,821.80
	11	\$ 2,510.79	\$ 28,332.59
12	\$ -	\$ -	

[Home <<](#)

[previous <<](#)

[next >>](#)

[chart](#)

DA vs. RT Load Forecast Error by Hour Ending							
year	month	HE_1_4	HE_13_16	HE_17_20	HE_21_24	HE_5_8	HE_9_12
2015	1	336	(342)	(251)	93	137	75
	2	155	(718)	(639)	(325)	244	(334)
	3	(246)	(160)	(425)	(430)	(253)	(54)
	4	34	585	680	192	88	359
	5	18	330	761	350	(23)	114
	6	(219)	(317)	(166)	(338)	(167)	(364)
	7	(403)	490	587	126	(232)	136
	8	55	667	769	280	143	910
	9	(4)	130	81	114	129	171
	10	(78)	324	206	294	(161)	(13)
	11	(270)	(547)	(492)	(457)	(190)	(207)
	12	156	(270)	47	20	38	(128)
2016	1	455	14	371	163	473	142
	2	39	83	148	42	(36)	150
	3	31	288	300	89	(136)	(82)
	4	(271)	220	97	(82)	(320)	(147)
	5	(44)	460	285	117	(69)	163
	6	(488)	(261)	(356)	(518)	(348)	(451)
	7	(163)	507	735	306	(231)	240
	8	(578)	(65)	41	(258)	(741)	(717)
	9	(358)	305	319	87	(433)	(30)
	10	(312)	371	(41)	(310)	(475)	50
	11	(329.38)	(145.97)	239.85	(237.16)	(138.79)	(234.25)
	12	-	-	-	-	-	-

[Home <<](#)

[previous <<](#)

[next >>](#)

[chart](#)

Monthly Average of Wind Generation by Hour Ending							
year	month	HE_1_4	HE_13_16	HE_17_20	HE_21_24	HE_5_8	HE_9_12
2015	1	3,597	3,424	3,264	3,738	3,879	3,471
	2	5,036	3,927	3,961	5,045	4,476	3,988
	3	4,182	2,295	2,465	3,622	3,701	2,532
	4	6,218	4,090	5,011	6,002	5,105	4,209
	5	6,280	4,882	5,081	5,617	5,362	5,000
	6	5,457	3,335	4,120	5,036	4,199	3,209
	7	7,034	3,176	4,275	5,973	5,779	4,094
	8	5,692	2,309	3,357	5,275	4,380	2,803
	9	5,853	2,834	3,476	5,403	4,681	3,394
	10	5,574	3,631	3,871	5,329	4,899	3,913
	11	6,250	5,952	5,683	6,578	6,216	5,852
	12	6,634	5,535	5,484	6,817	6,494	5,481
2016	1	6,300	4,581	4,663	6,253	6,228	5,019
	2	7,602	5,772	5,779	7,573	7,552	6,109
	3	7,872	6,033	6,013	7,565	7,793	6,833
	4	7,356	5,020	5,488	6,921	6,559	5,437
	5	7,414	5,363	6,245	7,275	6,347	5,617
	6	5,963	3,648	4,840	5,845	4,816	3,741
	7	8,903	5,074	6,793	8,315	7,411	5,948
	8	5,644	3,670	4,814	5,613	4,238	3,529
	9	6,159	3,957	4,561	6,057	5,295	4,291
	10	8,472	4,634	5,455	8,674	7,449	5,548
	11	7,043	4,855	5,049	6,718	6,517	5,225
	12	-	-	-	-	-	-

[Home <<](#)

[previous <<](#)

[next >>](#)

[chart](#)

RT Congestion Constraint Rankings - Top 10 Constraints by Binding Frequency and Top 10 Constraints by Total Congestion Rent																
category	year	item	rankvar	rank	JAN	FEB	MAR	APR	MAY	JUN	JUL	AUG	SEP	OCT	NOV	DEC
FREQ_EXIST	2016	LISTON (LISTON)	8,325	1	518	862	690	442	479	532	2,220	1,235	241	120	986	-
FREQ_EXIST	2016	JAVALT_MOLINA_1 (JAVALTAP-MOLINA)	7,255	2	1,127	1,613	2,170	1,369	935	41	-	-	-	-	-	-
FREQ_EXIST	2016	JK_TOKSW_1 (TOKSW-JK_CK)	5,981	3	39	-	65	239	236	789	932	463	1,490	1,587	141	-
FREQ_EXIST	2016	38T365_1 (WIRTZ-FLATRO)	5,332	4	167	759	1,039	286	1,344	357	1,076	302	2	-	-	-
FREQ_EXIST	2016	PNHNDL (PNHNDL)	4,538	5	5	165	934	3	737	15	63	1	22	77	2,516	-
FREQ_EXIST	2016	1030_B (BOSQUESW-RGH)	4,262	6	100	248	612	467	424	209	164	-	-	774	1,264	-
FREQ_EXIST	2016	SNG-ZEN (SNG-ZEN)	3,577	7	-	-	54	-	212	427	844	470	791	661	118	-
FREQ_EXIST	2016	BRUNL_69_1 (BRUNL-BRUNI)	3,256	8	503	274	221	95	57	91	1,302	531	8	-	174	-
FREQ_EXIST	2016	ASPM_69T1 (ASPM-ASPM)	2,821	9	-	-	186	8	2,627	-	-	-	-	-	-	-
FREQ_EXIST	2016	RIOHND_ERIOHND_1 (MV_RIOHO-RIOHONDO)	2,314	10	736	1,495	-	7	-	40	-	-	-	36	-	-
TOP10_RENT	2016	MDO_AT1 (MDO-MDO)	\$ 47.86	1	\$ -	\$ -	\$ -	\$ -	\$ 14.49	\$ 33.47	\$ -	\$ -	\$ -	\$ -	\$ -	\$ -
TOP10_RENT	2016	SNG-ZEN (SNG-ZEN)	\$ 47.11	2	\$ -	\$ -	\$ 0.06	\$ -	\$ 2.54	\$ 2.44	\$ 5.33	\$ 15.97	\$ 15.40	\$ 5.23	\$ 0.12	\$ -
TOP10_RENT	2016	FTW_W_DE_1 (W_DENT-FTWORTH)	\$ 29.84	3	\$ -	\$ -	\$ -	\$ 10.03	\$ 5.46	\$ 1.70	\$ 1.09	\$ 9.87	\$ 1.59	\$ 0.10	\$ -	\$ -
TOP10_RENT	2016	LOMA_A_L_FRES1_1 (L_FRESNO-LOMA_ALT)	\$ 26.95	4	\$ 6.90	\$ 4.08	\$ 11.39	\$ 3.65	\$ -	\$ -	\$ 0.92	\$ -	\$ -	\$ -	\$ -	\$ -
TOP10_RENT	2016	PNHNDL (PNHNDL)	\$ 26.32	5	\$ 0.01	\$ 0.31	\$ 4.26	\$ 0.01	\$ 3.29	\$ 0.05	\$ 0.17	\$ 0.00	\$ 0.11	\$ 0.28	\$ 17.82	\$ -
TOP10_RENT	2016	JK_TOKSW_1 (TOKSW-JK_CK)	\$ 15.06	6	\$ 0.06	\$ -	\$ 0.05	\$ 0.63	\$ 0.82	\$ 4.96	\$ 1.50	\$ 1.80	\$ 2.36	\$ 2.80	\$ 0.08	\$ -
TOP10_RENT	2016	6265_D (MRSDO-RHTP2)	\$ 15.05	7	\$ -	\$ 1.58	\$ 5.86	\$ 7.14	\$ -	\$ 0.46	\$ -	\$ -	\$ -	\$ -	\$ -	\$ -
TOP10_RENT	2016	6265_A (EMSES-MRSDO)	\$ 10.92	8	\$ 0.00	\$ 4.43	\$ 4.75	\$ 1.24	\$ -	\$ 0.07	\$ -	\$ -	\$ -	\$ 0.43	\$ -	\$ -
TOP10_RENT	2016	AIR_W_DE_1 (W_DENT-JMCRSTL)	\$ 10.85	9	\$ -	\$ -	\$ -	\$ -	\$ -	\$ 2.61	\$ 1.03	\$ 2.31	\$ 4.49	\$ 0.42	\$ -	\$ -
TOP10_RENT	2016	EMSES_AX2 (EMSES-EMSES)	\$ 9.91	10	\$ -	\$ -	\$ -	\$ 7.86	\$ -	\$ -	\$ 2.05	\$ -	\$ -	\$ -	\$ -	\$ -

[Home <<](#)

[previous <<](#)

[next >>](#)

[chart 1](#)

[chart 2](#)

DA Congestion Constraint Rankings - Top 10 Constraints by Binding Frequency and Top 10 Constraints by Total Congestion Rent																
category	year	item	rankvar	rank	JAN	FEB	MAR	APR	MAY	JUN	JUL	AUG	SEP	OCT	NOV	DEC
FREQ_EXIST	2016	38T365_1 (WIRTZ-FLATRO)	3,561	1	88	286	502	284	591	603	623	359	212	11	2	-
FREQ_EXIST	2016	EAGLEP_ESCOND1_1 (ESCONDID-EAGLE PS)	2,329	2	-	122	73	30	84	384	544	396	261	332	103	-
FREQ_EXIST	2016	JAVALT_MOLINA1_1 (JAVALTAP-MOLINA)	2,034	3	308	496	523	345	351	11	-	-	-	-	-	-
FREQ_EXIST	2016	BRUNI_69_1 (BRUNI-BRUNI)	1,893	4	144	375	277	109	151	60	342	221	100	12	102	-
FREQ_EXIST	2016	LISTON (LISTON)	1,840	5	132	297	208	153	106	21	425	263	103	15	117	-
FREQ_EXIST	2016	ASHERT_CATAR1_1 (ASHERTON-CATARINA)	1,726	6	32	135	52	98	67	116	254	178	265	341	188	-
FREQ_EXIST	2016	DIL_COTU_1 (DILLEYSW-COTULAS)	1,638	7	-	-	3	1	-	27	290	225	366	439	287	-
FREQ_EXIST	2016	1030_B (BOSQUESW-RGH)	1,632	8	25	56	225	156	310	323	87	18	-	144	288	-
FREQ_EXIST	2016	HEXT_YELWJC1_1 (YELWJCKT-HEXT)	1,547	9	70	66	39	262	59	13	107	112	165	353	301	-
FREQ_EXIST	2016	LOMA_A_L_FRES1_1 (L_FRESNO-LOMA_ALT)	1,404	10	377	389	391	241	-	-	6	-	-	-	-	-
TOP10_RENT	2016	MDO_AT1 (MDO-MDO)	\$ 37.94	1	\$ 0.00	\$ -	\$ 0.58	\$ 0.75	\$ 6.62	\$ 28.57	\$ 0.81	\$ 0.01	\$ 0.28	\$ 0.07	\$ 0.25	\$ -
TOP10_RENT	2016	SNG-ZEN (SNG-ZEN)	\$ 33.59	2	\$ -	\$ 0.01	\$ 0.02	\$ 0.14	\$ 2.62	\$ 2.18	\$ 8.31	\$ 9.36	\$ 5.92	\$ 3.37	\$ 1.66	\$ -
TOP10_RENT	2016	LOMA_A_L_FRES1_1 (L_FRESNO-LOMA_ALT)	\$ 17.94	3	\$ 1.18	\$ 2.40	\$ 9.71	\$ 4.53	\$ -	\$ -	\$ 0.11	\$ -	\$ -	\$ -	\$ -	\$ -
TOP10_RENT	2016	PNHNDL (PNHNDL)	\$ 16.21	4	\$ 0.00	\$ 0.25	\$ 1.63	\$ 0.05	\$ 1.47	\$ 0.70	\$ 0.18	\$ 0.03	\$ 0.12	\$ 0.37	\$ 11.40	\$ -
TOP10_RENT	2016	FTW_W_DE_1 (W_DENT-FTWORTH)	\$ 14.86	5	\$ -	\$ 0.08	\$ 0.15	\$ 4.72	\$ 4.16	\$ 0.10	\$ 1.06	\$ 1.72	\$ 1.00	\$ 1.88	\$ -	\$ -
TOP10_RENT	2016	JEWET-SNG (JEWET-SNG)	\$ 13.99	6	\$ 0.86	\$ 0.39	\$ 0.11	\$ 0.51	\$ 0.05	\$ 0.82	\$ 0.02	\$ 0.18	\$ 0.65	\$ 8.55	\$ 1.83	\$ -
TOP10_RENT	2016	JK_TOKSW_1 (TOKSW-JK CK)	\$ 12.91	7	\$ 0.05	\$ -	\$ 0.58	\$ 0.58	\$ 0.84	\$ 4.45	\$ 1.69	\$ 0.74	\$ 0.71	\$ 2.02	\$ 1.25	\$ -
TOP10_RENT	2016	VALIMP (VALIMP)	\$ 11.93	8	\$ -	\$ 0.04	\$ 0.20	\$ 0.16	\$ 2.78	\$ 4.71	\$ 0.01	\$ 0.04	\$ 0.58	\$ 3.31	\$ 0.10	\$ -
TOP10_RENT	2016	AIR_W_DE_1 (W_DENT-JMCRSTL)	\$ 11.52	9	\$ -	\$ -	\$ -	\$ -	\$ 0.01	\$ 1.41	\$ 4.91	\$ 2.70	\$ 1.30	\$ 1.21	\$ -	\$ -
TOP10_RENT	2016	BETHK_66_A (HK-BET)	\$ 11.49	10	\$ -	\$ 0.00	\$ 0.00	\$ 0.91	\$ 0.01	\$ 1.36	\$ 2.20	\$ 4.31	\$ 2.24	\$ 0.39	\$ 0.08	\$ -

[Home <<](#)

[previous <<](#)

[next >>](#)

[chart 1](#)

[chart 2](#)

Top 10 CRR Pairs Ranked by Monthly Auction Values - Top 10 PTP Obligations by Total Transaction Values and Top 10 PTP Options by Total Transaction Values																	
fr_option	year	pair	total_value	rank	JAN	FEB	MAR	APR	MAY	JUN	JUL	AUG	SEP	OCT	NOV	DEC	
N	2016	HB NORTH-HB HOUSTON	\$ 14.17	1	\$ 0.02	\$ 0.08	\$ 0.78	\$ 0.85	\$ 1.48	\$ 1.81	\$ 1.31	\$ 1.81	\$ 1.66	\$ 2.19	\$ 1.67	\$ 0.51	
N	2016	HB SOUTH-LZ SOUTH	\$ 8.18	2	\$ 0.76	\$ 0.64	\$ 0.80	\$ 0.72	\$ 0.76	\$ 0.69	\$ 0.60	\$ 0.62	\$ 0.96	\$ 0.49	\$ 0.59	\$ 0.55	
N	2016	HB NORTH-LZ NORTH	\$ 7.05	3	\$ 0.24	\$ 0.21	\$ 0.15	\$ 0.43	\$ 0.83	\$ 0.89	\$ 0.77	\$ 1.04	\$ 0.86	\$ 0.61	\$ 0.59	\$ 0.41	
N	2016	HB HOUSTON-LZ HOUSTON	\$ 4.24	4	\$ 0.12	\$ 0.08	\$ 0.08	\$ 0.11	\$ 0.28	\$ 0.51	\$ 0.64	\$ 0.91	\$ 0.68	\$ 0.49	\$ 0.19	\$ 0.16	
N	2016	HB WEST-HB NORTH	\$ 3.70	5	\$ 0.01	\$ 0.00	\$ 0.27	\$ 0.45	\$ 1.15	\$ 0.63	\$ 0.02	\$ 0.02	\$ 0.02	\$ 0.39	\$ 0.69	\$ 0.06	
N	2016	HB NORTH-HB SOUTH	\$ 3.64	6	\$ 0.03	\$ 0.05	\$ 0.12	\$ 0.28	\$ 0.47	\$ 0.33	\$ 0.14	\$ 0.74	\$ 0.39	\$ 0.48	\$ 0.40	\$ 0.21	
N	2016	HB WEST-LZ WEST	\$ 2.71	7	\$ 0.29	\$ 0.23	\$ 0.13	\$ 0.11	\$ 0.24	\$ 0.56	\$ 0.29	\$ 0.25	\$ 0.15	\$ 0.13	\$ 0.17	\$ 0.16	
N	2016	CPSES_UNIT2-HB NORTH	\$ 1.05	8	\$ 0.01	\$ 0.01	\$ 0.04	\$ 0.18	\$ 0.17	\$ 0.04	\$ 0.01	\$ 0.02	\$ 0.10	\$ 0.14	\$ 0.20	\$ 0.13	
N	2016	CPSES_UNIT1-HB NORTH	\$ 0.81	9	\$ 0.01	\$ 0.01	\$ 0.03	\$ 0.22	\$ 0.17	\$ 0.05	\$ 0.00	\$ 0.01	\$ 0.03	\$ 0.09	\$ 0.10	\$ 0.09	
N	2016	JCKCNTY2_ST2-LZ NORTH	\$ 0.59	10	\$ 0.02	\$ 0.02	\$ 0.01	\$ -	\$ 0.07	\$ 0.14	\$ 0.06	\$ 0.08	\$ 0.10	\$ 0.07	\$ -	\$ 0.02	
Y	2016	HB NORTH-LZ NORTH	\$ 3.44	1	\$ 0.27	\$ 0.25	\$ 0.09	\$ 0.16	\$ 0.27	\$ 0.41	\$ 0.37	\$ 0.53	\$ 0.40	\$ 0.23	\$ 0.24	\$ 0.23	
Y	2016	HB SOUTH-LZ SOUTH	\$ 2.28	2	\$ 0.21	\$ 0.15	\$ 0.13	\$ 0.30	\$ 0.38	\$ 0.20	\$ 0.23	\$ 0.22	\$ 0.17	\$ 0.12	\$ 0.10	\$ 0.07	
Y	2016	HB HOUSTON-LZ HOUSTON	\$ 1.82	3	\$ 0.06	\$ 0.05	\$ 0.09	\$ 0.13	\$ 0.11	\$ 0.18	\$ 0.23	\$ 0.35	\$ 0.32	\$ 0.19	\$ 0.06	\$ 0.06	
Y	2016	HB WEST-HB NORTH	\$ 1.36	4	\$ 0.07	\$ 0.14	\$ 0.16	\$ 0.16	\$ 0.13	\$ 0.42	\$ 0.10	\$ 0.06	\$ 0.11	\$ 0.00	\$ 0.01	\$ 0.00	
Y	2016	HB WEST-LZ WEST	\$ 1.23	5	\$ 0.21	\$ 0.17	\$ 0.14	\$ 0.11	\$ 0.09	\$ 0.08	\$ 0.10	\$ 0.06	\$ 0.07	\$ 0.07	\$ 0.07	\$ 0.04	
Y	2016	STP_STP_G1-LZ CPS	\$ 0.92	6	\$ 0.06	\$ 0.10	\$ 0.05	\$ 0.01	\$ 0.05	\$ 0.07	\$ 0.01	\$ 0.05	\$ 0.39	\$ 0.08	\$ 0.04	\$ 0.00	
Y	2016	STP_STP_G2-LZ CPS	\$ 0.81	7	\$ 0.06	\$ 0.10	\$ 0.05	\$ 0.01	\$ 0.05	\$ 0.07	\$ 0.01	\$ 0.04	\$ 0.38	\$ 0.03	\$ 0.01	\$ 0.00	
Y	2016	SAN_SANMIGG1-LZ SOUTH	\$ 0.65	8	\$ 0.11	\$ 0.16	\$ 0.05	\$ 0.05	\$ 0.09	\$ 0.10	\$ 0.02	\$ 0.02	\$ 0.01	\$ 0.03	\$ 0.00	\$ -	
Y	2016	BORDAS_ALL-LZ SOUTH	\$ 0.51	9	\$ 0.04	\$ 0.03	\$ 0.10	\$ 0.12	\$ 0.15	\$ 0.06	\$ 0.01	\$ -	\$ -	\$ -	\$ -	\$ -	
Y	2016	HB NORTH-HB HOUSTON	\$ 0.47	10	\$ 0.02	\$ 0.04	\$ 0.08	\$ 0.01	\$ 0.06	\$ 0.01	\$ 0.04	\$ 0.08	\$ 0.00	\$ 0.05	\$ 0.03	\$ 0.04	

[Home <<](#)

[previous <<](#)

[chart 1](#)

[chart 2](#)